

EYPA Charts

Aerodrome Chart

Aerodrome Ground Movement and Parking Chart

Aerodrome Obstacle Chart (Type A)

Standard Departure Chart - Instrument (SID) - ICAO RWY 01

Standard Departure Chart - Instrument (SID) - ICAO RWY 19

RNAV 1 (GNSS) Standard Departure Chart - Instrument (SID) - ICAO RWY 01

RNAV 1 (GNSS) Standard Departure Chart - Instrument (SID) - ICAO RWY 19

RNAV 1 (GNSS) Standard Arrival Chart - Instrument (STAR) - ICAO RWY 01

RNAV 1 (GNSS) Standard Arrival Chart - Instrument (STAR) - ICAO RWY 19

ATC Surveillance Minimum Altitude Chart

Instrument Approach Chart - ICAO ILS or LOC RWY 19

Instrument Approach Chart - ICAO RNP RWY 01 (CAT A/B/C/D)

Instrument Approach Chart - ICAO RNP (LNAV only) RWY 19

Instrument Approach Chart - ICAO NDB Z RWY 01 (CAT A/B)

Instrument Approach Chart - ICAO NDB Y RWY 01 (CAT C/D)

Instrument Approach Chart - ICAO NDB Z RWY 19 (CAT A/B)

Instrument Approach Chart - ICAO NDB Y RWY 19 (CAT C/D)

Visual Approach Chart - ICAO RWY 01/19

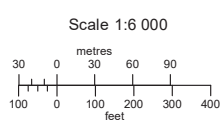
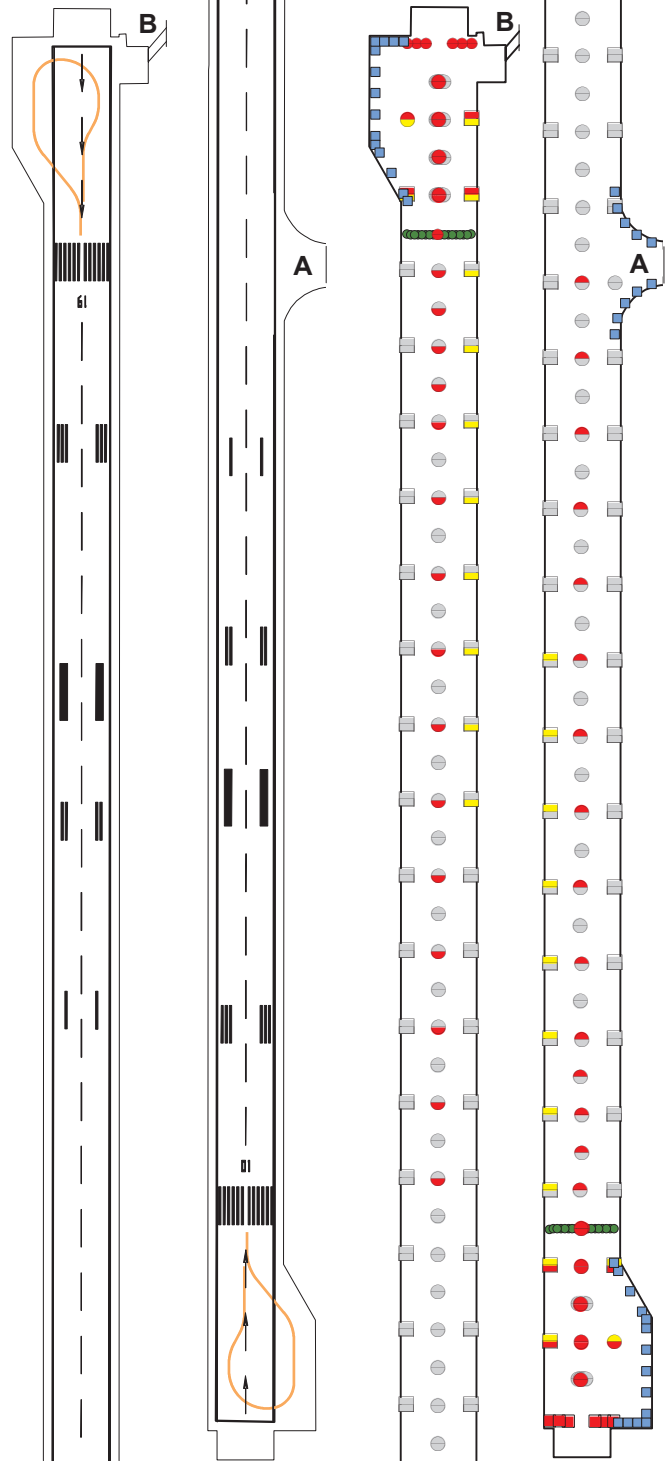
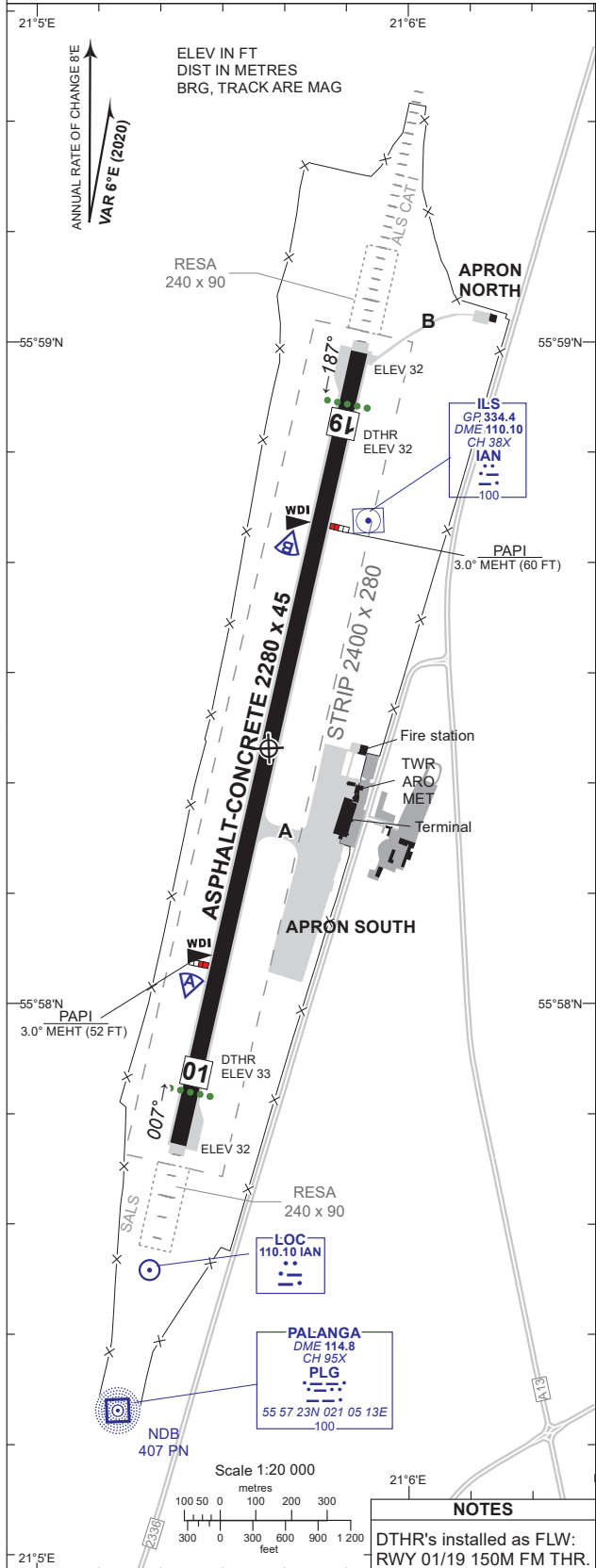
AERODROME CHART - ICAO

AERODROME ELEV 33

55° 58' 23" N
021° 05' 38" E

TWR 124.305
ATIS 127.805

PALANGA



RWY	TRUE DIRECTION	THR	DTHR	BEARING STRENGTH
01	012.73°	55 57 47N 021 05 23E	55 57 52N 021 05 25E	120/F/A/W/T
19	192.73°	55 58 59N 021 05 52E	55 58 54N 021 05 50E	

Changes: marking and lighting aids; turnaround; APCH LGT type RWY 19; ARP coordinates; THR 01 ELEV; RWY 19 TRUE direction; RWY bearing strength; RESA dimensions.

THIS PAGE INTENTIONALLY LEFT BLANK

AERODROME GROUND MOVEMENT CHART - ICAO

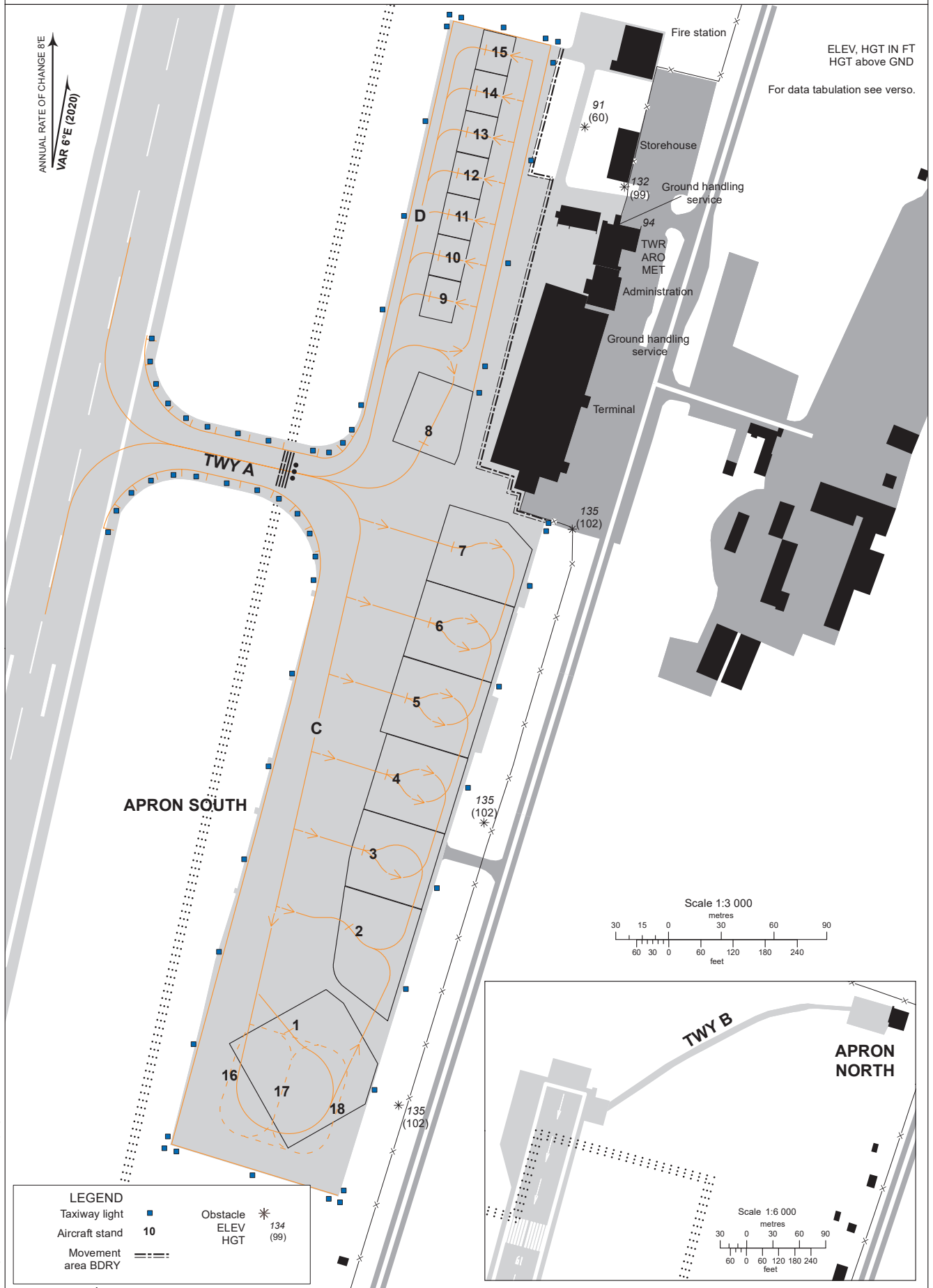
APRON ELEV 33

TWR 124.305
ATIS 127.805

PALANGA

ANNUAL RATE OF CHANGE 8'E
VAR 6'E (2020)

ELEV, HGT IN FT
HGT above GND
For data tabulation see verso.



Changes: ACFT stands; taxiway lights.

AERONAUTICAL DATA TABULATION

ACFT STANDS

Stand	Coordinates		Bearing Strength	Stand	Coordinates		Bearing Strength
1	55 58 04.97N	021 05 41.51E	95/R/A/W/T	10	55 58 19.24N	021 05 46.43E	107/F/A/Y/T
2	55 58 06.88N	021 05 43.48E	95/R/A/W/T	11	55 58 19.99N	021 05 46.74E	57/F/A/Y/T
3	55 58 08.29N	021 05 43.94E	120/F/A/X/T	12	55 58 20.75N	021 05 47.04E	48/F/A/Y/T
4	55 58 09.68N	021 05 44.71E	120/F/A/X/T	13	55 58 21.51N	021 05 47.35E	49/F/A/Y/T
5	55 58 11.09N	021 05 45.36E	120/F/A/X/T	14	55 58 22.26N	021 05 47.65E	43/F/A/Y/T
6	55 58 12.48N	021 05 46.12E	120/F/A/X/T	15	55 58 23.02N	021 05 47.96E	46/F/A/Y/T
7	55 58 13.88N	021 05 46.88E	120/F/A/X/T	16	55 58 04.16N	021 05 39.57E	95/R/A/W/T
8	55 58 15.78N	021 05 45.92E	120/F/A/X/T	17	55 58 03.86N	021 05 41.27E	95/R/A/W/T
9	55 58 18.48N	021 05 46.13E	120/F/A/Y/T	18	55 58 03.55N	021 05 43.09E	95/R/A/W/T

Note: coordinates of the stop position of the nose landing gear.

TAXIWAYS

TWY	Width (M)	Bearing Strength	Surface	Centre Line Points	
A	23	120/F/A/W/T	Asphalt-Concrete	55 58 12.64N	021 05 33.51E
				55 58 14.53N	021 05 34.27E
				55 58 15.54N	021 05 35.54E
				55 58 15.75N	021 05 37.71E
				55 58 15.25N	021 05 41.60E
				55 58 15.14N	021 05 42.50E
				55 58 14.71N	021 05 43.58E
				55 58 13.98N	021 05 43.81E
				55 58 15.92N	021 05 44.17E
				55 58 15.32N	021 05 43.41E
				55 58 15.19N	021 05 42.11E
				55 58 16.46N	021 05 35.91E
				55 58 17.68N	021 05 35.54E
55 58 19.57N	021 05 36.30E				
B	7,5	5700 MTOM (kg)	Grass	NIL	

TAXIING ROUTES

Route	Description	Max wing span, M
C	From end of TWY A to ACFT stand 1	52
D	From end of TWY A to ACFT stand 8	25
	From ACFT stand 8 to ACFT stand 15	18

NOTES

- Aircraft movement to parking stand will be guided by marshalls.
- Taxiing to aircraft stands 1-2 is possible via stand 1 from taxiing route C only.
- Taxiing to aircraft stands 3-7 is possible via next free parking stand, parking direction must be to the west only.
- Taxiing to aircraft stand 8 is performed only from taxiing route D, parking direction must be to the south.
- Stand 1 is used for aircraft with wingspan up to 52 M.
- Stands 2-7 are used for aircraft with wingspan up to 36 M.
- Stand 8 is used for aircraft with wingspan up to 25 M.
- Stand number for arriving aircraft will be allocated by TWR.
- Testing of aircraft engines in exceptional cases can be performed at ACFT stand 1.
- General Aviation aircraft will have to use the General Aviation Parking stands 9-15.
- Taxiing to aircraft stands 9-15 along the guide line, parking direction must be to the west only.
- Stands 9-15 are used for aircraft with wingspan up to 18 M.
- For helicopters parking ACFT stands 1-7 are used.

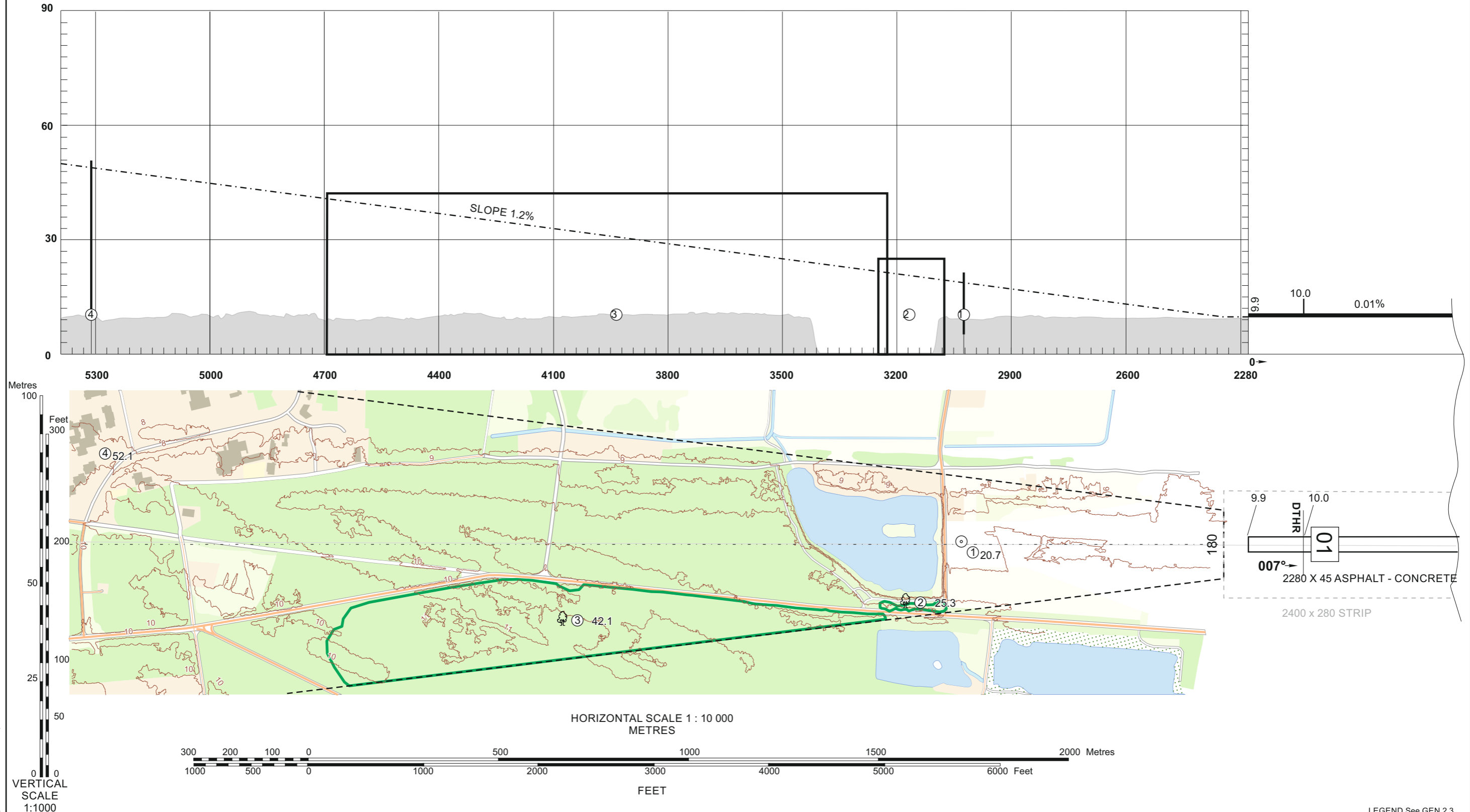
Changes: ACFT stands; TWY centre line points and bearing strength; taxiing routes; notes.

AERODROME OBSTACLE CHART - ICAO TYPE A (OPERATING LIMITATIONS)

**PALANGA
RWY 01**

MAGNETIC VARIATION 6° E - 2020
DIMENSIONS AND ELEVATIONS IN METRES
ORDER OF ACCURACY
HORIZONTAL 0.5M
VERTICAL 0.1M

DECLARED DISTANCES	
2280	TAKE - OFF RUN AVAILABLE
2280	TAKE - OFF DISTANCE AVAILABLE
2280	ACCELERATE STOP DISTANCE AVAILABLE
2130	LANDING DISTANCE AVAILABLE



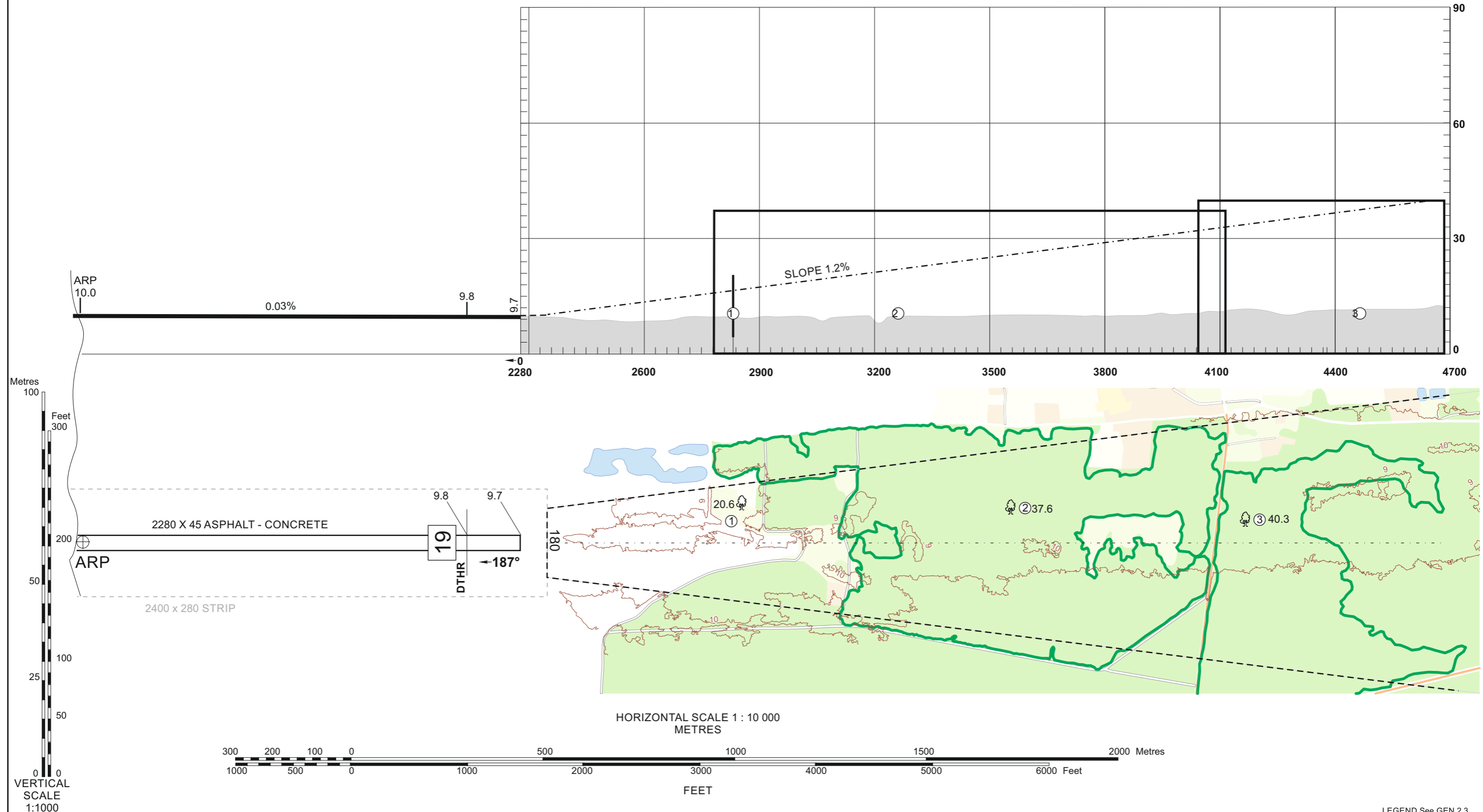
Changes: Horizontal accuracy.

AERODROME OBSTACLE CHART - ICAO TYPE A (OPERATING LIMITATIONS)

**PALANGA
RWY 19**

MAGNETIC VARIATION 6° E - 2020
DIMENSIONS AND ELEVATIONS IN METRES
ORDER OF ACCURACY
HORIZONTAL 0.5M
VERTICAL 0.1M

DECLARED DISTANCES	
2280	TAKE - OFF RUN AVAILABLE
2280	TAKE - OFF DISTANCE AVAILABLE
2280	ACCELERATE STOP DISTANCE AVAILABLE
2130	LANDING DISTANCE AVAILABLE



LEGEND See GEN 2.3

STANDARD DEPARTURE CHART
INSTRUMENT (SID) - ICAO
TRANSITION ALT 5000

TWR 124.305
ATIS 127.805

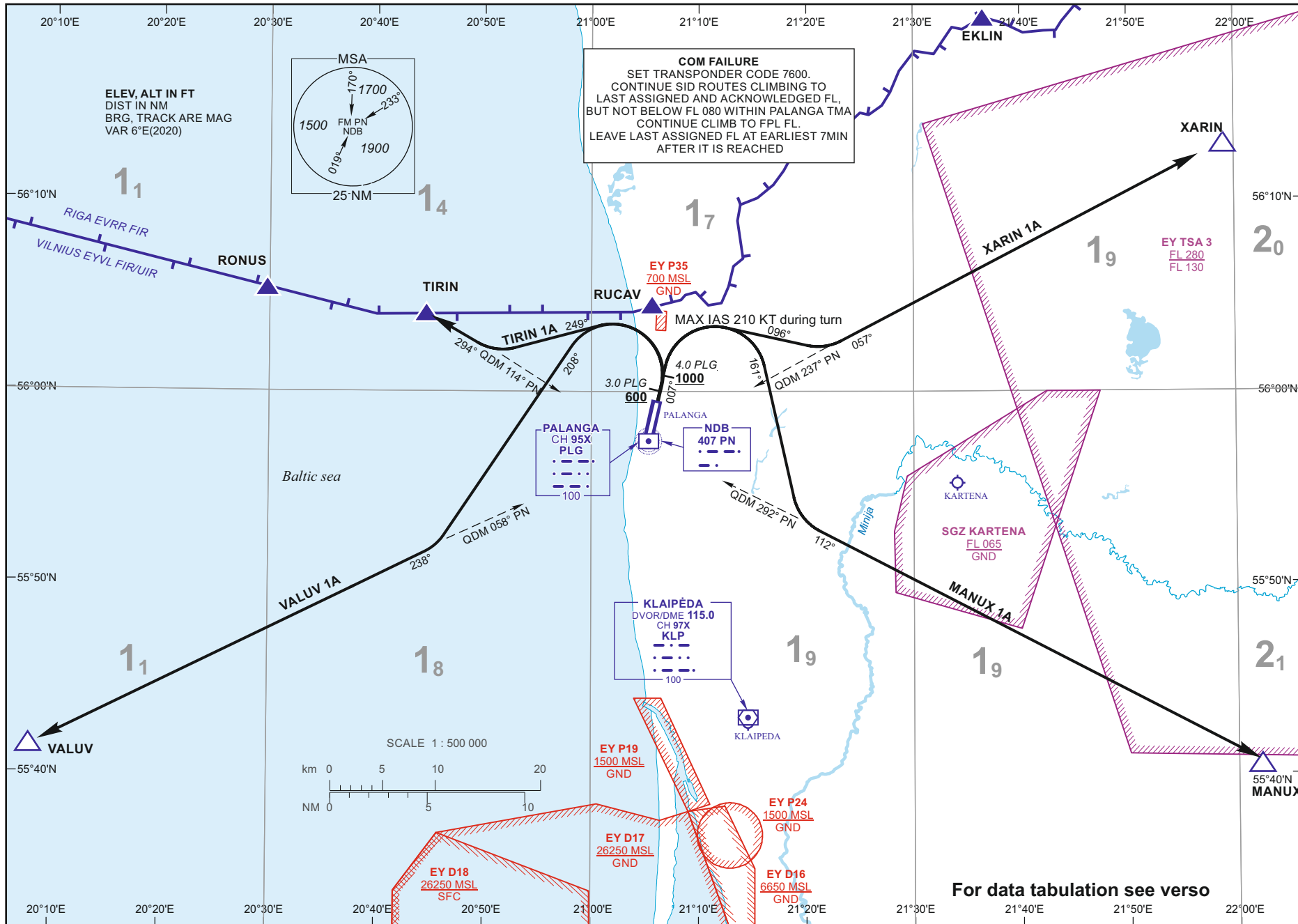
PALANGA
RWY 01
MANUX 1A, TIRIN 1A,
VALUV 1A, XARIN 1A

Changes: VAR and date of VAR; MAG courses; MSA; lateral limits of SGZ Kartena.

12 AUG 2021

©2019 ORO NAVIGACIJA

AIRAC AMDT 003/2021



PALANGA
RWY 01
MANUX 1A, TIRIN 1A,
VALUV 1A, XARIN 1A

**PALANGA
SID RWY 01**

TABULAR DESCRIPTION

STANDARD INSTRUMENT DEPARTURE (SID) ROUTES

SID NAME	ROUTE
MANUX 1A	Climb on RWY track to 4.0 DME PLG (at 1000 FT MSL or above). Turn right (MAX IAS 210 KT) to track 161°. Intercept QDM 292° PN, proceed to MANUX.
TIRIN 1A	Climb on RWY track to 3.0 DME PLG (at 600 FT MSL or above). Turn left (MAX IAS 210 KT) to track 249°. Intercept QDM 114° PN, proceed to TIRIN.
VALUV 1A	Climb on RWY track to 3.0 DME PLG (at 600 FT MSL or above). Turn left (MAX IAS 210 KT) to track 208°. Intercept QDM 058° PN, proceed to VALUV.
XARIN 1A	Climb on RWY track to 4.0 DME PLG (at 1000 FT MSL or above). Turn right (MAX IAS 210 KT) to track 096°. Intercept QDM 237° PN, proceed to XARIN.

Remark: 1. After take-off climb to 4000 FT MSL. Unless otherwise specified by ATC.
2. PDG: 6.6%(400 FT/NM) up to 4000 FT MSL due to airspace.

WAYPOINT COORDINATES		
FIX/POINTS	COORDINATES	RADIAL/DISTANCE
MANUX	55 40 34.3N 022 02 08.2E	KLP R088.8/D27.0 ; PLG D36.3
TIRIN	56 04 02.2N 020 44 52.2E	KLP R315.9/D27.0 ; PLG D13.2
VALUV	55 41 31.7N 020 07 58.7E	KLP R262.4/D37.7 ; PLG D36.0
XARIN	56 12 56.9N 021 58 56.6E	KLP R033.4/D39.1 ; PLG D33.9
KLP	55 42 56.1N 021 14 37.4E	
PN	55 57 23.1N 021 05 13.5E	
PLG	55 57 23.5N 021 05 13.4E	

FOR DETAILED FLIGHT PROCEDURES REFER TO AIP EYPA AD 2.22

Changes: MAG courses and radials from KLP.

STANDARD DEPARTURE CHART
INSTRUMENT (SID) - ICAO
TRANSITION ALT 5000

TWR 124.305
ATIS 127.805

PALANGA
RWY 19
MANUX 1B, TIRIN 1B,
VALUV 1B, XARIN 1B

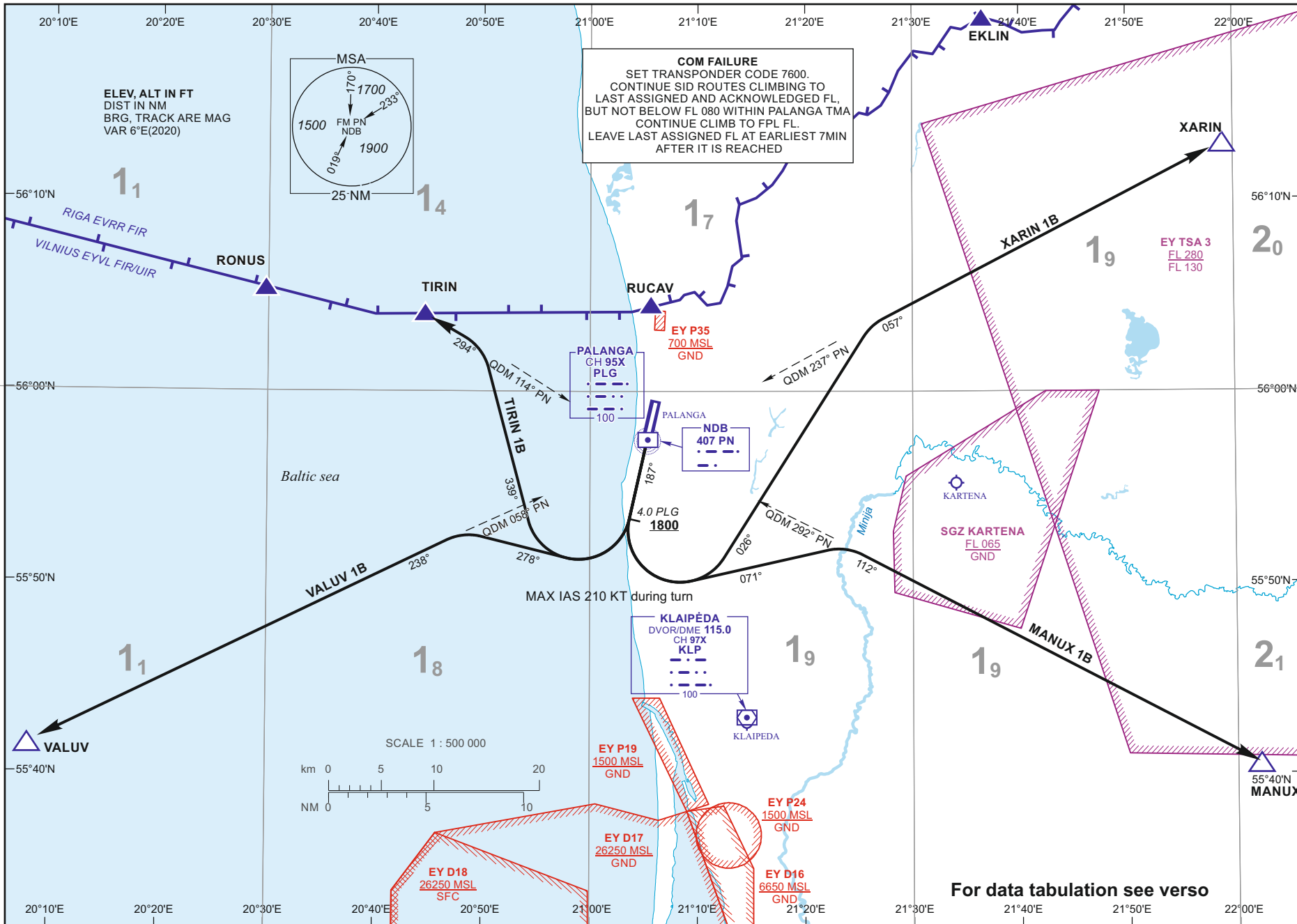
For data tabulation see verso

Changes: VAR and date of VAR; MAG courses; MSA; lateral limits of SGZ Kartena.

12 AUG 2021

©2019 ORO NAVIGACIJA

AIRAC AMDT 003/2021



**PALANGA
SID RWY 19**

TABULAR DESCRIPTION

STANDARD INSTRUMENT DEPARTURE (SID) ROUTES

SID NAME	ROUTE
MANUX 1B	Climb on RWY track to 4.0 DME PLG (at 1800 FT MSL or above). Turn left (MAX IAS 210 KT) to track 071°. Intercept QDM 292° PN, proceed to MANUX.
TIRIN 1B	Climb on RWY track to 4.0 DME PLG (at 1800 FT MSL or above). Turn right (MAX IAS 210 KT) to track 339°. Intercept QDM 114° PN, proceed to TIRIN.
VALUV 1B	Climb on RWY track to 4.0 DME PLG (at 1800 FT MSL or above). Turn right (MAX IAS 210 KT) to track 278°. Intercept QDM 058° PN, proceed to VALUV.
XARIN 1B	Climb on RWY track to 4.0 DME PLG (at 1800 FT MSL or above). Turn left (MAX IAS 210 KT) to track 026°. Intercept QDM 237° PN, proceed to XARIN.

Remark: 1. After take-off climb to 4000 FT MSL. Unless otherwise specified by ATC.
2. PDG: 6.6%(400 FT/NM) up to 4000 FT MSL due to airspace.

WAYPOINT COORDINATES		
FIX/POINTS	COORDINATES	RADIAL/DISTANCE
MANUX	55 40 34.3N 022 02 08.2E	KLP R088.8/D27.0 ; PLG D36.3
TIRIN	56 04 02.2N 020 44 52.2E	KLP R315.9/D27.0 ; PLG D13.2
VALUV	55 41 31.7N 020 07 58.7E	KLP R262.4/D37.7 ; PLG D36.0
XARIN	56 12 56.9N 021 58 56.6E	KLP R033.4/D39.1 ; PLG D33.9
KLP	55 42 56.1N 021 14 37.4E	
PN	55 57 23.1N 021 05 13.5E	
PLG	55 57 23.5N 021 05 13.4E	

FOR DETAILED FLIGHT PROCEDURES REFER TO AIP EYPA AD 2.22

Changes: MAG courses and radials from KLP.

RNAV 1 (GNSS)
STANDARD DEPARTURE CHART
INSTRUMENT (SID) - ICAO

TRANSITION ALT 5000

TWR 124.305
ATIS 127.805

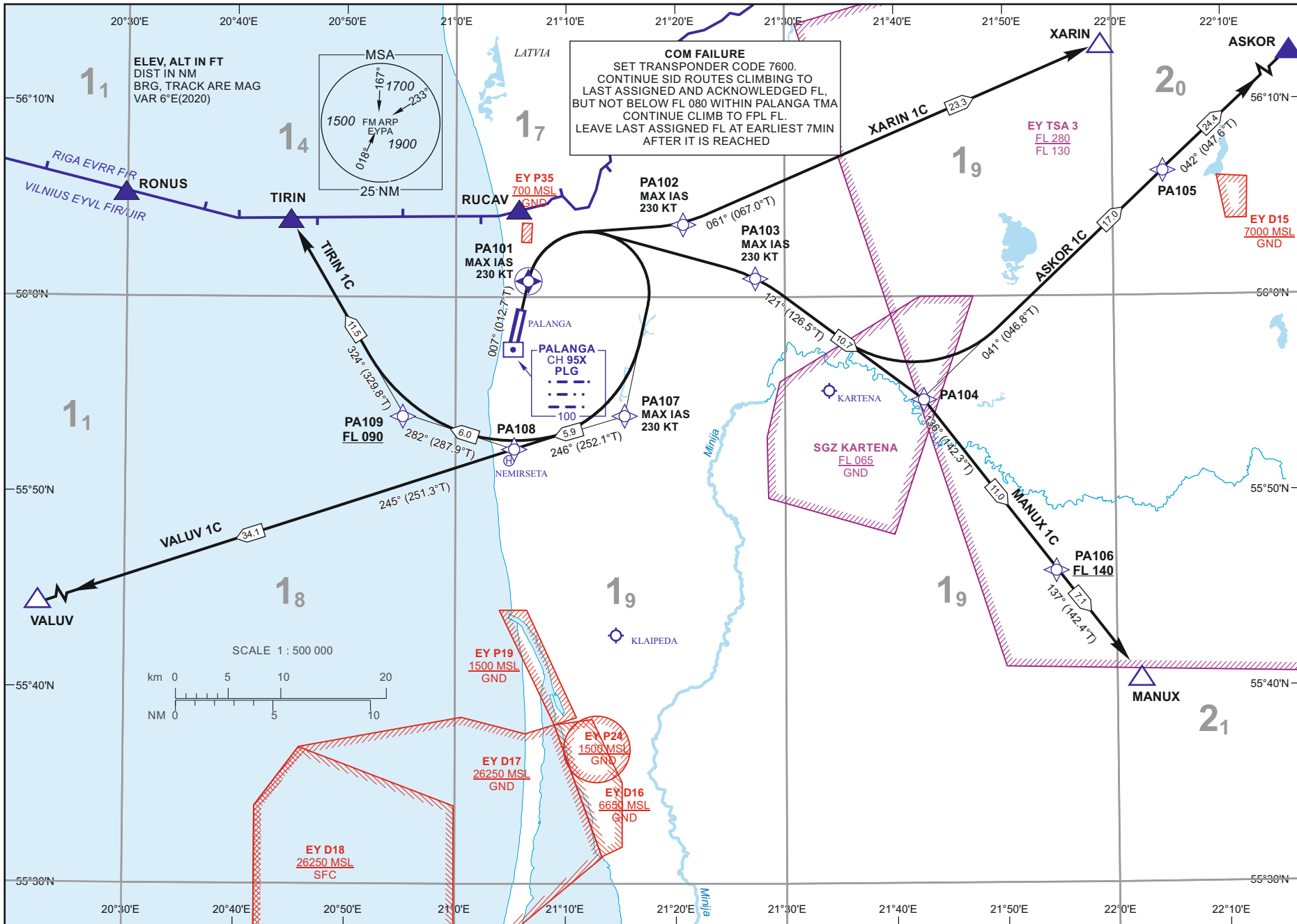
PALANGA
RWY 01
ASKOR 1C, MANUX 1C,
TIRIN 1C, VALUV 1C, XARIN 1C

Changes: VAR and date of VAR; MAG courses; MSA; lateral limits of SGZ Kartena.

12 AUG 2021

©2019 ORO NAVIGACIJA

AIRAC AMDT 003/2021



1₁

1₄

1₇

1₉

2₀

1₁

1₈

1₉

1₉

2₁

RIGA EVRR FIR
VILNIUS EYVL FIR/IR

RONUS

TIRIN

RUCAV

PALANGA

PALANGA CH 95X PLG

NEMIRSETA

XARIN

ASKOR

VALUV

MANUX

VALUV 1C

TIRIN 1C

PA101
MAX IAS
230 KT

PA102
MAX IAS
230 KT

PA103
MAX IAS
230 KT

PA107
MAX IAS
230 KT

XARIN 1C

EY TSA 3
FL 280
FL 130

EY D15
7000 MSL
GND

MANUX 1C

PA106
FL 140

EY P19
1500 MSL
GND

EY D17
26250 MSL
GND

EY P24
1500 MSL
GND

EY D16
6650 MSL
GND

EY D18
26250 MSL
SFC

RNAV 1 (GNSS)
STANDARD DEPARTURE CHART
INSTRUMENT (SID) - ICAO

TRANSITION ALT 5000

TWR 124.305
ATIS 127.805

PALANGA
RWY 01
ASKOR 1C, MANUX 1C,
TIRIN 1C, VALUV 1C, XARIN 1C

PALANGA

RNAV 1 (GNSS) SID

RWY 01

TABULAR DESCRIPTION

ASKOR 1C PDG 7.7% REQUIRED DUE TO OPERATIONAL REASONS UNTIL PA103

Serial Number	Path Descriptor	Waypoint Identifier	Fly-over	Course/Track °M(°T)	Magnetic Variation	Distance (NM)	Turn Direction	Altitude (FT)/ Flight level	Speed (KT)	Navigation Specification
001	CF	PA101	Y	007(012.7)	-5,9	2.0	—	—	-230	RNAV1
002	DF	PA103	—	—	-5,9	—	R	—	-230	RNAV1
003	TF	PA104	—	121(126.5)	-5,9	10.7	—	—	—	RNAV1
004	TF	PA105	—	041(046.8)	-5,9	17.0	—	—	—	RNAV1
005	TF	ASKOR	—	042(047.6)	-5,9	24.4	—	—	—	RNAV1

MANUX 1C PDG 7.7% REQUIRED DUE TO OPERATIONAL REASONS UNTIL PA103

Serial Number	Path Descriptor	Waypoint Identifier	Fly-over	Course/Track °M(°T)	Magnetic Variation	Distance (NM)	Turn Direction	Altitude (FT)/ Flight level	Speed (KT)	Navigation Specification
001	CF	PA101	Y	007(012.7)	-5,9	2.0	—	—	-230	RNAV1
002	DF	PA103	—	—	-5,9	—	R	—	-230	RNAV1
003	TF	PA104	—	121(126.5)	-5,9	10.7	—	—	—	RNAV1
004	TF	PA106	—	136(142.3)	-5,9	11.0	—	+FL140	—	RNAV1
005	TF	MANUX	—	137(142.4)	-5,9	7.1	—	—	—	RNAV1

TIRIN 1C PDG 7.7% REQUIRED DUE TO OPERATIONAL REASONS UNTIL PA107

Serial Number	Path Descriptor	Waypoint Identifier	Fly-over	Course/Track °M(°T)	Magnetic Variation	Distance (NM)	Turn Direction	Altitude (FT)/ Flight level	Speed (KT)	Navigation Specification
001	CF	PA101	Y	007(012.7)	-5,9	2.0	—	—	-230	RNAV1
002	DF	PA107	—	—	-5,9	—	R	—	-230	RNAV1
003	TF	PA108	—	246(252.1)	-5,9	5.9	—	—	—	RNAV1
004	TF	PA109	—	282(287.9)	-5,9	6.0	—	+FL090	—	RNAV1
005	TF	TIRIN	—	324(329.8)	-5,9	11.5	—	—	—	RNAV1

VALUV 1C PDG 7.7% REQUIRED DUE TO OPERATIONAL REASONS UNTIL PA107

Serial Number	Path Descriptor	Waypoint Identifier	Fly-over	Course/Track °M(°T)	Magnetic Variation	Distance (NM)	Turn Direction	Altitude (FT)/ Flight level	Speed (KT)	Navigation Specification
001	CF	PA101	Y	007(012.7)	-5,9	2.0	—	—	-230	RNAV1
002	DF	PA107	—	—	-5,9	—	R	—	-230	RNAV1
003	TF	PA108	—	246(252.1)	-5,9	5.9	—	—	—	RNAV1
004	TF	VALUV	—	245(251.3)	-5,9	34.1	—	—	—	RNAV1

FOR DETAILED FLIGHT PROCEDURES REFER TO AIP EYPA AD 2.22

Changes: MAG VAR and MAG courses.

PALANGA
RNAV 1 (GNSS) SID
RWY 01

TABULAR DESCRIPTION

XARIN 1C PDG 7.7% REQUIRED DUE TO OPERATIONAL REASONS UNTIL PA101										
Serial Number	Path Descriptor	Waypoint Identifier	Fly-over	Course/Track °M(°T)	Magnetic Variation	Distance (NM)	Turn Direction	Altitude (FT)/ Flight level	Speed (KT)	Navigation Specification
001	CF	PA101	Y	007(012.7)	-5,9	2.0	—	—	-230	RNAV1
002	DF	PA102	—	—	-5,9	—	R	—	-230	RNAV1
003	TF	XARIN	—	061(067.0)	-5,9	23.3	—	—	—	RNAV1

WAYPOINT COORDINATES			
FIX/POINTS	COORDINATES	FIX/POINTS	COORDINATES
PA101	56 00 55.9N 021 06 39.3E	ASKOR	56 22 58.0N 022 36 46.0E
PA102	56 03 45.6N 021 20 40.3E	MANUX	55 40 34.3N 022 02 08.2E
PA103	56 01 09.3N 021 27 16.5E	TIRIN	56 04 02.2N 020 44 52.2E
PA104	55 54 49.1N 021 42 34.6E	VALUV	55 41 31.7N 020 07 58.7E
PA105	56 06 27.9N 022 04 35.9E	XARIN	56 12 56.9N 021 58 56.6E
PA106	55 46 08.4N 021 54 31.4E	PLG	55 57 23.5N 021 05 13.4E
PA107	55 54 02.9N 021 15 22.2E		
PA108	55 52 13.8N 021 05 19.4E		
PA109	55 54 04.4N 020 55 11.3E		

FOR DETAILED FLIGHT PROCEDURES REFER TO AIP EYPA AD 2.22

Changes: MAG VAR and MAG courses.

THIS PAGE INTENTIONALLY LEFT BLANK

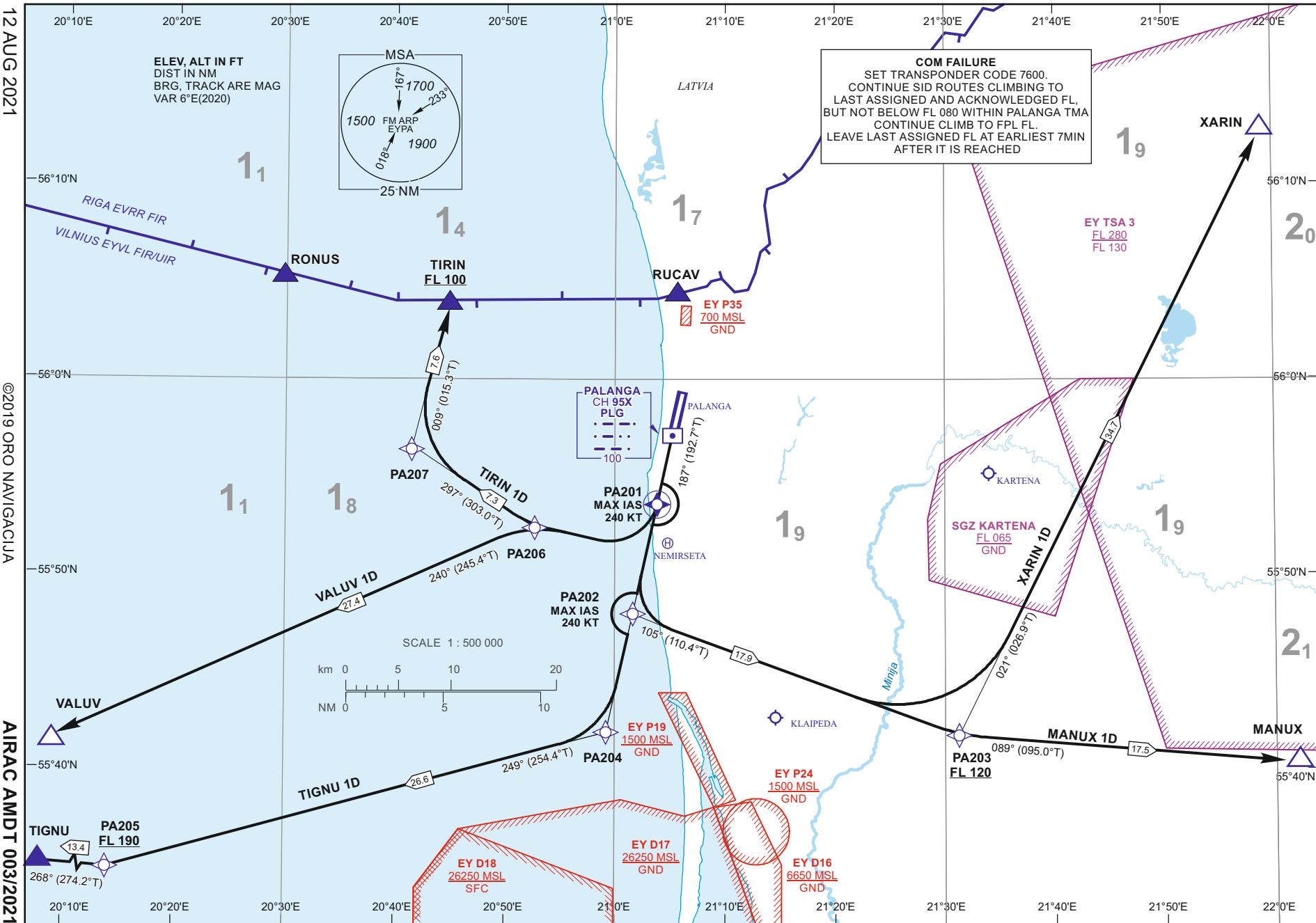
RNAV 1 (GNSS)
STANDARD DEPARTURE CHART
INSTRUMENT (SID) - ICAO

TRANSITION ALT 5000

TWR 124.305
ATIS 127.805

TIRIN 1D, VALUV 1D, XARIN 1D,
MANUX 1D, TIGNU 1D,
PALANGA
RWY 19

Changes: VAR and date of VAR; MAG courses; MSA; lateral limits of SGZ Kartena.

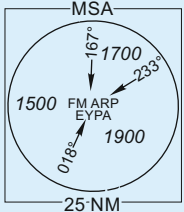


12 AUG 2021

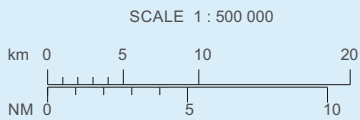
©2019 ORO NAVIGACIJA

AIRAC AMDT 003/2021

ELEV. ALT IN FT
DIST IN NM
BRG, TRACK ARE MAG
VAR 6°E(2020)



COM FAILURE
 SET TRANSPONDER CODE 7600.
 CONTINUE SID ROUTES CLIMBING TO
 LAST ASSIGNED AND ACKNOWLEDGED FL,
 BUT NOT BELOW FL 080 WITHIN PALANGA TMA
 CONTINUE CLIMB TO FPL FL.
 LEAVE LAST ASSIGNED FL AT EARLIEST 7MIN
 AFTER IT IS REACHED



PALANGA

RNAV 1 (GNSS) SID

RWY 19

TABULAR DESCRIPTION

MANUX 1D PDG 6.6% REQUIRED DUE TO OPERATIONAL REASONS UNTIL PA202										
Serial Number	Path Descriptor	Waypoint Identifier	Fly-over	Course/Track °M(°T)	Magnetic Variation	Distance (NM)	Turn Direction	Altitude (FT)/ Flight level	Speed (KT)	Navigation Specification
001	CF	PA202	—	187(192.7)	-5,9	9.9	—	—	-240	RNAV1
002	TF	PA203	—	105(110.4)	-5,9	17.9	—	+FL120	—	RNAV1
003	TF	MANUX	—	089(095.0)	-5,9	17.5	—	—	—	RNAV1
TIGNU 1D PDG 7.7% REQUIRED DUE TO OPERATIONAL REASONS UNTIL PA204										
Serial Number	Path Descriptor	Waypoint Identifier	Fly-over	Course/Track °M(°T)	Magnetic Variation	Distance (NM)	Turn Direction	Altitude (FT)/ Flight level	Speed (KT)	Navigation Specification
001	CF	PA204	—	187(192.7)	-5,9	16.0	—	—	—	RNAV1
002	TF	PA205	—	249(254.4)	-5,9	26.6	—	+FL190	—	RNAV1
003	TF	TIGNU	—	268(274.2)	-5,9	13.4	—	—	—	RNAV1
TIRIN 1D PDG 6.6% REQUIRED DUE TO OPERATIONAL REASONS UNTIL PA201										
Serial Number	Path Descriptor	Waypoint Identifier	Fly-over	Course/Track °M(°T)	Magnetic Variation	Distance (NM)	Turn Direction	Altitude (FT)/ Flight level	Speed (KT)	Navigation Specification
001	CF	PA201	Y	187(192.7)	-5,9	4.0	—	—	-240	RNAV1
002	DF	PA206	—	—	-5,9	—	R	—	—	RNAV1
003	TF	PA207	—	297(303.0)	-5,9	7.3	—	—	—	RNAV1
004	TF	TIRIN	—	009(015.3)	-5,9	7.6	—	+FL100	—	RNAV1
VALUV 1D PDG 6.6% REQUIRED DUE TO OPERATIONAL REASONS UNTIL PA201										
Serial Number	Path Descriptor	Waypoint Identifier	Fly-over	Course/Track °M(°T)	Magnetic Variation	Distance (NM)	Turn Direction	Altitude (FT)/ Flight level	Speed (KT)	Navigation Specification
001	CF	PA201	Y	187(192.7)	-5,9	4.0	—	—	-240	RNAV1
002	DF	PA206	—	—	-5,9	—	R	—	—	RNAV1
003	TF	VALUV	—	240(245.4)	-5,9	27.4	—	—	—	RNAV1
XARIN 1D PDG 6.6% REQUIRED DUE TO OPERATIONAL REASONS UNTIL PA202										
Serial Number	Path Descriptor	Waypoint Identifier	Fly-over	Course/Track °M(°T)	Magnetic Variation	Distance (NM)	Turn Direction	Altitude (FT)/ Flight level	Speed (KT)	Navigation Specification
001	CF	PA202	—	187(192.7)	-5,9	9.9	—	—	-240	RNAV1
002	TF	PA203	—	105(110.4)	-5,9	17.9	—	+FL120	—	RNAV1
003	TF	XARIN	—	021(026.9)	-5,9	34.7	—	—	—	RNAV1

WAYPOINT COORDINATES

FIX/POINTS	COORDINATES	FIX/POINTS	COORDINATES	FIX/POINTS	COORDINATES
PA201	55 53 53.6N 021 03 49.3E	PA206	55 52 45.3N 020 52 07.8E	VALUV	55 41 31.7N 020 07 58.7E
PA202	55 48 11.8N 021 01 32.4E	PA207	55 56 43.4N 020 41 17.9E	XARIN	56 12 56.9N 021 58 56.6E
PA203	55 42 01.7N 021 31 15.8E	MANUX	55 40 34.3N 022 02 08.2E	PLG	55 57 23.5N 021 05 13.4E
PA204	55 42 12.7N 020 59 09.3E	TIGNU	55 36 13.0N 019 50 17.9E		
PA205	55 35 12.2N 020 13 53.6E	TIRIN	56 04 02.2N 020 44 52.2E		

FOR DETAILED FLIGHT PROCEDURES REFER TO AIP EYPAAD 2.22

Changes: MAG VAR and MAG courses.

RNAV 1 (GNSS)
STANDARD ARRIVAL CHART
INSTRUMENT (STAR) - ICAO

TRANSITION ALT 5000

ATIS
TWR
127.805
124.305

PALANGA
RWY 01
MANUX 2A, TIRIN 2A,
VALUV 2A, XARIN 2A

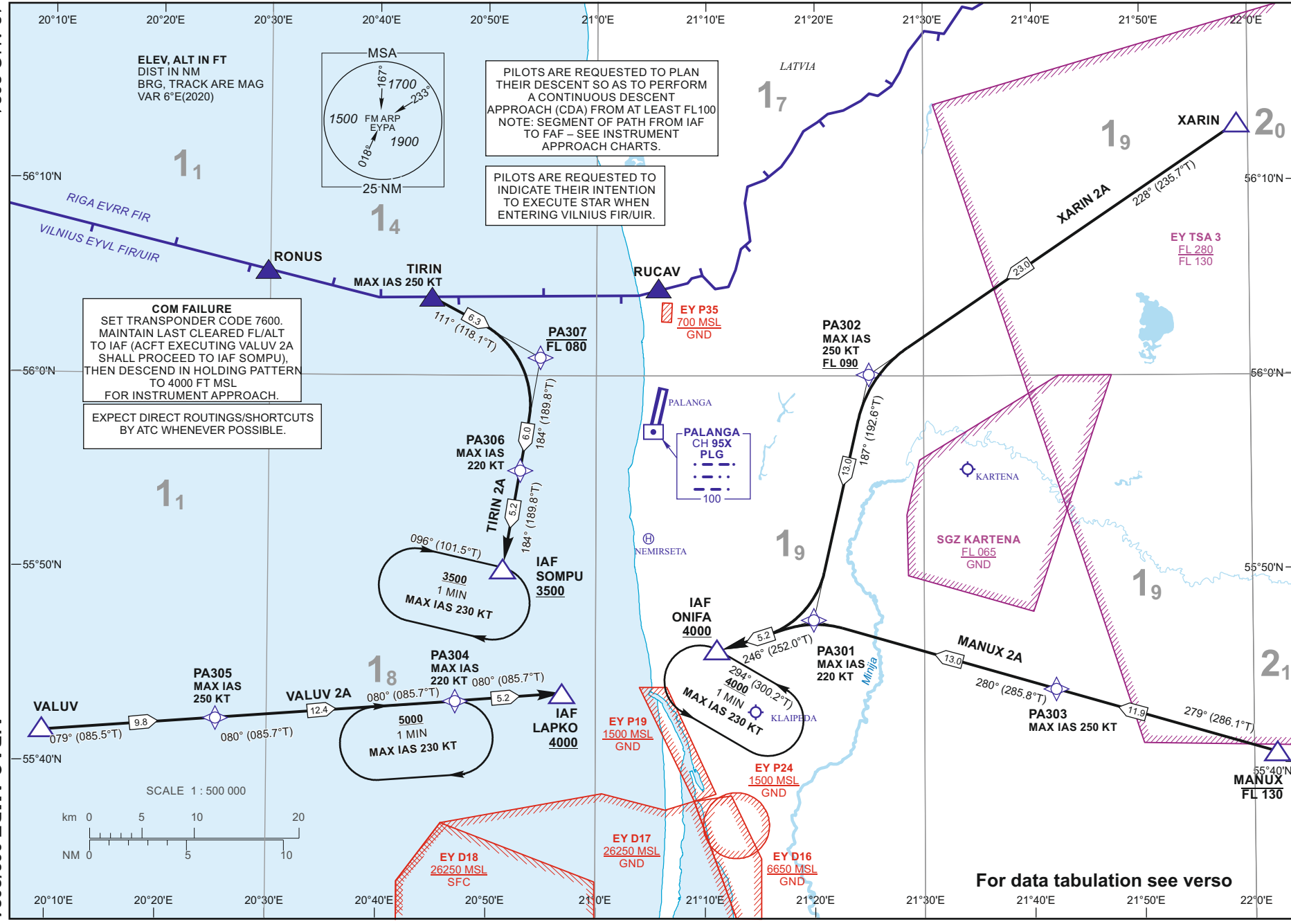
For data tabulation see verso

Changes: VAR and date of VAR; MAG courses; MSA; lateral limits of SGZ Kartena; courses of HLDG ONIFA and SOMPU; ALT of HLDG and IAF SOMPU.

12 AUG 2021

©2019 ORO NAVIGACIJA

AIRAC AMDT 003/2021



PILOTS ARE REQUESTED TO PLAN THEIR DESCENT SO AS TO PERFORM A CONTINUOUS DESCENT APPROACH (CDA) FROM AT LEAST FL100
NOTE: SEGMENT OF PATH FROM IAF TO FAF - SEE INSTRUMENT APPROACH CHARTS.

PILOTS ARE REQUESTED TO INDICATE THEIR INTENTION TO EXECUTE STAR WHEN ENTERING VILNIUS FIR/UIR.

COM FAILURE
SET TRANSPONDER CODE 7600. MAINTAIN LAST CLEARED FL/ALT TO IAF (ACFT EXECUTING VALUV 2A SHALL PROCEED TO IAF SOMPU), THEN DESCEND IN HOLDING PATTERN TO 4000 FT MSL FOR INSTRUMENT APPROACH.
EXPECT DIRECT ROUTINGS/SHORTCUTS BY ATC WHENEVER POSSIBLE.

PALANGA
RNAV 1 (GNSS) STAR
RWY 01

TABULAR DESCRIPTION

MANUX 2A										
Serial Number	Path Descriptor	Waypoint Identifier	Fly-over	Course/Track °M(°T)	Magnetic Variation	Distance (NM)/ Time	Turn Direction	Altitude (FT)/ Flight level	Speed (KT)	Navigation Specification
001	IF	MANUX	—	—	-7,4	—	—	-FL130	—	RNAV1
002	TF	PA303	—	279(286.1)	-7,4	11.9	—	—	-250	RNAV1
003	TF	PA301	—	280(285.8)	-5,9	13.0	—	—	-220	RNAV1
004	TF	ONIFA	—	246(252.0)	-5,9	5.2	—	+4000	—	RNAV1

TIRIN 2A										
Serial Number	Path Descriptor	Waypoint Identifier	Fly-over	Course/Track °M(°T)	Magnetic Variation	Distance (NM)/ Time	Turn Direction	Altitude (FT)/ Flight level	Speed (KT)	Navigation Specification
001	IF	TIRIN	—	—	-7,1	—	—	—	-250	RNAV1
002	TF	PA307	—	111(118.1)	-7,1	6.3	—	-FL080	—	RNAV1
003	TF	PA306	—	184(189.8)	-5,9	6.0	—	—	-220	RNAV1
004	TF	SOMPU	—	184(189.8)	-5,9	5.2	—	+3500	—	RNAV1

VALUV 2A										
Serial Number	Path Descriptor	Waypoint Identifier	Fly-over	Course/Track °M(°T)	Magnetic Variation	Distance (NM)/ Time	Turn Direction	Altitude (FT)/ Flight level	Speed (KT)	Navigation Specification
001	IF	VALUV	—	—	-6,8	—	—	—	—	RNAV1
002	TF	PA305	—	079(085.5)	-6,8	9.8	—	—	-250	RNAV1
003	TF	PA304	—	080(085.7)	-5,9	12.4	—	—	-220	RNAV1
004	TF	LAPKO	—	080(085.7)	-5,9	5.2	—	+4000	—	RNAV1

XARIN 2A										
Serial Number	Path Descriptor	Waypoint Identifier	Fly-over	Course/Track °M(°T)	Magnetic Variation	Distance (NM)/ Time	Turn Direction	Altitude (FT)/ Flight level	Speed (KT)	Navigation Specification
001	IF	XARIN	—	—	-7,5	—	—	—	—	RNAV1
002	TF	PA302	—	228(235.7)	-7,5	23.0	—	+FL090	-250	RNAV1
003	TF	PA301	—	187(192.6)	-5,9	13.0	—	—	-220	RNAV1
004	TF	ONIFA	—	246(252.0)	-5,9	5.2	—	+4000	—	RNAV1

HOLDINGS IDENTIFICATION									
Holding fix	Geographical coordinates	Inbound track °M(°T)	Magnetic Variation	Outbound distance (NM)/ Time	Turn Direction	Minimum/Maximum holding altitude (FT)/Flight level	Speed (KT)		
ONIFA	55 45 51.4N 021 11 02.4E	294(300.2)	-5,9	1 min	L	+4000	-230		
PA304	55 43 16.4N 020 47 05.2E	080(085.7)	-5,9	1 min	R	+5000	-230		
SOMPU	55 50 04.5N 020 51 23.2E	096(101.5)	-5,9	1 min	R	+3500	-230		

WAYPOINT COORDINATES							
FIX/POINTS	COORDINATES	FIX/POINTS	COORDINATES	FIX/POINTS	COORDINATES		
PA301	55 47 27.9N 021 19 50.9E	PA306	55 55 08.8N 020 52 56.7E	SOMPU	55 50 04.5N 020 51 23.2E		
PA302	56 00 06.2N 021 24 54.2E	PA307	56 01 04.5N 020 54 46.5E	TIRIN	56 04 02.2N 020 44 52.2E		
PA303	55 43 53.5N 021 41 58.7E	LAPKO	55 43 39.9N 020 56 15.3E	VALUV	55 41 31.7N 020 07 58.7E		
PA304	55 43 16.4N 020 47 05.2E	MANUX	55 40 34.3N 022 02 08.2E	XARIN	56 12 56.9N 021 58 56.6E		
PA305	55 42 18.8N 020 25 14.4E	ONIFA	55 45 51.4N 021 11 02.4E	PLG	55 57 23.5N 021 05 13.4E		

FOR DETAILED FLIGHT PROCEDURES REFER TO AIP EYPAAD 2.22

Changes: MAG VAR and MAG courses; courses of HLDG ONIFA and SOMPU; ALT of HLDG SOMPU.

RNAV 1 (GNSS)
STANDARD ARRIVAL CHART
INSTRUMENT (STAR) - ICAO

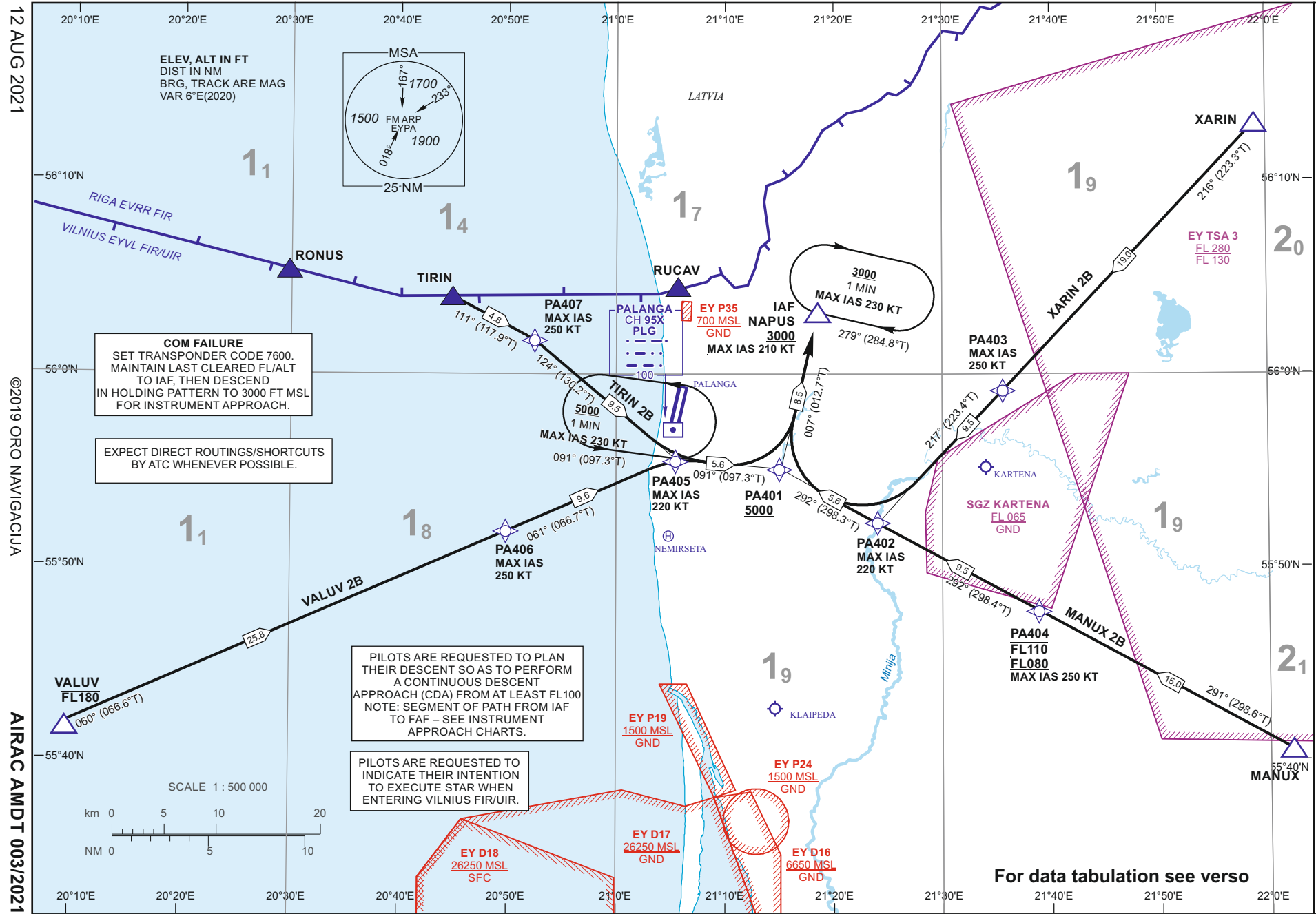
TRANSITION ALT 5000

ATIS 127.805
TWR 124.305

PALANGA
RWY 19
MANUX 2B, TIRIN 2B,
VALUV 2B, XARIN 2B

For data tabulation see verso

Changes: VAR and date of VAR; MAG courses; MSA; lateral limits of SGZ Kartena; courses of HLDG NAPUS.



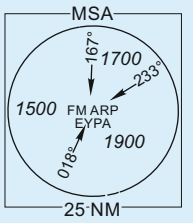
COM FAILURE
SET TRANSPONDER CODE 7600.
MAINTAIN LAST CLEARED FL/ALT
TO IAF, THEN DESCEND
IN HOLDING PATTERN TO 3000 FT MSL
FOR INSTRUMENT APPROACH.

EXPECT DIRECT ROUTINGS/SHORTCUTS
BY ATC WHENEVER POSSIBLE.

PILOTS ARE REQUESTED TO PLAN
THEIR DESCENT SO AS TO PERFORM
A CONTINUOUS DESCENT
APPROACH (CDA) FROM AT LEAST FL100
NOTE: SEGMENT OF PATH FROM IAF
TO FAF - SEE INSTRUMENT
APPROACH CHARTS.

PILOTS ARE REQUESTED TO
INDICATE THEIR INTENTION
TO EXECUTE STAR WHEN
ENTERING VILNIUS FIR/UIR.

ELEV. ALT IN FT
DIST IN NM
BRG, TRACK ARE MAG
VAR 6°E(2020)



12 AUG 2021

©2019 ORO NAVIGACIJA

AIRAC AMDT 003/2021

PALANGA
RNAV 1 (GNSS) STAR
RWY 19

TABULAR DESCRIPTION

MANUX 2B										
Serial Number	Path Descriptor	Waypoint Identifier	Fly-over	Course/Track °M(°T)	Magnetic Variation	Distance (NM)/ Time	Turn Direction	Altitude (FT)/ Flight level	Speed (KT)	Navigation Specification
001	IF	MANUX	—	—	-7,4	—	—	—	—	RNAV1
002	TF	PA404	—	291(298.6)	-7,4	15.0	—	-FL110/+FL080	-250	RNAV1
003	TF	PA402	—	292(298.4)	-5,9	9.5	—	—	-220	RNAV1
004	TF	PA401	—	292(298.3)	-5,9	5.6	—	+5000	—	RNAV1
005	TF	NAPUS	—	007(012.7)	-5,9	8.5	—	+3000	-210	RNAV1
TIRIN 2B										
Serial Number	Path Descriptor	Waypoint Identifier	Fly-over	Course/Track °M(°T)	Magnetic Variation	Distance (NM)/ Time	Turn Direction	Altitude (FT)/ Flight level	Speed (KT)	Navigation Specification
001	IF	TIRIN	—	—	-7,1	—	—	—	—	RNAV1
002	TF	PA407	—	111(117.9)	-7,1	4.8	—	—	-250	RNAV1
003	TF	PA405	—	124(130.2)	-5,9	9.5	—	—	-220	RNAV1
004	TF	PA401	—	091(097.3)	-5,9	5.6	—	+5000	—	RNAV1
005	TF	NAPUS	—	007(012.7)	-5,9	8.5	—	+3000	-210	RNAV1
VALUV 2B										
Serial Number	Path Descriptor	Waypoint Identifier	Fly-over	Course/Track °M(°T)	Magnetic Variation	Distance (NM)/ Time	Turn Direction	Altitude (FT)/ Flight level	Speed (KT)	Navigation Specification
001	IF	VALUV	—	—	-6,8	—	—	-FL180	—	RNAV1
002	TF	PA406	—	060(066.6)	-6,8	25.8	—	—	-250	RNAV1
003	TF	PA405	—	061(066.7)	-5,9	9.6	—	—	-220	RNAV1
004	TF	PA401	—	091(097.3)	-5,9	5.6	—	+5000	—	RNAV1
005	TF	NAPUS	—	007(012.7)	-5,9	8.5	—	+3000	-210	RNAV1
XARIN 2B										
Serial Number	Path Descriptor	Waypoint Identifier	Fly-over	Course/Track °M(°T)	Magnetic Variation	Distance (NM)/ Time	Turn Direction	Altitude (FT)/ Flight level	Speed (KT)	Navigation Specification
001	IF	XARIN	—	—	-7,5	—	—	—	—	RNAV1
002	TF	PA403	—	216(223.3)	-7,5	19.0	—	—	-250	RNAV1
003	TF	PA402	—	217(223.4)	-5,9	9.5	—	—	-220	RNAV1
004	TF	PA401	—	292(298.3)	-5,9	5.6	—	+5000	—	RNAV1
005	TF	NAPUS	—	007(012.7)	-5,9	8.5	—	+3000	-210	RNAV1

HOLDINGS IDENTIFICATION									
Holding fix	Geographical coordinates	Inbound track °M(°T)	Magnetic Variation	Outbound distance (NM)/ Time	Turn Direction	Minimum/Maximum holding altitude (FT)/Flight level	Speed (KT)		
NAPUS	56 03 12.1N 021 18 32.7E	279(284.8)	-5,9	1 min	R	+3000	-230		
PA405	55 55 40.5N 021 05 23.3E	091(097.3)	-5,9	1 min	L	+5000	-230		

FOR DETAILED FLIGHT PROCEDURES REFER TO AIP EYPA AD 2.22

Changes: MAG VAR and MAG courses; courses of HLDG NAPUS.

PALANGA
RNAV 1 (GNSS) STAR
RWY 19

TABULAR DESCRIPTION

WAYPOINT COORDINATES					
FIX/POINTS	COORDINATES	FIX/POINTS	COORDINATES	FIX/POINTS	COORDINATES
PA401	55 54 58.5N 021 15 14.2E	PA406	55 51 53.1N 020 49 47.8E	TIRIN	56 04 02.2N 020 44 52.2E
PA402	55 52 18.9N 021 24 00.0E	PA407	56 01 48.3N 020 52 24.1E	VALUV	55 41 31.7N 020 07 58.7E
PA403	55 59 09.2N 021 35 34.0E	MANUX	55 40 34.3N 022 02 08.2E	XARIN	56 12 56.9N 021 58 56.6E
PA404	55 47 46.2N 021 38 52.4E	NAPUS	56 03 12.1N 021 18 32.7E	PLG	55 57 23.5N 021 05 13.4E
PA405	55 55 40.5N 021 05 23.3E				

THIS PAGE INTENTIONALLY LEFT BLANK

ATC SURVEILLANCE MINIMUM AERODROME ELEV 33
ALTITUDE CHART — ICAO
TRANSITION ALT 5000

PALANGA

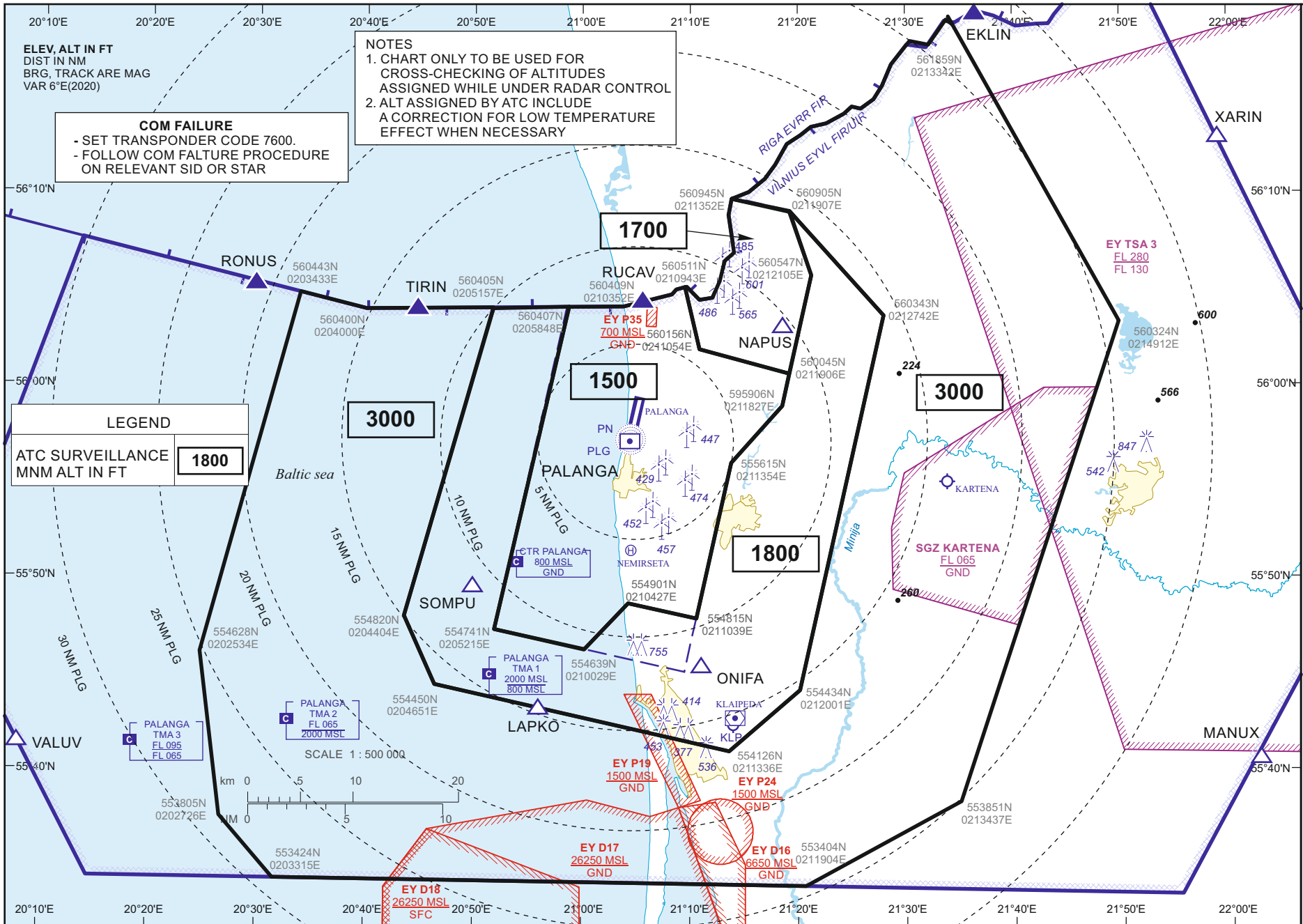
TWR 124.305
ATIS 127.805

Changes: VAR and date of VAR; lateral limits of SGZ Kartena.

12 AUG 2021

©2019 ORO NAVIGACIJA

AIRAC AMDT 003/2021



ELEV. ALT IN FT
DIST IN NM
BRG. TRACK ARE MAG
VAR 6°E(2020)

COM FAILURE
- SET TRANSPONDER CODE 7600.
- FOLLOW COM FAILURE PROCEDURE ON RELEVANT SID OR STAR

NOTES
1. CHART ONLY TO BE USED FOR CROSS-CHECKING OF ALTITUDES ASSIGNED WHILE UNDER RADAR CONTROL
2. ALT ASSIGNED BY ATC INCLUDE A CORRECTION FOR LOW TEMPERATURE EFFECT WHEN NECESSARY

LEGEND
ATC SURVEILLANCE MNM ALT IN FT

1800

3000

1500

1700

3000

1800

PALANGA TMA 3
FL 095
FL 065

PALANGA TMA 2
FL 065
2000 MSL

PALANGA TMA 1
2000 MSL
800 MSL

CTR PALANGA
800 MSL
GND

EY P35
700 MSL
GND-0241054E

EY D18
26250 MSL
SFC

EY D17
26250 MSL
GND

EY P19
1500 MSL
GND

EY D16
6650 MSL
GND

EY P24
1500 MSL
GND

EY TSA 3
FL 280
FL 130

SGZ KARTENA
FL 065
GND

RONUS

TIRIN

RUCAV

NAPUS

PALANGA

ONIFA

LAPKO

VALUV

EKLIN

XARIN

MANUX

RIGA EVRR FIR

VILNIUS EYVL FIR

Baltic sea

Mynija

30 NM PLG

25 NM PLG

20 NM PLG

15 NM PLG

10 NM PLG

5 NM PLG

30 NM PLG

25 NM PLG

20 NM PLG

15 NM PLG

10 NM PLG

5 NM PLG

30 NM PLG

25 NM PLG

20 NM PLG

15 NM PLG

10 NM PLG

5 NM PLG

30 NM PLG

25 NM PLG

20 NM PLG

15 NM PLG

10 NM PLG

5 NM PLG

30 NM PLG

25 NM PLG

20 NM PLG

15 NM PLG

10 NM PLG

5 NM PLG

30 NM PLG

25 NM PLG

20 NM PLG

15 NM PLG

10 NM PLG

5 NM PLG

30 NM PLG

25 NM PLG

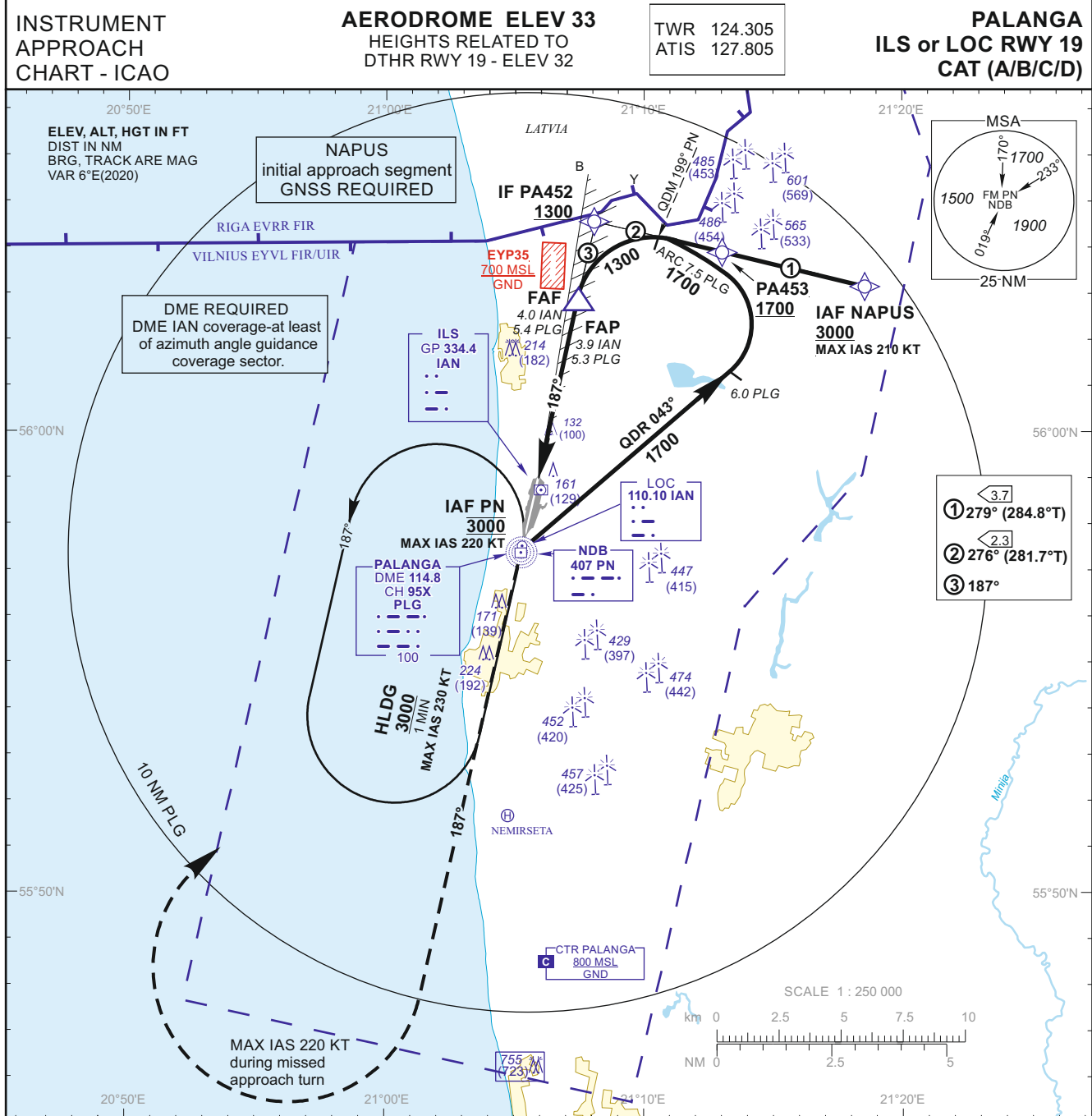
20 NM PLG

15 NM PLG

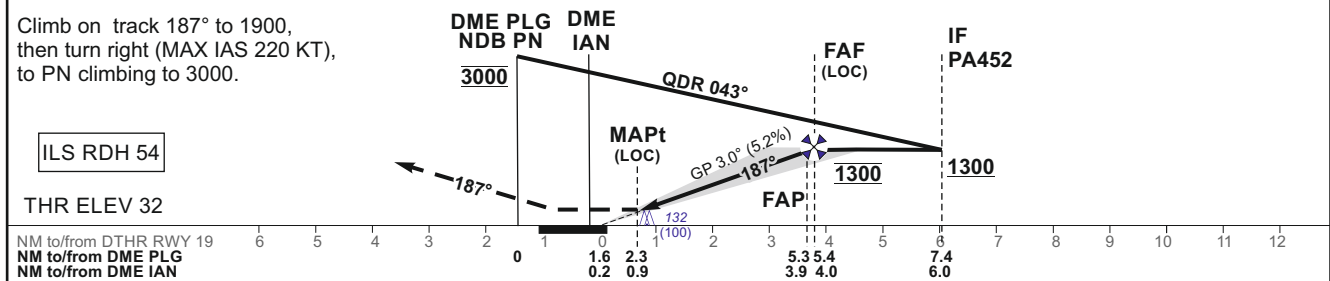
10 NM PLG

5 NM PLG

THIS PAGE INTENTIONALLY LEFT BLANK



MISSED APPROACH TRANSITION ALT 5000



OCA(OCH)		A	B	C	D	DIST DME IAN	3	2	
STRAIGHT-IN APPROACH	ILS CAT I	250 (218)	262 (230)	270 (238)	281 (249)	Altitude	980	660	
	LOC	380 (350)				Height	(948)	(628)	
CIRCLING		460 (430)	710 (680)	860 (820)	not authorized	LOC : timing not authorized for defining the MAPt			
		GS	Kts	80	100	120	140	160	180
		FAF - MAPt 3.1 NM	min:sec	2:19	1:52	1:33	1:20	1:10	1:02
		Rate of descent (5.2%)	ft/min	415	520	625	730	835	940

For data tabulation see verso

Changes: VAR and date of VAR; MAG courses; MSA; SQZ Kartena withdrawn; coordinates of PA453, PA452, FAF and FAP; speed IAF PN;

INSTRUMENT
APPROACH
CHART - ICAO

AERODROME ELEV 33
HEIGHTS RELATED TO
DTHR RWY 19 - ELEV 32

TWR 124.305
ATIS 127.805

PALANGA
ILS or LOC RWY 19
CAT (A/B/C/D)

TABULAR DESCRIPTION

IAF NAPUS, INITIAL APPROACH

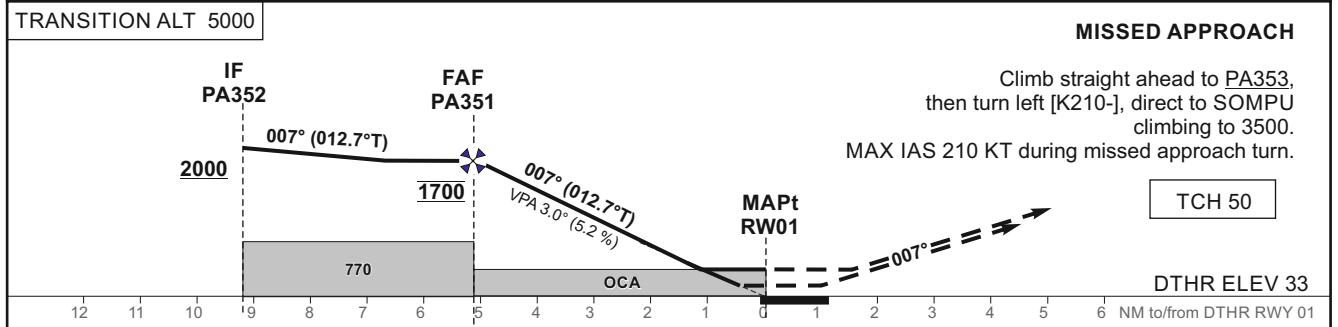
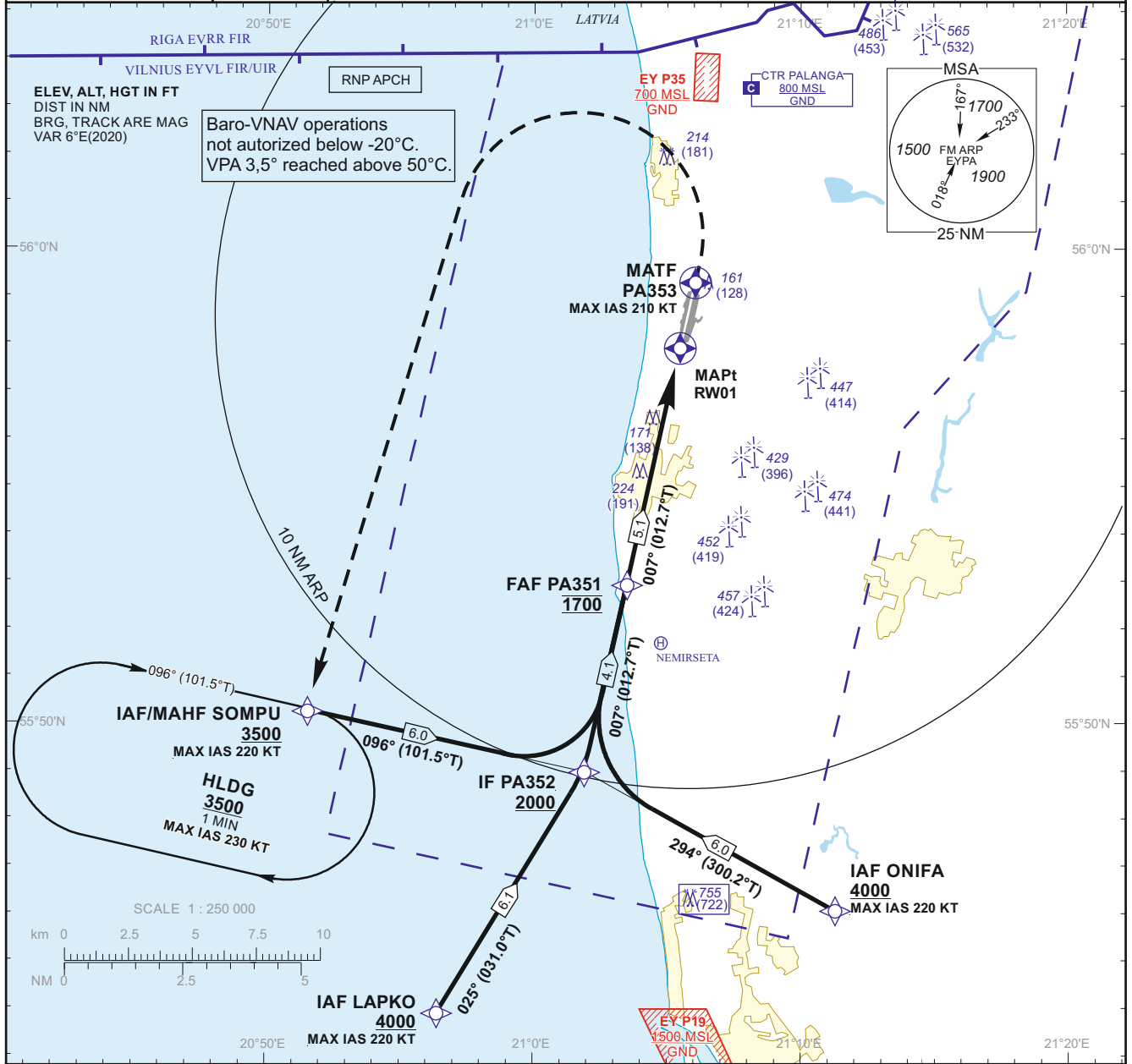
Serial Number	Path Descriptor	Waypoint Identifier	Fly-over	Course/Track °M(°T)	Magnetic Variation	Distance (NM)/ Time	Turn Direction	Altitude (FT)/ Flight level	Speed (KT)	VPA/TCH	Navigation Specification
001	IF	NAPUS	—	—	-5.9	—	—	+3000	-210	—	RVAV 1
002	TF	PA453	—	279(284.8)	-5.9	3.7	—	+1700	—	—	RVAV 1
003	TF	PA452	—	276(281.7)	-5.9	2.3	—	+1300	—	—	RVAV 1

ILS or LOC INSTRUMENT APPROACH from IAFs (PN, NAPUS)

FIX/POINTS	COORDINATES	FIX FORMATION
NAPUS (IAF)	56 03 12.1N 021 18 32.7E	BRG 226.10° PN ; 9.48 NM PLG
PN (IAF)	55 57 23.1N 021 05 13.5E	
PA453	56 04 08.3N 021 12 13.2E	BRG 204.20° PN ; 7.82 NM PLG
PA452 (IF)	56 04 36.6N 021 08 08.6E	BRG 186.85° / 6.03 NM IAN ; 7.42 NM PLG
FAF	56 02 39.7N 021 07 21.2E	BRG 186.85° / 4.02 NM IAN ; 5.41 NM PLG
FAP	56 02 34.8N 021 07 19.2E	BRG 186.85° / 3.94 NM IAN ; 5.33 NM PLG
MAPt	55 59 35.3N 021 06 06.8E	BRG 186.85° / 0.87 NM IAN ; 2.25 NM PLG
DTHR RWY 19	55 58 54.36N 021 05 50.27E	
DME PLG	55 57 23.5N 021 05 13.4E	
DME IAN	55 58 43.8N 021 05 53.7E	
LOC IAN	55 57 35.8N 021 05 18.6E	
Final approach (LOC) descent angle: 3.00°		

Changes: MAG courses; coordinates of PA453, PA452, FAF and FAP.

INSTRUMENT APPROACH CHART - ICAO	EGNOS CH 84388 E01A	AERODROME ELEV 33 HEIGHTS RELATED TO DTHR RWY 01 - ELEV 33	TWR 124.305 ATIS 127.805	PALANGA RNP RWY 01 (CAT A/B/C/D)
---	----------------------------	--	-----------------------------	---



OCA(OCH)		A	B	C	D	DIST TO RW01							
STRAIGHT-IN APPROACH	LPV	283 (250)	286 (253)	294 (261)	304(271)	Altitude	5	4	3	2			
	LNAV/VNAV	290 (250)	290 (260)	300 (270)	310 (280)		1680	1360	1040	720			
	LNAV	470 (440)				Timing not authorized for defining the MAPt							
CIRCLING		460 (430)	710 (680)	860 (820)	not authorized	GS	Kts	80	100	120	140	160	180
						FAF-MAPt 5.1 NM	min:sec	3:49	3:03	2:33	2:11	1:55	1:42
						Rate of descent (5.2%)	ft/min	415	520	625	730	835	940

For data tabulation see verso

Changes: SBAS data block on page 3.

INSTRUMENT APPROACH CHART - ICAO	EGNOS CH 84388 E01A	AERODROME ELEV 33 HEIGHTS RELATED TO DTHR RWY 01 - ELEV 33	TWR 124.305 ATIS 127.805	PALANGA RNP RWY 01 (CAT A/B/C/D)
---	----------------------------	---	-----------------------------	---

TABULAR DESCRIPTION

IAF LAPKO

Serial Number	Path Descriptor	Waypoint Identifier	Fly-over	Course/Track °M(°T)	Magnetic Variation	Distance (NM)/ Time	Turn Direction	Altitude (FT)/ Flight level	Speed (KT)	VPA/TCH	Navigation Specification
001	IF	LAPKO	—	—	-5.9	—	—	+4000	-220	—	RNP APCH
002	TF	PA352	—	025(031.0)	-5.9	6.1	—	+2000	—	—	RNP APCH

IAF ONIFA

Serial Number	Path Descriptor	Waypoint Identifier	Fly-over	Course/Track °M(°T)	Magnetic Variation	Distance (NM)/ Time	Turn Direction	Altitude (FT)/ Flight level	Speed (KT)	VPA/TCH	Navigation Specification
001	IF	ONIFA	—	—	-5.9	—	—	+4000	-220	—	RNP APCH
002	TF	PA352	—	294(300.2)	-5.9	6.0	—	+2000	—	—	RNP APCH

IAF SOMPU

Serial Number	Path Descriptor	Waypoint Identifier	Fly-over	Course/Track °M(°T)	Magnetic Variation	Distance (NM)/ Time	Turn Direction	Altitude (FT)/ Flight level	Speed (KT)	VPA/TCH	Navigation Specification
001	IF	SOMPU	—	—	-5.9	—	—	+3500	-220	—	RNP APCH
002	TF	PA352	—	096(101.5)	-5.9	6.0	—	+2000	—	—	RNP APCH

001	IF	PA352	—	—	-5.9	—	—	+2000	—	—	RNP APCH
002	TF	PA351	—	007(012.71)	-5.9	4.10	—	@1700	—	—	RNP APCH
003	TF	RW01	Y	007(012.73)	-5.9	5.12	—	@83	—	-3.00/50	RNP APCH
004	DF	PA353	Y	—	-5.9	—	—	—	-210	—	RNP APCH
005	DF	SOMPU	—	—	-5.9	—	L	+3500	-220	—	RNP APCH
006	HM	SOMPU	—	096(101.5)	-5.9	1 min	R	+3500	-230	—	RNAV 1

WAYPOINT COORDINATES

FIX/POINTS	COORDINATES
SOMPU (IAF/MAHF)	55 50 04.5N 020 51 23.2E
LAPKO (IAF)	55 43 39.9N 020 56 15.3E
ONIFA (IAF)	55 45 51.4N 021 11 02.4E
PA352 (IF)	55 48 53.5N 021 01 49.1E
PA351 (FAF)	55 52 53.0N 021 03 25.0E
FAP	55 52 59.4N 021 03 27.5E
RW01 (MAPt)	55 57 51.9N 021 05 25.1E
PA353 (MATF)	56 00 18.0N 021 06 24.0E

Changes: VAR; MAG courses; coordinates of PA352, PA351, PA353 and FAP; HLDG SOMPU.

INSTRUMENT APPROACH CHART - ICAO	EGNOS CH 84388 E01A	AERODROME ELEV 33 HEIGHTS RELATED TO DTHR RWY 01 - ELEV 33	TWR 124.305 ATIS 127.805	PALANGA RNP RWY 01 (CAT A/B/C/D)
--	---------------------------	--	-----------------------------	--

**SBAS FAS Data Block
Input Data**

Parameters	Values
Operation	0
SBAS Provider Identifier	1
Airport Identifier	EYPA
Runway Number	01
Runway Letter	0
Approach Performance Designator	0
Route Indicator	
Reference Path Data Selector	0
Reference Path Identifier	E01A
LTP/FTP Latitude	555751.9300N
LTP/FTP Longitude	0210525.1135E
LTP/FTP Height above ellipsoid (meters)	34.6
FPAP Latitude	555859.0920N
Delta FPAP Latitude (seconds)	67.1620
FPAP Longitude	0210552.1745E
Delta FPAP Longitude (seconds)	27.0610
Approach Threshold Crossing Height (TCH)	50.0
Approach TCH Units Selector	0
Glidepath Angle (GPA)	3.00
Course Width at threshold (meters)	105.00
Length Offset (meters)	0
Horizontal Alert Limit (HAL) (meters)	40.0
Vertical Alert Limit (VAL) (meters)	50.0
Final Approach Segment CRC	4454A2B2

Output Data

Data Block	10 01 10 19 05 01 00 00 01 31 30 05 74 6F 04 18 F3 0C 0D 09 5A 15 B4 0C 02 6A D3 00 F4 01 2C 01 64 00 C8 FA 44 54 A2 B2
------------	--

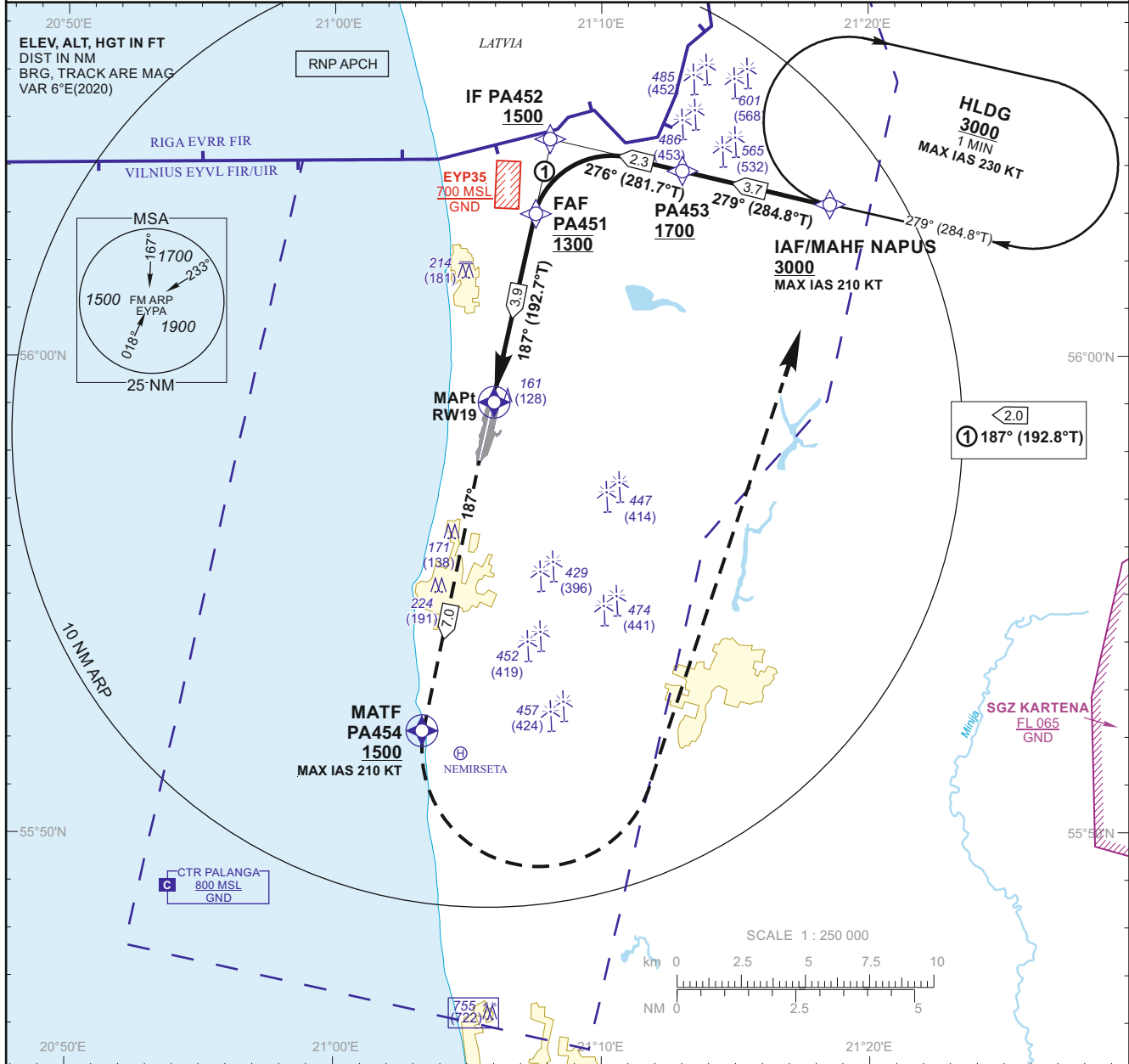
Required Additional Data (not CRC wrapped)

ICAO Code	EY
LTP/FTP Orthometric Height (meters)	10.0
FPAP Orthometric Height (meters)	9.7

Changes: LTP/FTP and FPAP coordinates; LTP/FTP Height above ellipsoid; Delta FPAP latitude and longitude; Final Approach Segment CRC; data block.

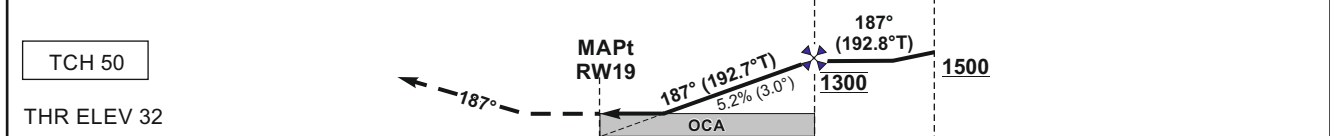
THIS PAGE INTENTIONALLY LEFT BLANK

INSTRUMENT APPROACH CHART - ICAO **AERODROME ELEV 33** **TWR 124.305** **ATIS 127.805** **PALANGA RNP (LNAV only) RWY 19 (CAT A/B/C/D)**
 HEIGHTS RELATED TO AD ELEV DTHR RWY 19 - ELEV 32



MISSED APPROACH TRANSITION ALT 5000

Climb on course 187° to PA454 [A1500+], then turn left [K210-], direct to NAPUS climbing to 3000.



NM to/from DTHR RWY 19	6	5	4	3	2	1	0	1	2	3	3.9	4	5	5.9	6	7	8	9	10	11	12
NM to/from DTHR RWY 19																					

OCA(OCH)		A	B	C	D	DIST TO RWY19	3	2					
STRAIGHT-IN APPROACH	LNAV	410 (380)				Altitude	1030	720					
CIRCLING		460 (430)	710 (680)	860 (820)	not authorized	Timing not authorized for defining the MAPt							
						GS	Kts	80	100	120	140	160	180
						FAF - MAPt 3.9 NM	min:sec	2:55	2:20	1:57	1:40	1:28	1:18
						Rate of descent (5.2%)	ft/min	415	520	625	730	835	940

For data tabulation see verso

Changes: VAR and date of VAR; MAG courses; MSA; lateral limits of SGZ Kartena; coordinates of PA453, PA452, PA451 and PA454; IF ALT; true and MAG courses of HLDG NAPUS.

INSTRUMENT
APPROACH
CHART - ICAO

AERODROME ELEV 33
HEIGHTS RELATED TO AD ELEV
DTHR RWY 19 - ELEV 32

TWR 124.305
ATIS 127.805

PALANGA
RNP (LNAV only) RWY 19
(CAT A/B/C/D)

TABULAR DESCRIPTION

IAF NAPUS											
Serial Number	Path Descriptor	Waypoint Identifier	Fly-over	Course/Track °M(°T)	Magnetic Variation	Distance (NM)/ Time	Turn Direction	Altitude (FT)/ Flight level	Speed (KT)	VPA/TCH	Navigation Specification
001	IF	NAPUS	—	—	-5.9	—	—	+3000	-210	—	RNP APCH
002	TF	PA453	—	279(284.8)	-5.9	3.7	—	+1700	—	—	RNP APCH
003	TF	PA452	—	276(281.7)	-5.9	2.3	—	+1500	—	—	RNP APCH
004	TF	PA451	—	187(192.8)	-5.9	2.0	—	@1300	—	—	RNP APCH
005	TF	RW19	Y	187(192.7)	-5.9	3.9	—	@410	—	-3.00/50	RNP APCH
006	CF	PA454	Y	187(192.7)	-5.9	7.0	—	+1500	-210	—	RNP APCH
007	DF	NAPUS	—	—	-5.9	—	L	+3000	-210	—	RNP APCH
008	HM	NAPUS	—	279(284.8)	-5.9	1 min	R	+3000	-230	—	RNAV 1

FIX/POINTS	COORDINATES
NAPUS (IAF/MAHF)	56 03 12.1N 021 18 32.7E
PA453	56 04 08.3N 021 12 13.2E
PA452 (IF)	56 04 36.6N 021 08 08.6E
PA451 (FAF)	56 02 39.6N 021 07 21.2E
RW19 (MAPt)	55 58 54.36N 021 05 50.27E
PA454 (MATF)	55 52 05.5N 021 03 05.9E

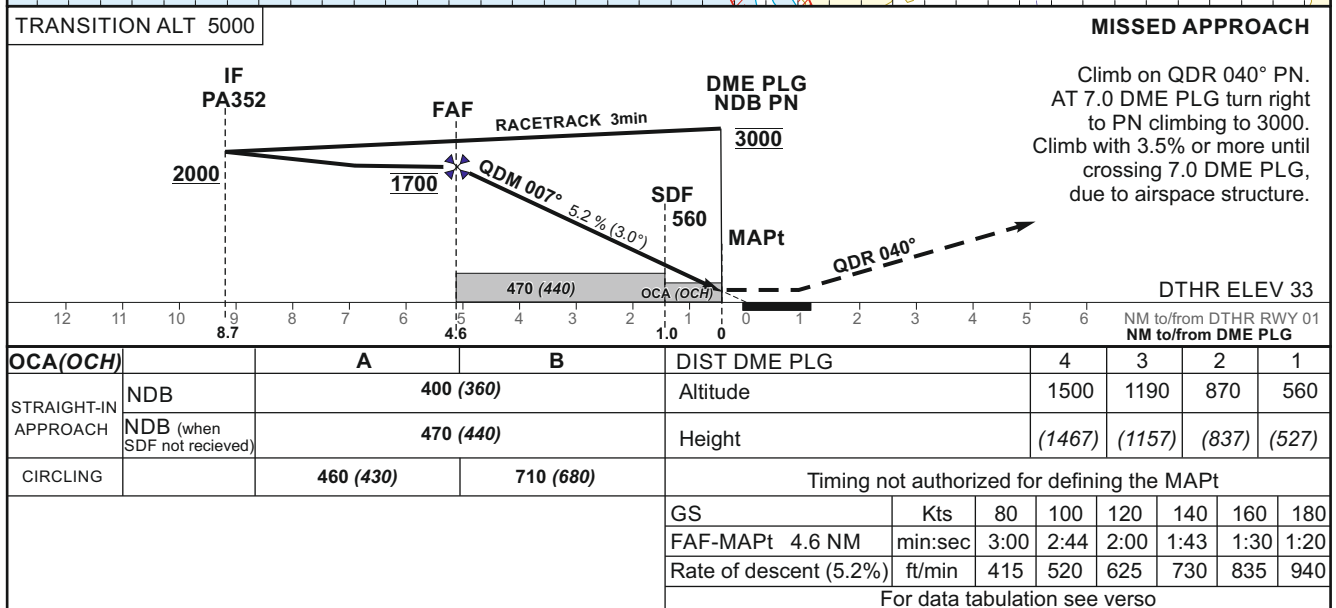
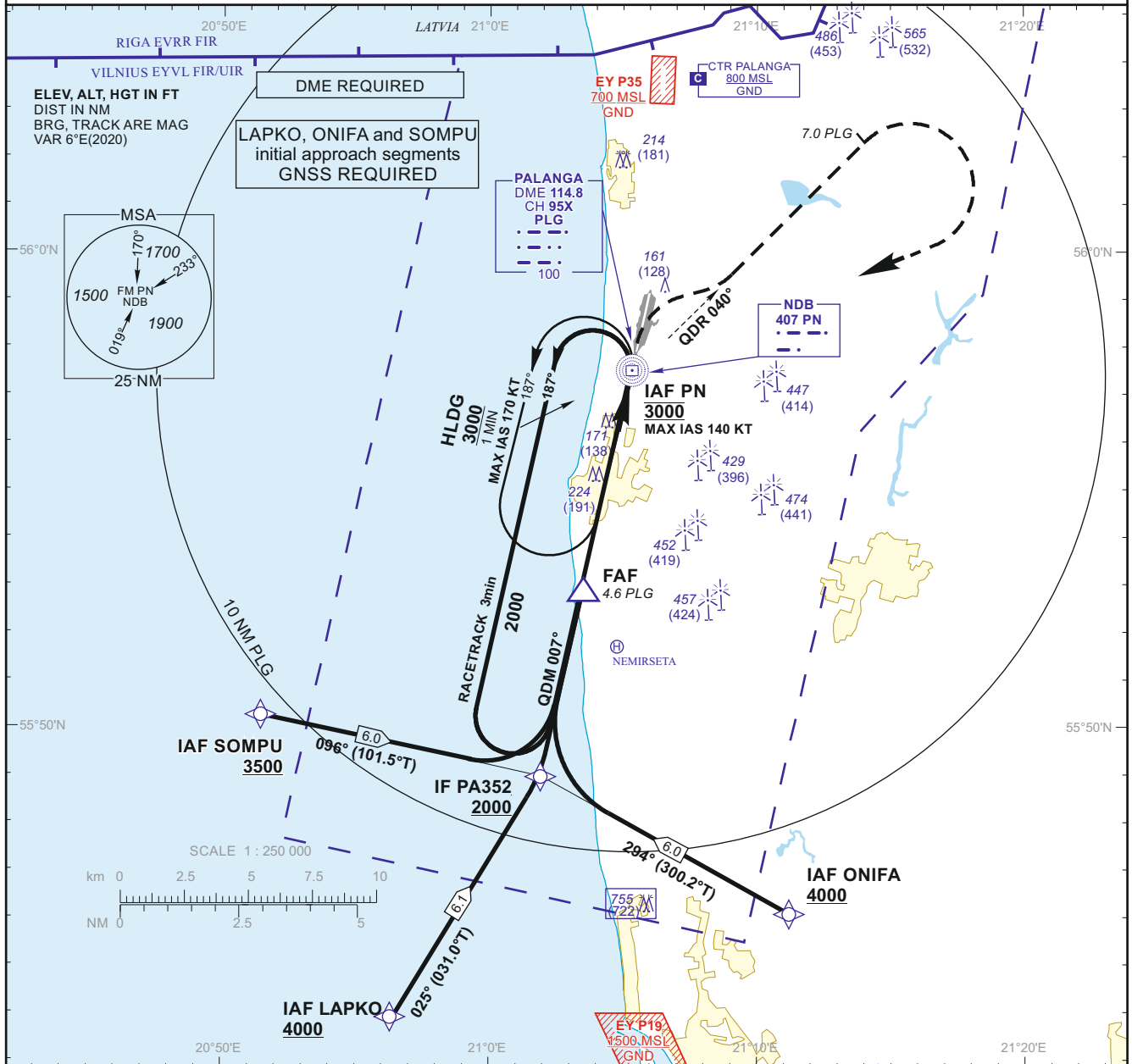
Changes: VAR; MAG courses; coordinates of PA453, PA452, PA451 and PA454.

**INSTRUMENT
APPROACH
CHART - ICAO**

AERODROME ELEV 33
HEIGHTS RELATED TO AD ELEV
DTHR RWY 01 - ELEV 33

TWR 124.305
ATIS 127.805

**PALANGA
NDB Z RWY 01
(CAT A/B)**



Changes: VAR and date of VAR; MAG courses; MSA; coordinates of PA352 and FAF; ALT of IAF SOMPU.

INSTRUMENT
APPROACH
CHART - ICAO

AERODROME ELEV 33
HEIGHTS RELATED TO AD ELEV
DTHR RWY 01 - ELEV 33

TWR 124.305
ATIS 127.805

PALANGA
NDB Z RWY 01
(CAT A/B)

TABULAR DESCRIPTION

IAF LAPKO, INITIAL APPROACH

Serial Number	Path Descriptor	Waypoint Identifier	Fly-over	Course/Track °M(°T)	Magnetic Variation	Distance (NM)/ Time	Turn Direction	Altitude (FT)/ Flight level	Speed (KT)	VPA/TCH	Navigation Specification
001	IF	LAPKO	—	—	-5.9	—	—	+4000	—	—	RNAV 1
002	TF	PA352	—	025(031.0)	-5.9	6.1	—	+2000	—	—	RNAV 1

IAF ONIFA, INITIAL APPROACH

Serial Number	Path Descriptor	Waypoint Identifier	Fly-over	Course/Track °M(°T)	Magnetic Variation	Distance (NM)/ Time	Turn Direction	Altitude (FT)/ Flight level	Speed (KT)	VPA/TCH	Navigation Specification
001	IF	ONIFA	—	—	-5.9	—	—	+4000	—	—	RNAV 1
002	TF	PA352	—	294(300.2)	-5.9	6.0	—	+2000	—	—	RNAV 1

IAF SOMPU, INITIAL APPROACH

Serial Number	Path Descriptor	Waypoint Identifier	Fly-over	Course/Track °M(°T)	Magnetic Variation	Distance (NM)/ Time	Turn Direction	Altitude (FT)/ Flight level	Speed (KT)	VPA/TCH	Navigation Specification
001	IF	SOMPU	—	—	-5.9	—	—	+3500	—	—	RNAV 1
002	TF	PA352	—	096(101.5)	-5.9	6.0	—	+2000	—	—	RNAV 1

NDB INSTRUMENT APPROACH from IAFs(PN, LAPKO, ONIFA, SOMPU)

FIX/POINTS	COORDINATES	FIX FORMATION
LAPKO (IAF)	55 43 39.9N 020 56 15.3E	BRG 014.38° PN ; 14.65 NM PLG
ONIFA (IAF)	55 45 51.4N 021 11 02.4E	BRG 338.24° PN ; 12.01 NM PLG
SOMPU (IAF)	55 50 04.5N 020 51 23.2E	BRG 040.98° PN ; 10.70 NM PLG
PA352 (IF)	55 48 53.5N 021 01 49.1E	BRG 006.85° PN ; 8.73 NM PLG
FAF	55 52 52.8N 021 03 24.9E	BRG 006.85° PN ; 4.63 NM PLG
SDF	55 56 24.9N 021 04 50.1E	BRG 006.85° PN ; 1.00 NM PLG
PN (MAPt, IAF)	55 57 23.1N 021 05 13.5E	
DTHR RWY 01	55 57 51.93N 021 05 25.11E	
DME PLG	55 57 23.5N 021 05 13.4E	
Final approach descent angle: 3.00°		

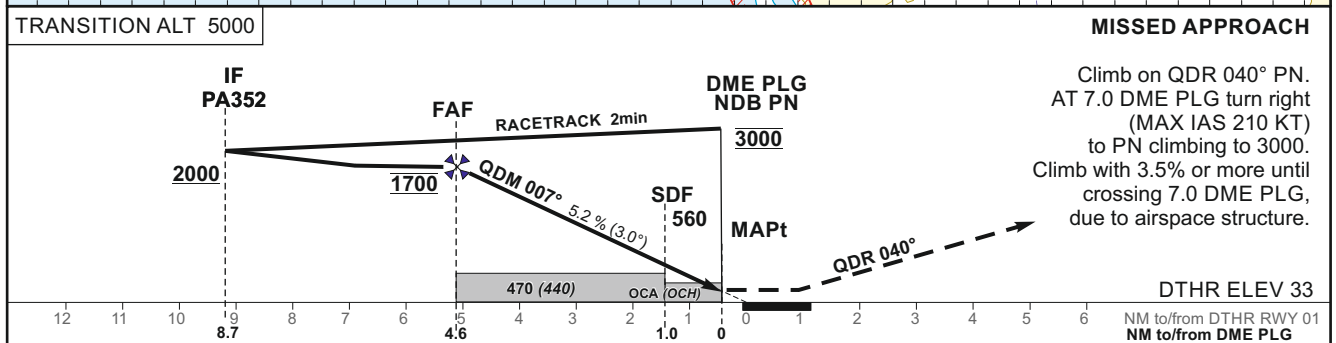
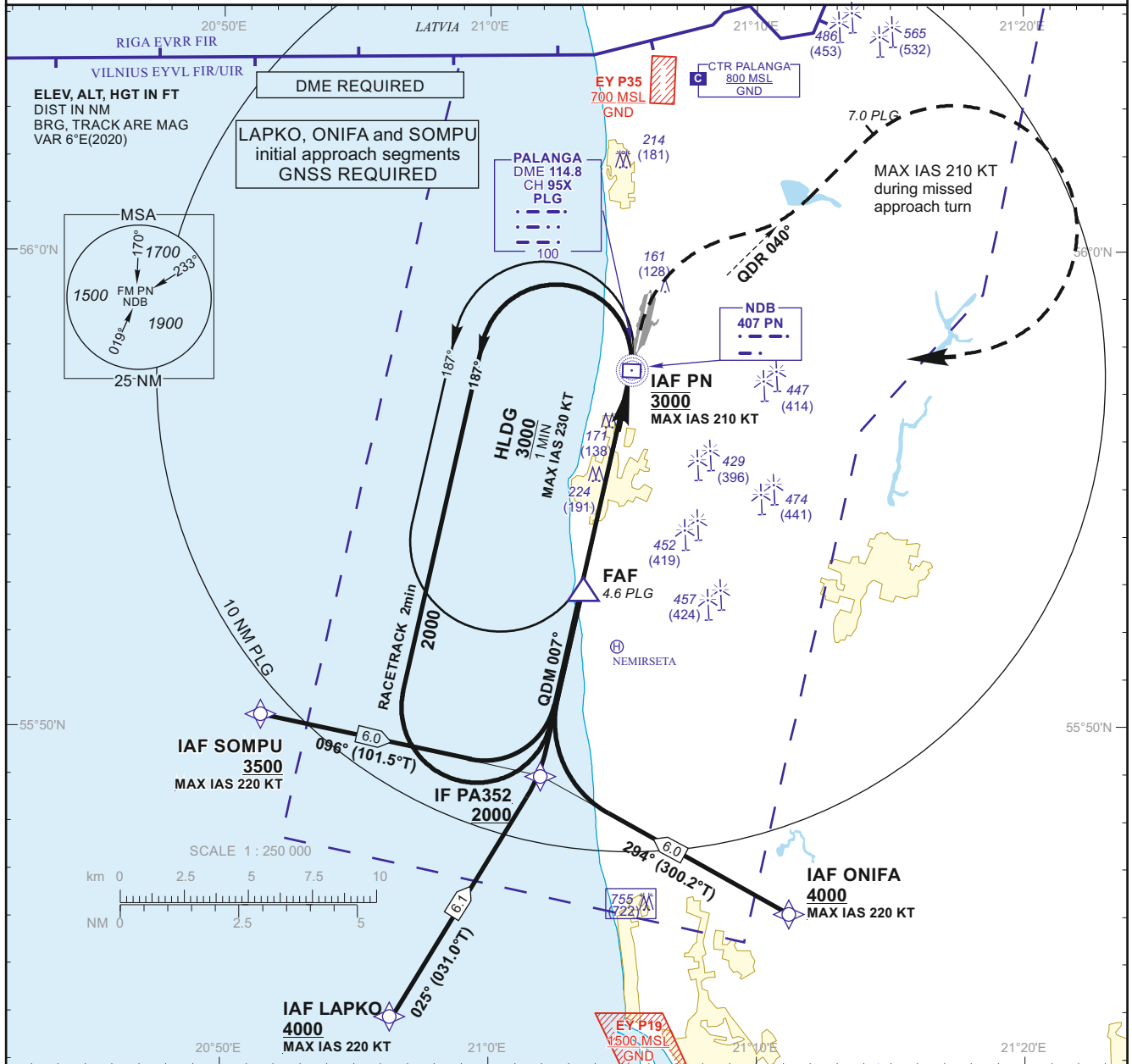
Changes: MAG courses; coordinates of PA352 and FAF; ALT of IAF SOMPU.

INSTRUMENT APPROACH CHART - ICAO

AERODROME ELEV 33
 HEIGHTS RELATED TO AD ELEV
 DTHR RWY 01 - ELEV 33

TWR 124.305
 ATIS 127.805

PALANGA NDB Y RWY 01 (CAT C/D)



OCA(OCH)	C	D	DIST DME PLG	4	3	2	1			
STRAIGHT-IN APPROACH	NDB	400 (360)	Altitude	1500	1190	870	560			
	NDB (when SDF not received)	470 (440)	Height	(1467)	(1157)	(837)	(527)			
CIRCLING	860 (820)	not authorized	Timing not authorized for defining the MAPt							
			GS	Kts	80	100	120	140	160	180
			FAF-MAPt 4.6 NM	min:sec	3:00	2:44	2:00	1:43	1:30	1:20
			Rate of descent (5.2%)	ft/min	415	520	625	730	835	940

For data tabulation see verso

Changes: VAR and date of VAR; MAG courses; MSA; coordinates of PA352 and FAF; ALT of IAF SOMPU.

INSTRUMENT
APPROACH
CHART - ICAO

AERODROME ELEV 33
HEIGHTS RELATED TO AD ELEV
DTHR RWY 01 - ELEV 33

TWR 124.305
ATIS 127.805

PALANGA
NDB Y RWY 01
(CAT C/D)

TABULAR DESCRIPTION

IAF LAPKO, INITIAL APPROACH

Serial Number	Path Descriptor	Waypoint Identifier	Fly-over	Course/Track °M(°T)	Magnetic Variation	Distance (NM)/ Time	Turn Direction	Altitude (FT)/ Flight level	Speed (KT)	VPA/TCH	Navigation Specification
001	IF	LAPKO	—	—	-5.9	—	—	+4000	-220	—	RNAV 1
002	TF	PA352	—	025(031.0)	-5.9	6.1	—	+2000	—	—	RNAV 1

IAF ONIFA, INITIAL APPROACH

Serial Number	Path Descriptor	Waypoint Identifier	Fly-over	Course/Track °M(°T)	Magnetic Variation	Distance (NM)/ Time	Turn Direction	Altitude (FT)/ Flight level	Speed (KT)	VPA/TCH	Navigation Specification
001	IF	ONIFA	—	—	-5.9	—	—	+4000	-220	—	RNAV 1
002	TF	PA352	—	294(300.2)	-5.9	6.0	—	+2000	—	—	RNAV 1

IAF SOMPU, INITIAL APPROACH

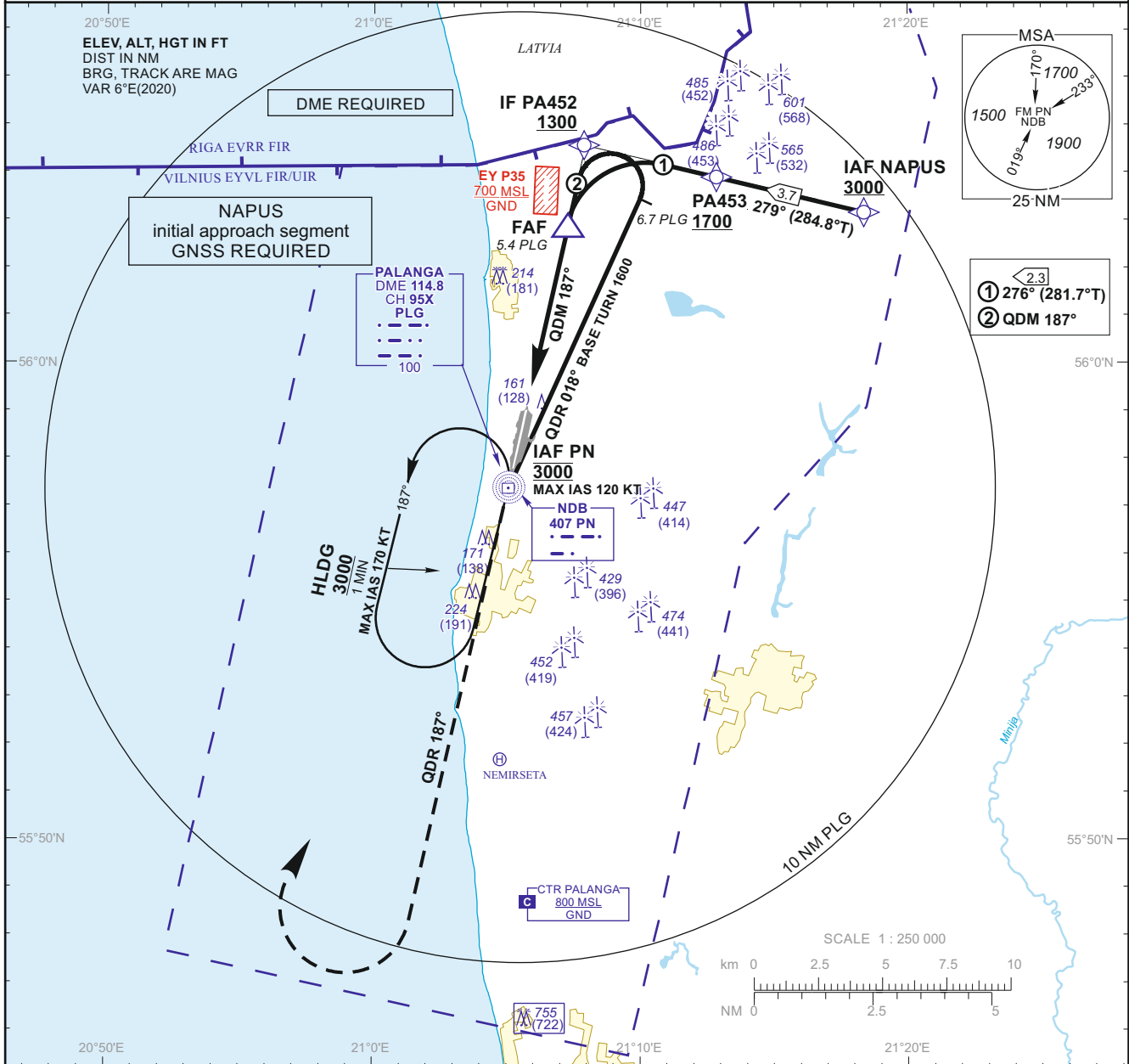
Serial Number	Path Descriptor	Waypoint Identifier	Fly-over	Course/Track °M(°T)	Magnetic Variation	Distance (NM)/ Time	Turn Direction	Altitude (FT)/ Flight level	Speed (KT)	VPA/TCH	Navigation Specification
001	IF	SOMPU	—	—	-5.9	—	—	+3500	-220	—	RNAV 1
002	TF	PA352	—	096(101.5)	-5.9	6.0	—	+2000	—	—	RNAV 1

NDB INSTRUMENT APPROACH from IAFs(PN, LAPKO, ONIFA, SOMPU)

FIX/POINTS	COORDINATES	FIX FORMATION
LAPKO (IAF)	55 43 39.9N 020 56 15.3E	BRG 014.38° PN ; 14.65 NM PLG
ONIFA (IAF)	55 45 51.4N 021 11 02.4E	BRG 338.24° PN ; 12.01 NM PLG
SOMPU (IAF)	55 50 04.5N 020 51 23.2E	BRG 040.98° PN ; 10.70 NM PLG
PA352 (IF)	55 48 53.5N 021 01 49.1E	BRG 006.85° PN ; 8.73 NM PLG
FAF	55 52 52.8N 021 03 24.9E	BRG 006.85° PN ; 4.63 NM PLG
SDF	55 56 24.9N 021 04 50.1E	BRG 006.85° PN ; 1.00 NM PLG
PN (MAPt, IAF)	55 57 23.1N 021 05 13.5E	
DTHR RWY 01	55 57 51.93N 021 05 25.11E	
DME PLG	55 57 23.5N 021 05 13.4E	
Final approach descent angle: 3.00°		

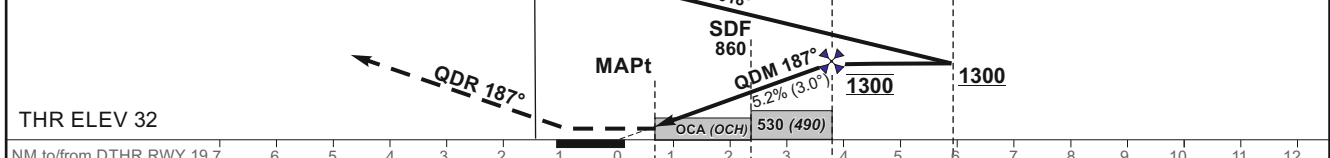
Changes: MAG courses; coordinates of PA352 and FAF; ALT of IAF SOMPU.

INSTRUMENT APPROACH CHART - ICAO **AERODROME ELEV 33** **TWR 124.305** **ATIS 127.805** **PALANGA NDB Z RWY 19 (CAT A/B)**
 HEIGHTS RELATED TO AD ELEV DTHR RWY 19 - ELEV 32



MISSED APPROACH TRANSITION ALT 5000

Climb via PN, then on QDR 187° PN to 1900, then turn right to PN climbing to 3000. Climb with 3.5% or more until passing 1900 due to airspace structure.



THR ELEV 32
 NM to/from DTHR RWY 19 7 6 5 4 3 2 1 0 1 2 3 4 5 6 7 8 9 10 11 12
 NM to/from DME PLG 0 2.3 4.0 5.4 7.4

OCA(OCH)	A	B	DIST DME PLG					
STRAIGHT-IN APPROACH	NDB	410 (380)	Altitude					
	NDB (when SDF not received)	530 (490)	Height					
CIRCLING	460 (430)	710 (680)	Timing not authorized for defining the MAPt					
	GS	Kts	80	100	120	140	160	180
	FAF - MAPt 3.1 NM	min:sec	2:19	1:52	1:33	1:20	1:10	1:02
	Rate of descent (5.2%)	ft/min	415	520	625	730	835	940

For data tabulation see verso

Changes: VAR and date of VAR; MAG courses; MSA; SOZ; Kartena withdrawn; coordinates of PA453 and PA452.

INSTRUMENT
APPROACH
CHART - ICAO

AERODROME ELEV 33
HEIGHTS RELATED TO AD ELEV
DTHR RWY 19 - ELEV 32

TWR 124.305
ATIS 127.805

PALANGA
NDB Z RWY 19
(CAT A/B)

TABULAR DESCRIPTION

IAF NAPUS, INITIAL APPROACH

Serial Number	Path Descriptor	Waypoint Identifier	Fly-over	Course/Track °M(°T)	Magnetic Variation	Distance (NM)/ Time	Turn Direction	Altitude (FT)/ Flight level	Speed (KT)	VPA/TCH	Navigation Specification
001	IF	NAPUS	—	—	-5.9	—	—	+3000	—	—	RNAV 1
002	TF	PA453	—	279(284.8)	-5.9	3.7	—	+1700	—	—	RNAV 1
003	TF	PA452	—	276(281.7)	-5.9	2.3	—	+1300	—	—	RNAV 1

NDB INSTRUMENT APPROACH from IAFs(PN, NAPUS)

FIX/POINTS	COORDINATES	FIX FORMATION
NAPUS (IAF)	56 03 12.1N 021 18 32.7E	BRG 226.10° PN ; 9.48 NM PLG
PN (IAF)	55 57 23.1N 021 05 13.5E	
PA453	56 04 08.3N 021 12 13.2E	BRG 204.20° PN ; 7.82 NM PLG
PA452 (IF)	56 04 36.6N 021 08 08.6E	BRG 186.85° PN ; 7.42 NM PLG
FAF	56 02 39.7N 021 07 21.3E	BRG 186.85° PN ; 5.41 NM PLG
SDF	56 01 18.4N 021 06 48.4E	BRG 186.85° PN ; 4.02 NM PLG
MAPt	55 59 35.2N 021 06 06.8E	BRG 186.85° PN ; 2.25 NM PLG
DTHR RWY 19	55 58 54.36N 021 05 50.27E	
DME PLG	55 57 23.5N 021 05 13.4E	
Final approach descent angle: 3.00°		

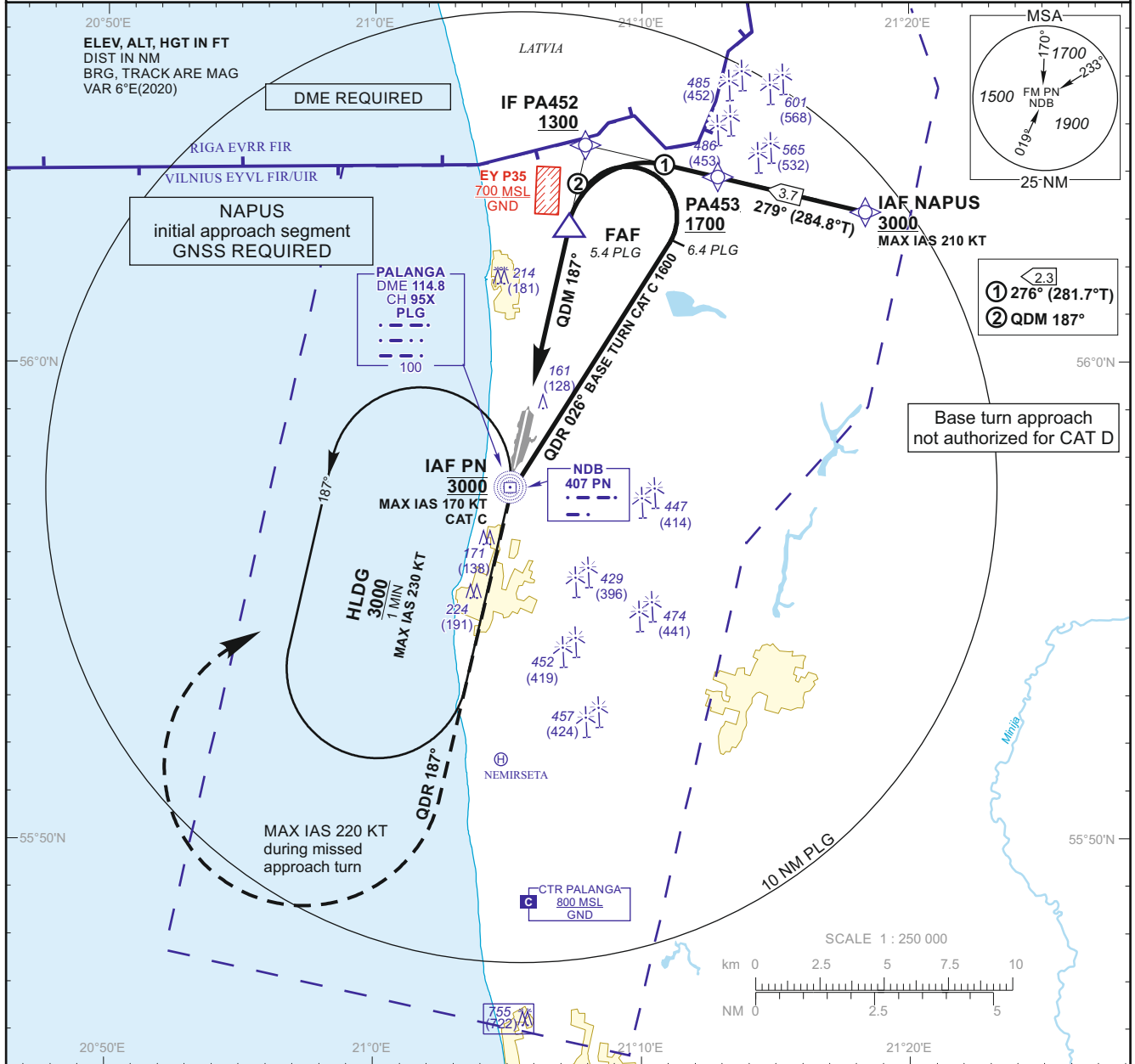
Changes: MAG courses; coordinates of PA453 and PA452.

**INSTRUMENT
APPROACH
CHART - ICAO**

AERODROME ELEV 33
HEIGHTS RELATED TO AD ELEV
DTHR RWY 19 - ELEV 32

TWR 124.305
ATIS 127.805

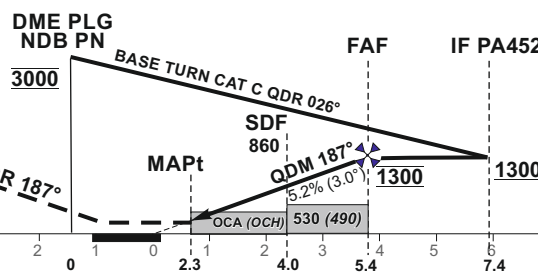
**PALANGA
NDB Y RWY 19
(CAT C/D)**



MISSED APPROACH

TRANSITION ALT 5000

Climb via PN, then on QDR 187° PN to 1900, then turn right (MAX IAS 220 KT) to PN climbing to 3000. Climb with 3.5% or more until passing 1900 due to airspace structure.



THR ELEV 32

NM to/from DTHR RWY 19	7	6	5	4	3	2	1	0	0	1	2	3	4	5	6	7	8	9	10	11	12
NM to/from DME PLG								0	2.3	4.0	5.4	7.4									

OCA(OCH)		C	D	DIST DME PLG	5	4	3	
STRAIGHT-IN APPROACH	NDB	410 (380)		Altitude	1170	860	540	
	NDB (when SDF not received)	530 (490)		Height	(1137)	(827)	(507)	
CIRCLING		860 (820)	not authorized	Timing not authorized for defining the MAPt				
	GS	Kts	80	100	120	140	160	180
	FAF - MAPt 3.1 NM	min:sec	2:19	1:52	1:33	1:20	1:10	1:02
	Rate of descent (5.2%)	ft/min	415	520	625	730	835	940

For data tabulation see verso

Changes: VAR and date of VAR; MAG courses; MSA; SQZ Kartena withdrawn; coordinates of PA453 and PA452.

INSTRUMENT
APPROACH
CHART - ICAO

AERODROME ELEV 33
HEIGHTS RELATED TO AD ELEV
DTHR RWY 19 - ELEV 32

TWR 124.305
ATIS 127.805

PALANGA
NDB Y RWY 19
(CAT C/D)

TABULAR DESCRIPTION

IAF NAPUS, INITIAL APPROACH

Serial Number	Path Descriptor	Waypoint Identifier	Fly-over	Course/Track °M(°T)	Magnetic Variation	Distance (NM)/ Time	Turn Direction	Altitude (FT)/ Flight level	Speed (KT)	VPA/TCH	Navigation Specification
001	IF	NAPUS	—	—	-5.9	—	—	+3000	-210	—	RNAV 1
002	TF	PA453	—	279(284.8)	-5.9	3.7	—	+1700	—	—	RNAV 1
003	TF	PA452	—	276(281.7)	-5.9	2.3	—	+1300	—	—	RNAV 1

NDB INSTRUMENT APPROACH from IAFs(PN, NAPUS)

FIX/POINTS	COORDINATES	FIX FORMATION
NAPUS (IAF)	56 03 12.1N 021 18 32.7E	BRG 226.10° PN ; 9.48 NM PLG
PN (IAF)	55 57 23.1N 021 05 13.5E	
PA453	56 04 08.3N 021 12 13.2E	BRG 204.20° PN ; 7.82 NM PLG
PA452 (IF)	56 04 36.6N 021 08 08.6E	BRG 186.85° PN ; 7.42 NM PLG
FAF	56 02 39.7N 021 07 21.3E	BRG 186.85° PN ; 5.41 NM PLG
SDF	56 01 18.4N 021 06 48.4E	BRG 186.85° PN ; 4.02 NM PLG
MAPt	55 59 35.2N 021 06 06.8E	BRG 186.85° PN ; 2.25 NM PLG
DTHR RWY 19	55 58 54.36N 021 05 50.27E	
DME PLG	55 57 23.5N 021 05 13.4E	
Final approach descent angle: 3.00°		

Changes: MAG courses; coordinates of PA453 and PA452.

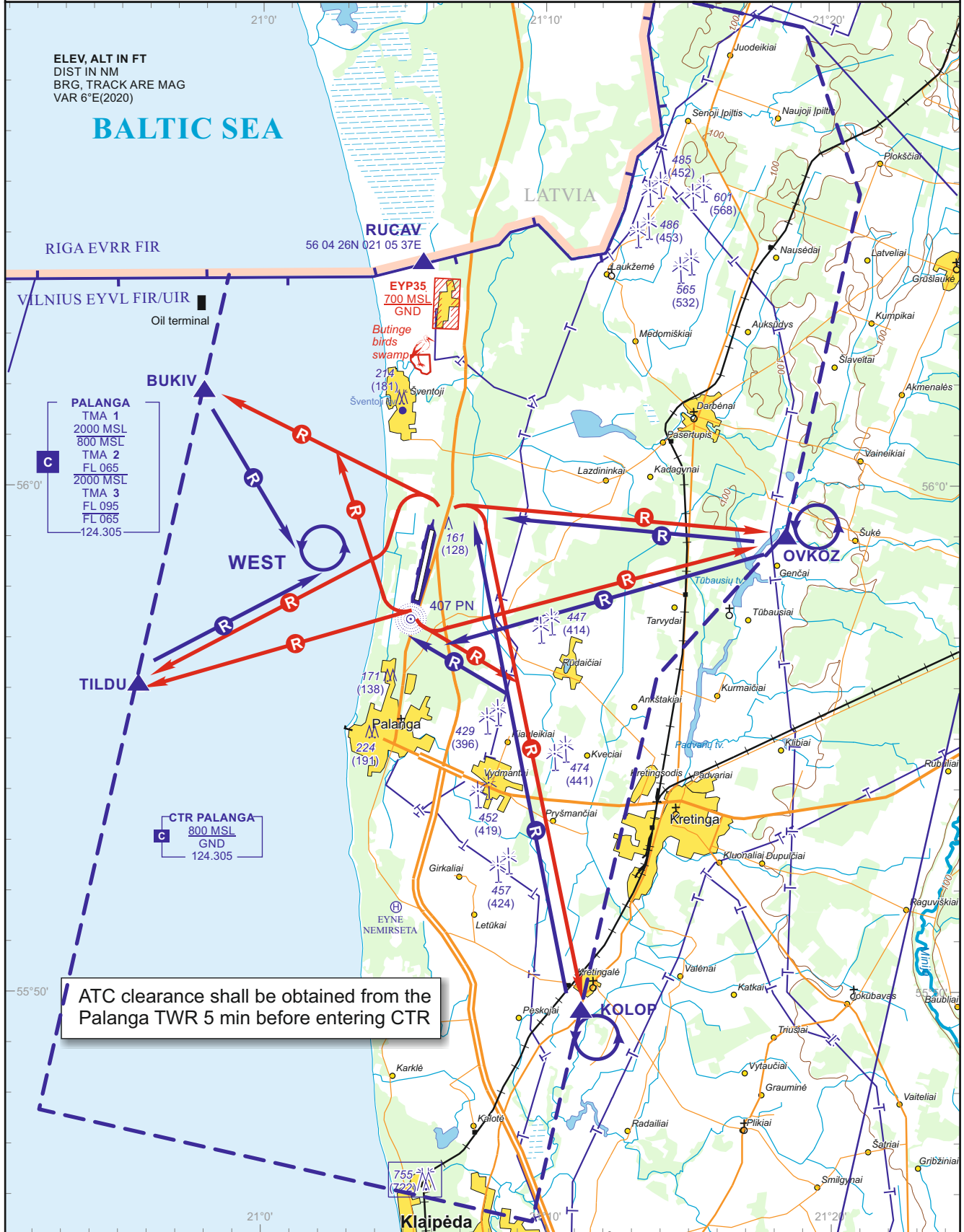
VISUAL APPROACH
CHART - ICAO
TRANSITION LEVEL By ATC
TRANSITION ALT 5000

AERODROME ELEV 33

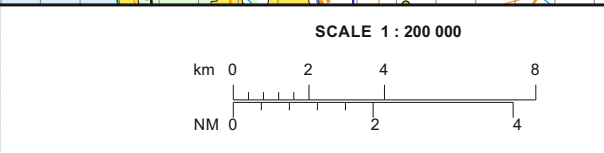
HEIGHTS RELATED TO AD ELEV

TWR 124.305
ATIS 127.805
INFO 125.730

PALANGA
RWY 01/19



CTR REP		
BUKIV	R-328/D21.2 KLP	56 01 53N 020 57 54E
KOLOP	R-338/D7.0 KLP	55 49 38N 021 11 11E
OVKOZ	R-002/D16.3 KLP	55 59 06N 021 18 27E
TILDU	R-315/D17.0 KLP	55 56 05N 020 55 36E



PAPI(MEHT)	
RWY 01:	Left 3.0° (52 FT)
RWY 19:	Left 3.0° (60 FT)

Changes: INFO FREQ.

THIS PAGE INTENTIONALLY LEFT BLANK