

EYSA Charts

Aerodrome Chart

Aerodrome Ground Movement and Parking Chart

Aerodrome Obstacle Chart (Type A)

ATC Surveillance Minimum Altitude Chart

Instrument Approach Chart - ICAO ILS or LOC RWY 14L (CAT A/B/C/D)

Instrument Approach Chart - ICAO ILS or LOC RWY 32R (CAT A/B/C/D)

Instrument Approach Chart - ICAO RNP (LNAV only) RWY 14L (CAT A/B/C/D)

Instrument Approach Chart - ICAO RNP (LNAV only) RWY 32R (CAT A/B/C/D)

Instrument Approach Chart - ICAO VOR RWY 14L (CAT A/B/C/D)

Instrument Approach Chart - ICAO VOR RWY 32R (CAT A/B/C/D)

Visual Circling Approach Chart RWY 14L/32R, RWY 14R/32L

Visual Approach Chart - ICAO RWY 14L/32R

Instrument Approach Chart for Military ACFT – ILS Z or LOC Z RWY 14L (MIL)

Instrument Approach Chart for Military ACFT – ILS Z or LOC Z RWY 32R (MIL)

Instrument Approach Chart for Military ACFT – ILS Y or LOC Y RWY 14L (MIL)

Instrument Approach Chart for Military ACFT – ILS Y or LOC Y RWY 32R (MIL)

Instrument Approach Chart for Military ACFT – TACAN RWY 14L (MIL)

Instrument Approach Chart for Military ACFT – TACAN RWY 32R (MIL)

Instrument Approach Chart for Military ACFT – VOR RWY 14R (MIL)

Instrument Approach Chart for Military ACFT – VOR RWY 32L (MIL)

Instrument Approach Chart for Military ACFT – TACAN RWY 14R (MIL)

Instrument Approach Chart for Military ACFT – TACAN RWY 32L (MIL)

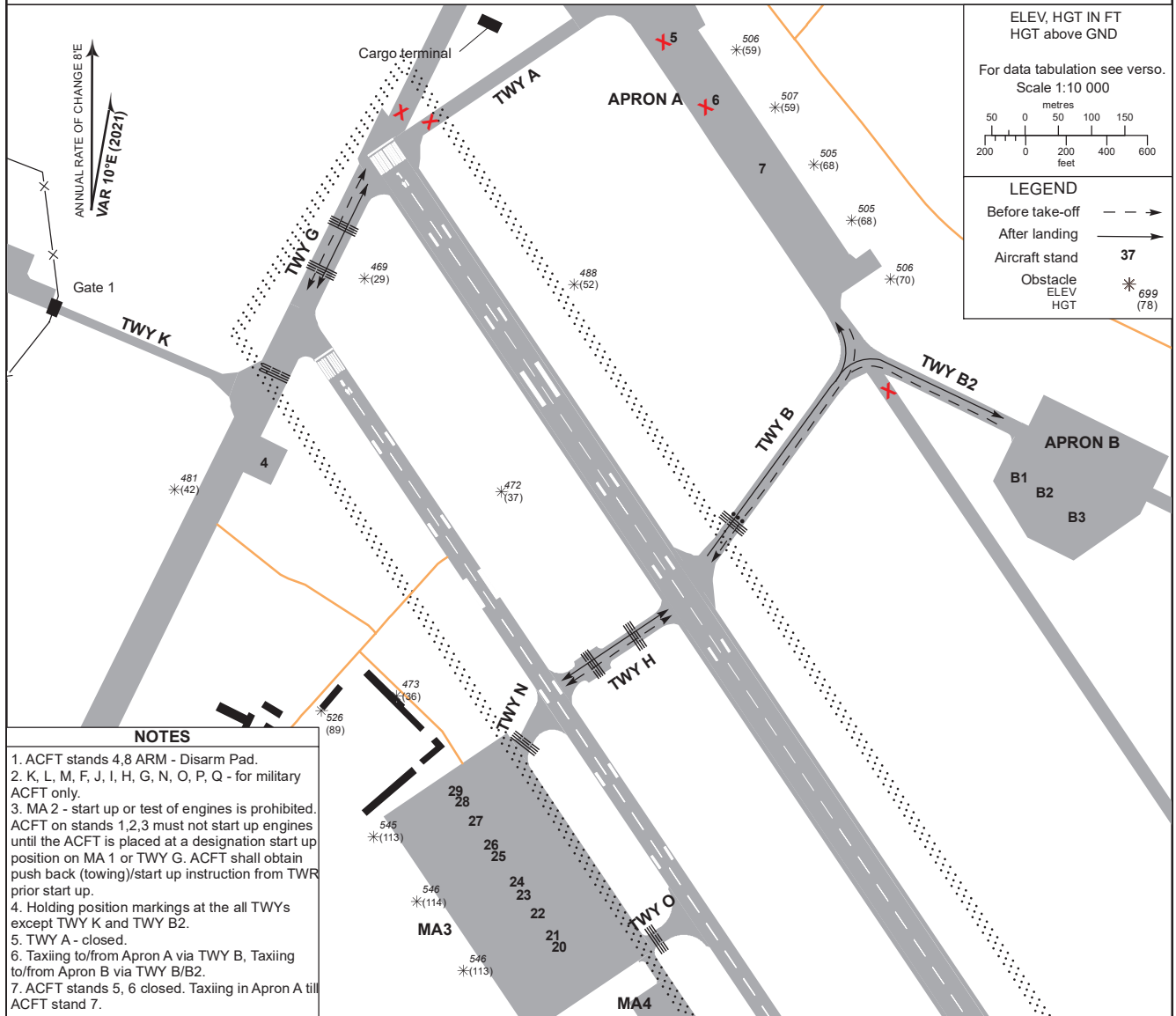
THIS PAGE INTENTIONALLY LEFT BLANK

AERODROME GROUND MOVEMENT AND PARKING CHART - ICAO

APRON ELEV 447

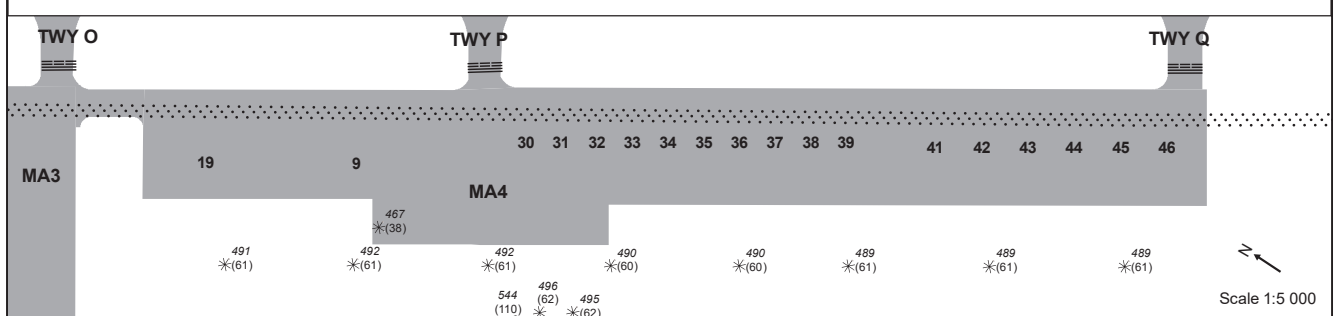
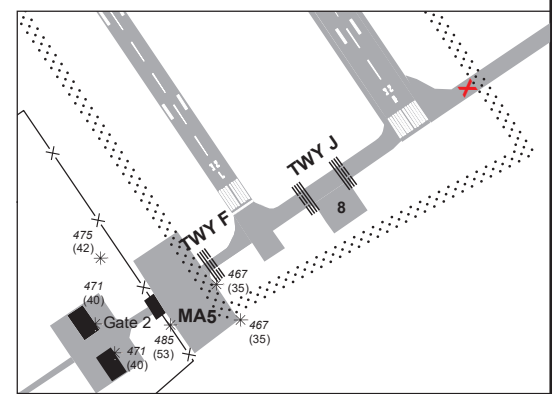
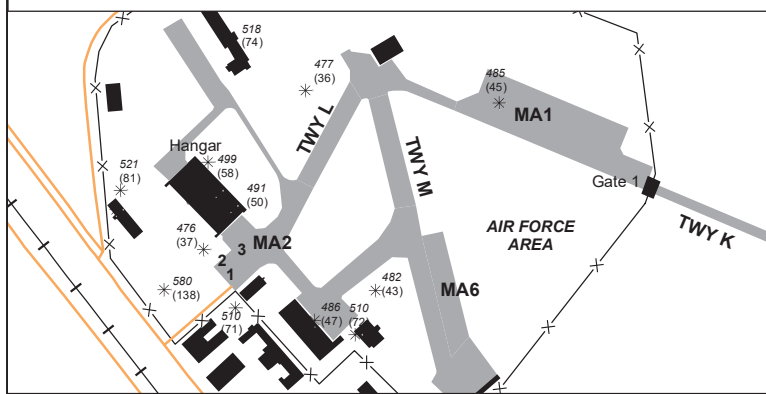
TWR 120.405
ATIS 120.755

ŠIAULIAI



NOTES

1. ACFT stands 4,8 ARM - Disarm Pad.
2. K, L, M, F, J, I, H, G, N, O, P, Q - for military ACFT only.
3. MA 2 - start up or test of engines is prohibited. ACFT on stands 1,2,3 must not start up engines until the ACFT is placed at a designation start up position on MA 1 or TWY G. ACFT shall obtain push back (towing)/start up instruction from TWR prior start up.
4. Holding position markings at the all TWYs except TWY K and TWY B2.
5. TWY A - closed.
6. Taxiing to/from Apron A via TWY B, Taxiing to/from Apron B via TWY B/B2.
7. ACFT stands 5, 6 closed. Taxiing in Apron A till ACFT stand 7.



Changes: page 2.

AERONAUTICAL DATA TABULATION

ACFT STANDS									
Stand	Coordinates			Bearing Strength	Stand	Coordinates			Bearing Strength
1	55 54 13.40N	023 21 45.60E		120/R/D/W/T	30	55 53 37.22N	023 23 17.16E		50/R/C/W/T
2	55 54 14.00N	023 21 45.00E		120/R/D/W/T	31	55 53 36.59N	023 23 17.92E		50/R/C/W/T
3	55 54 14.50N	023 21 46.50E		120/R/C/W/T	32	55 53 35.96N	023 23 18.67E		50/R/C/W/T
4	55 54 09.70N	023 22 36.20E		98/R/D/W/T	33	55 53 35.33N	023 23 19.42E		50/R/C/W/T
5	55 54 30.09N	023 23 10.34E		120/R/C/W/T	34	55 53 34.70N	023 23 20.18E		50/R/C/W/T
6	55 54 25.77N	023 23 13.94E		120/R/C/W/T	35	55 53 34.07N	023 23 20.94E		50/R/C/W/T
7	55 54 21.74N	023 23 18.72E		120/R/C/W/T	36	55 53 33.43N	023 23 21.69E		50/R/C/W/T
8	55 52 47.90N	023 24 32.30E		120/R/D/W/T	37	55 53 32.80N	023 23 22.45E		50/R/C/W/T
9	55 53 39.97N	023 23 12.89E		120/R/D/W/T	38	55 53 32.17N	023 23 23.20E		50/R/C/W/T
19	55 53 42.50N	023 23 09.86E		120/R/D/W/T	39	55 53 31.54N	023 23 23.95E		50/R/C/W/T
20	55 53 46.21N	023 23 01.14E		120/R/D/W/T	41	55 53 29.91N	023 23 25.71E		50/R/C/W/T
21	55 53 46.59N	023 23 00.69E		120/R/D/W/T	42	55 53 29.09N	023 23 26.69E		50/R/C/W/T
22	55 53 47.70N	023 22 59.37E		120/R/D/W/T	43	55 53 28.26N	023 23 27.67E		50/R/C/W/T
23	55 53 48.81N	023 22 58.03E		120/R/D/W/T	44	55 53 27.44N	023 23 28.65E		50/R/C/W/T
24	55 53 49.19N	023 22 57.59E		120/R/D/W/T	45	55 53 26.62N	023 23 29.64E		50/R/C/W/T
25	55 53 50.67N	023 22 55.81E		120/R/D/W/T	46	55 53 25.79N	023 23 30.62E		50/R/C/W/T
26	55 53 51.04N	023 22 55.37E		120/R/D/W/T	B1	55 54 08.80N	023 23 41.00E		45/R/A/W/T
27	55 53 52.16N	023 22 54.04E		120/R/D/W/T	B2	55 54 08.10N	023 23 43.20E		45/R/A/W/T
28	55 53 53.27N	023 22 52.71E		120/R/D/W/T	B3	55 54 06.90N	023 23 46.00E		54/R/A/W/T
29	55 53 53.65N	023 22 52.26E		120/R/D/W/T					

Stand	Dimensions M (FT)	
4	54x44	(177x144)
8	54x48	(177x157)

APRONS			
Apron	Dimensions M (FT)	Bearing Strength	Surface
APRON A	500x75 (1640x246)	120/R/C/W/T	Concrete
APRON B	-	59/F/A/W/T	Asphalt-Concrete
MA 1	200x55 (656x180)	37/R/C/W/U	Concrete
MA 2	70x35 (230x115)	120/R/C/W/T	Concrete
MA 3	393x223 (1289x732)	120/R/D/W/T	Concrete
MA 4	697x71 (2287x233)	50/R/C/W/T	Concrete
MA 5	70x50 (230x164) 2 parking areas	66/R/D/W/T	Concrete
MA 6	-	65/F/D/X/T	Asphalt-Concrete

TAXIWAYS				
TWY	Width M (FT)	Bearing Strength	Surface	Centre Line Points
A	21 (69)	120/R/C/W/T	Concrete	55 54 30.90N 023 23 03.00E 55 54 28.80N 023 22 57.40E 55 54 25.30N 023 22 48.20E
B	23 (76)	59/F/A/W/T	Asphalt	55 54 04.00N 023 23 13.00E 55 54 08.90N 023 23 19.40E 55 54 13.90N 023 23 25.80E 55 54 15.90N 023 23 26.20E 55 54 16.80N 023 23 25.00E
B2	23 (76)	59/F/A/W/T	Asphalt	55 54 14.30N 023 23 29.30E 55 54 12.70N 023 23 35.10E 55 54 11.20N 023 23 40.90E
F	12 (39)	96/R/C/W/T	Asphalt	55 52 45.10N 023 24 23.00E 55 52 45.60N 023 24 24.20E 55 52 46.20N 023 24 25.70E
G	24 (79)	120/R/C/W/T	Asphalt-Concrete	55 54 13.90N 023 22 36.70E 55 54 17.40N 023 22 39.90E 55 54 22.90N 023 22 44.80E
H	24 (79)	110/R/C/W/T	Asphalt	55 53 58.70N 023 23 01.50E 55 54 00.70N 023 23 06.80E 55 54 02.30N 023 23 11.10E
I	14 (46)	120/R/C/W/T	Asphalt	55 53 00.60N 023 24 11.00E 55 53 02.40N 023 24 15.70E 55 53 04.10N 023 24 20.10E
J	22 (72)	70/R/C/W/T	Asphalt	55 52 47.00N 023 24 27.70E 55 52 48.50N 023 24 31.50E 55 52 50.30N 023 24 36.30E
K	12 (39)	74/R/C/W/T	Asphalt	55 54 21.50N 023 21 58.30E 55 54 17.80N 023 22 14.50E 55 54 13.00N 023 22 34.50E
L	12 (39)	120/R/C/W/T	Asphalt	55 54 21.10N 023 21 55.70E 55 54 17.50N 023 21 52.00E 55 54 14.70N 023 21 49.30E
M	23 (76)	65/F/D/X/T	Asphalt	55 54 20.80N 023 21 56.90E 55 54 15.10N 023 21 59.50E 55 54 10.00N 023 22 01.80E
N	23 (76)	120/R/B/W/T	Asphalt	55 53 56.00N 023 22 58.40E 55 53 56.80N 023 22 59.20E 55 53 57.80N 023 23 00.00E
O	23 (76)	120/R/B/W/T	Asphalt	55 53 46.30N 023 23 09.60E 55 53 46.90N 023 23 11.20E 55 53 39.40N 023 23 20.30E
P	23 (76)	50/R/C/W/T	Concrete	55 53 38.60N 023 23 18.20E 55 53 39.00N 023 23 19.20E 55 53 39.40N 023 23 20.30E
Q	23 (76)	50/R/C/W/T	Concrete	55 53 26.20N 023 23 33.10E 55 53 26.60N 023 23 34.10E 55 53 27.00N 023 23 35.40E

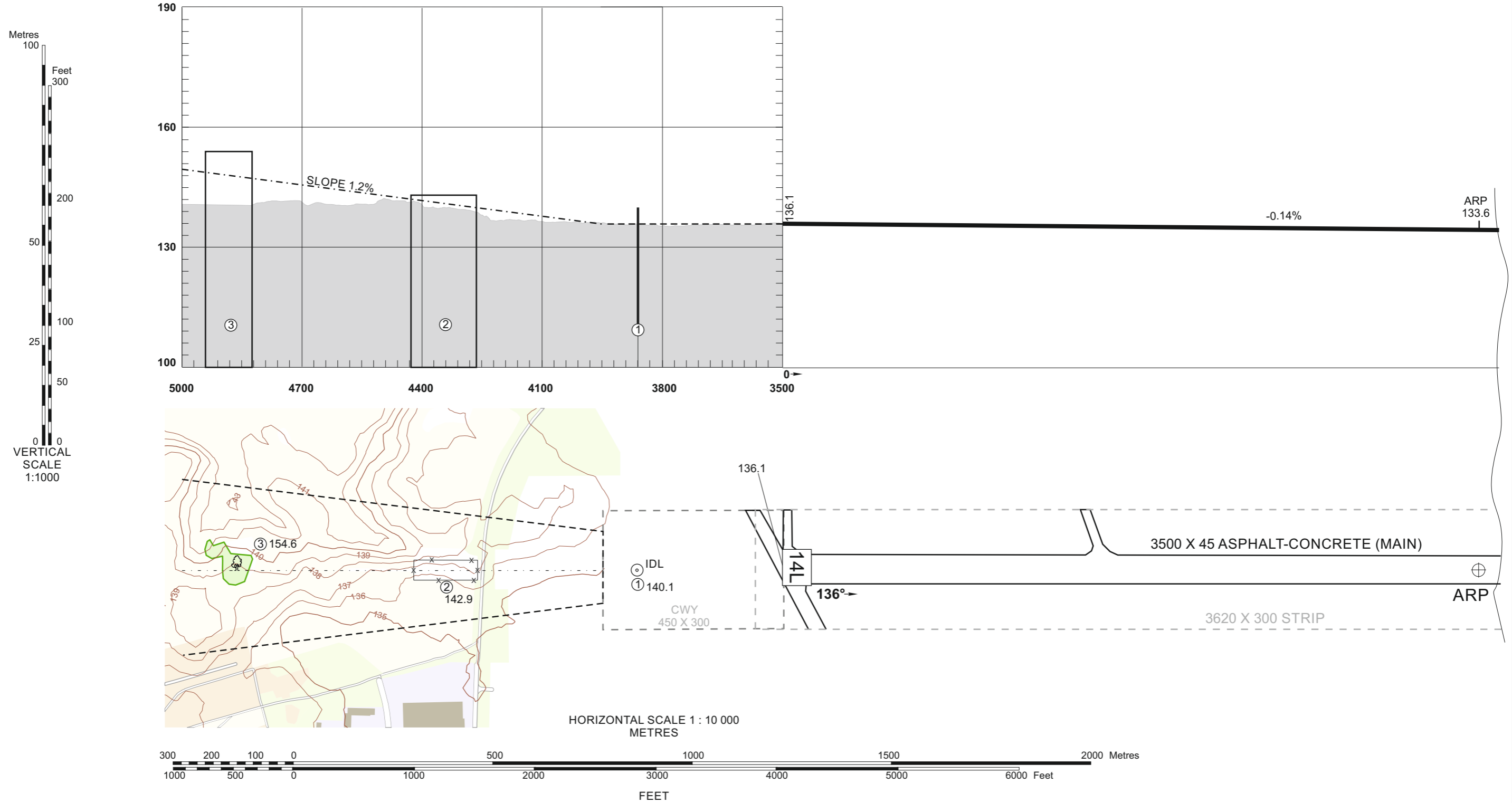
Changes: TWY B surface.

AERODROME OBSTACLE CHART - ICAO
TYPE A (OPERATING LIMITATIONS)

ŠIAULIAI
RWY 14L

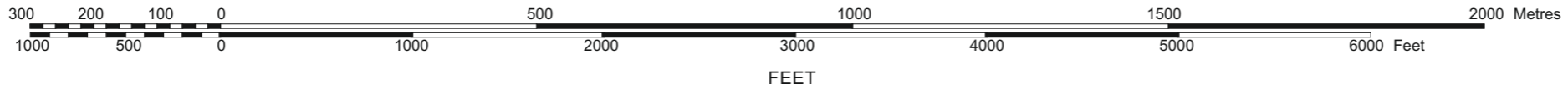
MAGNETIC VARIATION 10° E - 2021
 DIMENSIONS AND ELEVATIONS IN METRES
 ORDER OF ACCURACY
 HORIZONTAL 0.5M
 VERTICAL 0.1M

DECLARED DISTANCES	
3500	TAKE - OFF RUN AVAILABLE
3950	TAKE - OFF DISTANCE AVAILABLE
3500	ACCELERATE STOP DISTANCE AVAILABLE
3500	LANDING DISTANCE AVAILABLE



Changes: Horizontal accuracy.

HORIZONTAL SCALE 1 : 10 000
 METRES



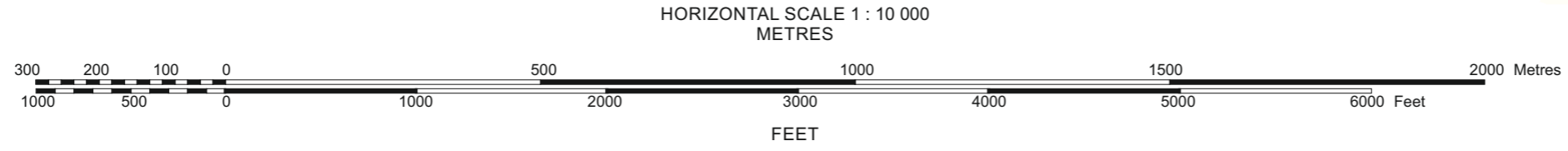
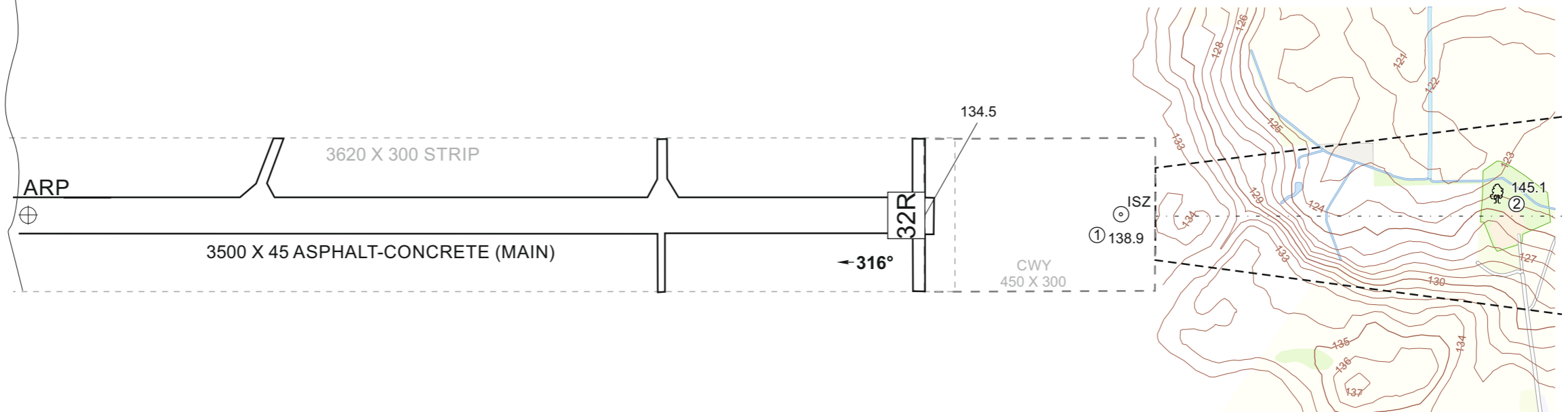
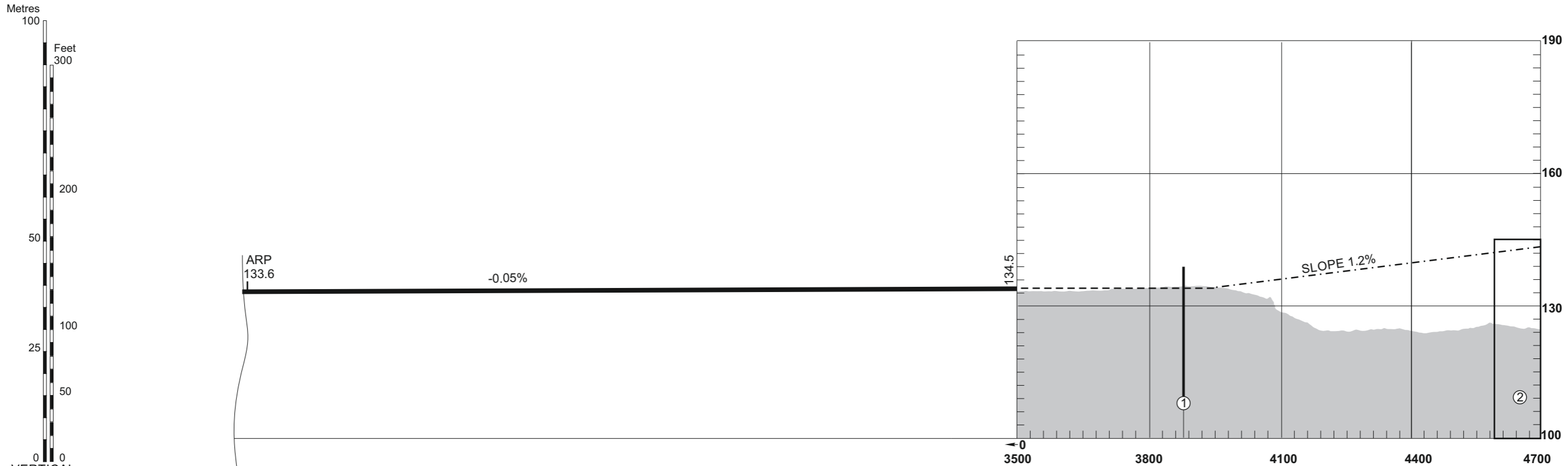
LEGEND See GEN 2.3

AERODROME OBSTACLE CHART - ICAO TYPE A (OPERATING LIMITATIONS)

ŠIAULIAI
RWY 32R

MAGNETIC VARIATION 10° E - 2021
DIMENSIONS AND ELEVATIONS IN METRES
ORDER OF ACCURACY
HORIZONTAL 0.5M
VERTICAL 0.1M

DECLARED DISTANCES	
3500	TAKE - OFF RUN AVAILABLE
3950	TAKE - OFF DISTANCE AVAILABLE
3500	ACCELERATE STOP DISTANCE AVAILABLE
3500	LANDING DISTANCE AVAILABLE



LEGEND See GEN 2.3

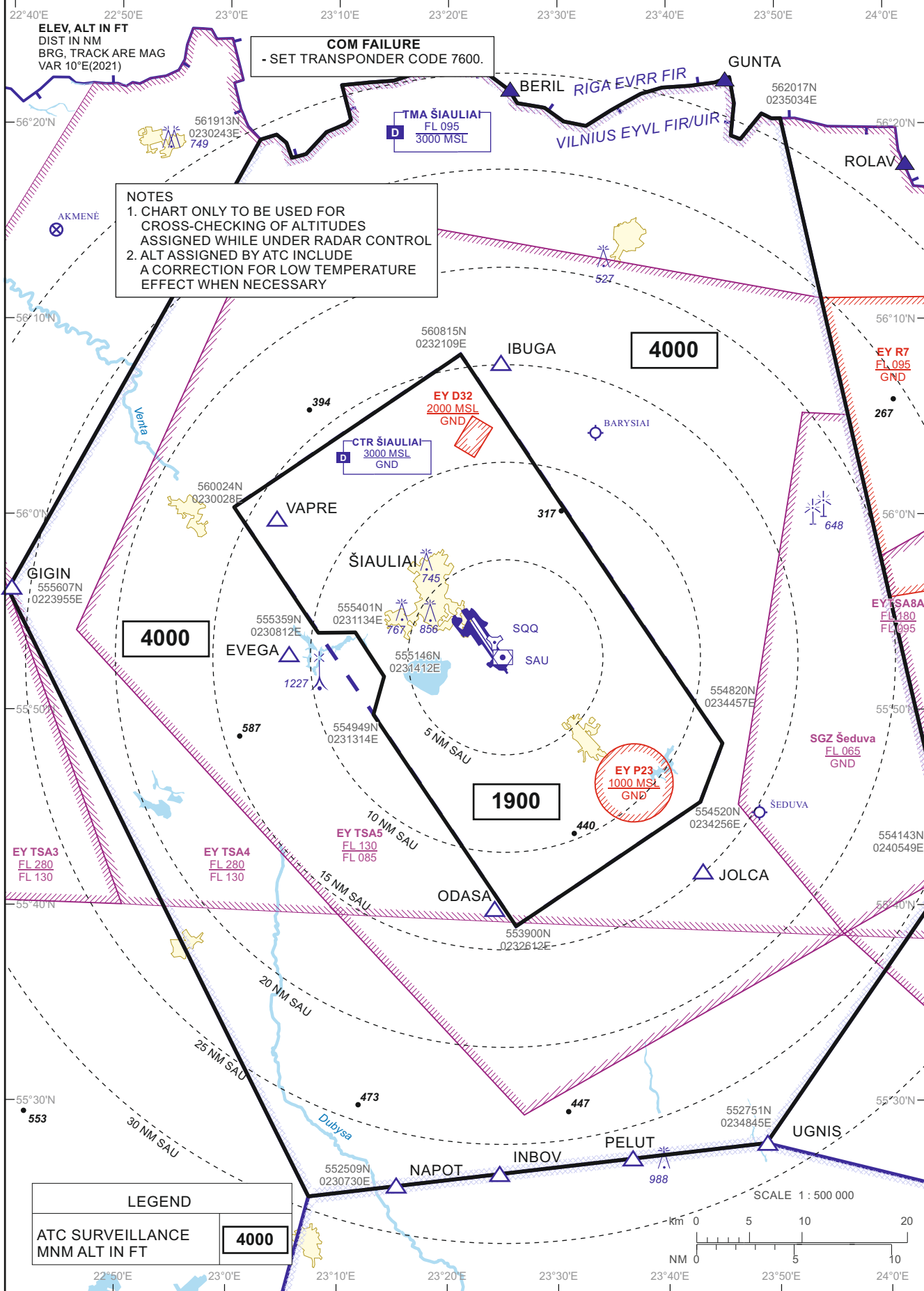
ATC SURVEILLANCE MINIMUM ALTITUDE CHART — ICAO

AERODROME ELEV 447

TWR 120.405
ATIS 120.755

ŠIAULIAI

TRANSITION ALT 5000



NOTES

1. CHART ONLY TO BE USED FOR CROSS-CHECKING OF ALTITUDES ASSIGNED WHILE UNDER RADAR CONTROL
2. ALT ASSIGNED BY ATC INCLUDE A CORRECTION FOR LOW TEMPERATURE EFFECT WHEN NECESSARY

COM FAILURE
- SET TRANSPONDER CODE 7600.

4000

4000

1900

LEGEND

ATC SURVEILLANCE MNM ALT IN FT	4000
--------------------------------	------

Changes: EYD32 added; AD Akmenė closed.

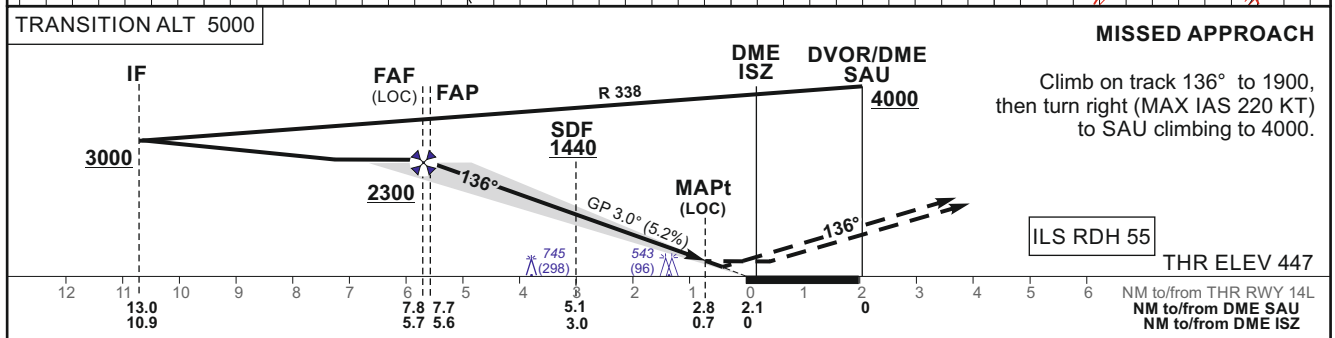
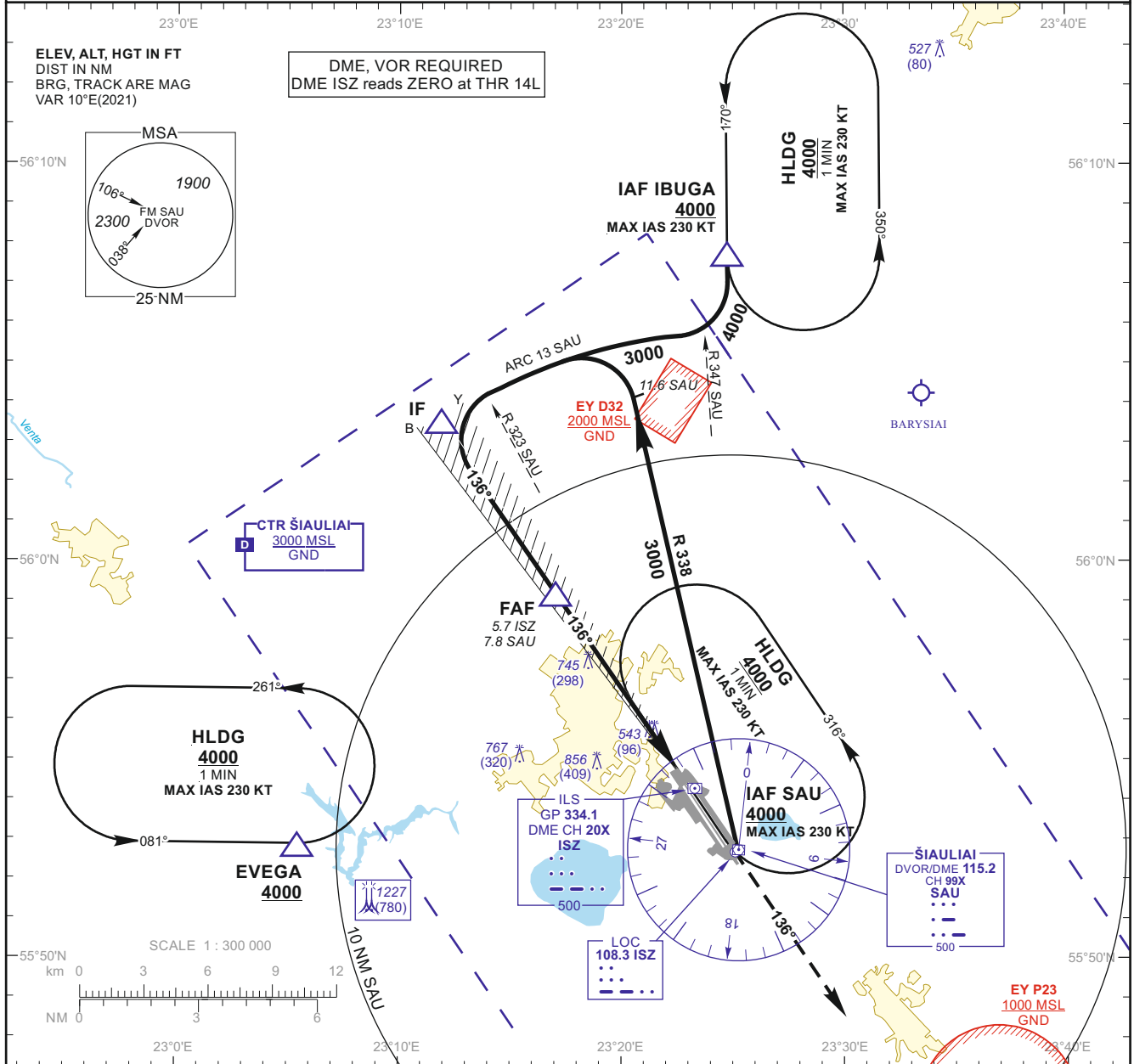
THIS PAGE INTENTIONALLY LEFT BLANK

INSTRUMENT APPROACH CHART - ICAO

AERODROME ELEV 447
 HEIGHTS RELATED TO THR RWY 14L - ELEV 447

TWR 120.405
 ATIS 120.755

ŠIAULIAI ILS or LOC RWY 14L (CAT A/B/C/D)



OCA(OCH)		A	B	C	D	DIST DME ISZ	5	4	3	2	1		
STRAIGHT-IN APPROACH	ILS CAT I	602 (155)	614 (167)	623 (176)	633 (186)	Altitude	2080	1760	1440	1130	820		
	LOC	830 (380)				Height	(1633)	(1313)	(993)	(683)	(373)		
	LOC (when SDF not received)	1000 (550)				LOC : timing not authorized for defining the MAPt							
CIRCLING		880 (440)	1160 (710)	1260 (810)		GS	Kts	80	100	120	140	160	180
						FAF - MAPt 5.0 NM	min:sec	3:45	3:00	2:30	2:09	1:53	1:40
						Rate of descent (5.2%)	ft/min	415	520	625	730	835	940

For data tabulation see verso

Changes: MSA; EYD32 added; minimum flight altitude; FAF, SDF and IAF SAU altitude.

INSTRUMENT
APPROACH
CHART - ICAO

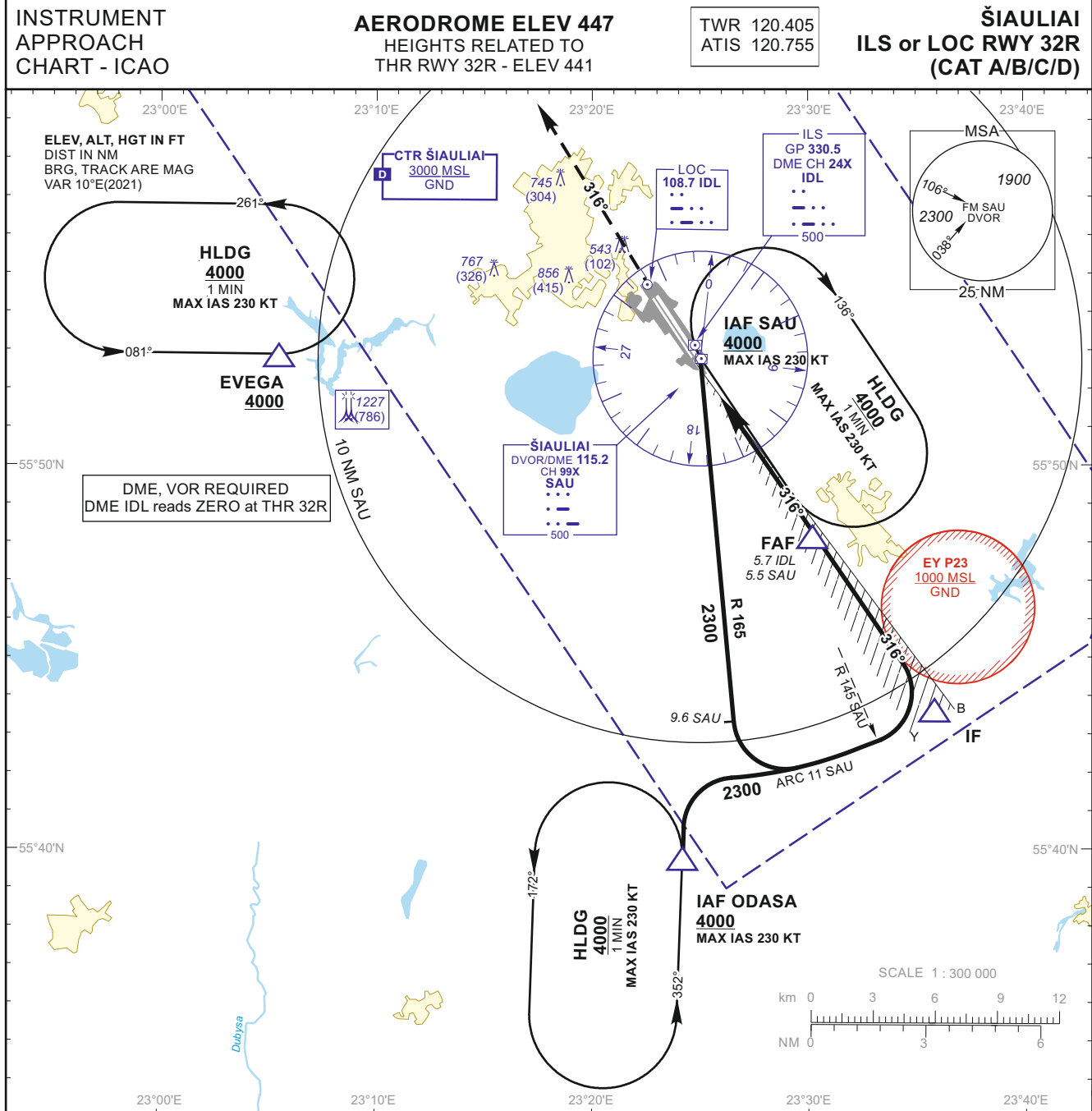
AERODROME ELEV 447
HEIGHTS RELATED TO
THR RWY 14L - ELEV 447

TWR 120.405
ATIS 120.755

ŠIAULIAI
ILS or LOC RWY 14L
(CAT A/B/C/D)

TABULAR DESCRIPTION

ILS or LOC INSTRUMENT APPROACH from IAFs (SAU, IBUGA)		
FIX/POINTS	COORDINATES	FIX FORMATION
EVEGA (HLDG)	55 52 52.4N 023 05 27.0E	BRG 081.02° / 11.00 NM SAU
IBUGA (IAF)	56 07 42.9N 023 24 45.4E	BRG 169.73° / 15.00 NM SAU
SAU (IAF)	55 52 44.6N 023 24 59.0E	
IF	56 03 27.1N 023 11 54.3E	BRG 136.35° / 10.92 NM ISZ ; 13.01 NM SAU
FAF	55 59 08.6N 023 17 05.6E	BRG 136.35° / 5.71 NM ISZ ; 7.80 NM SAU
FAP	55 59 01.3N 023 17 14.5E	BRG 136.35° / 5.56 NM ISZ ; 7.65 NM SAU
SDF	55 56 53.4N 023 19 48.0E	BRG 136.35° / 2.99 NM ISZ ; 5.08 NM SAU
MAPt	55 54 59.7N 023 22 04.2E	BRG 136.35° / 0.70 NM ISZ ; 2.79 NM SAU
THR RWY 14L	55 54 24.88N 023 22 45.78E	
DME ISZ	55 54 18.2N 023 23 02.4E	
LOC ISZ	55 52 40.71N 023 24 50.23E	
Final approach (LOC) descent angle: 3.00°		

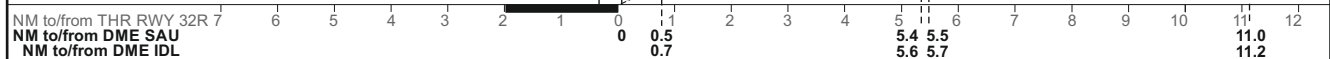


MISSED APPROACH

Climb on track 316° to 2300, then turn right (MAX IAS 220 KT) to SAU climbing to 4000. Climb with 3.5% or more until passing 2300 due to airspace restriction.

ILS RDH 51

THR ELEV 441



OCA(OCH)		A	B	C	D	DIST DME IDL	5	4	3	2	1
STRAIGHT-IN APPROACH	ILS CAT I	603 (162)	615 (174)	623 (182)	634 (193)	Altitude	2070	1750	1440	1120	810
	LOC	760 (320)				Height	(1629)	(1309)	(999)	(679)	(369)
CIRCLING		880 (440)	1160 (710)	1260 (810)		LOC : timing not authorized for defining the MAPt					
GS		Kts		80	100	120	140	160	180		
FAF - MAPt 5.0 NM		min:sec		3:45	3:00	2:30	2:09	1:53	1:40		
Rate of descent (5.2%)		ft/min		415	520	625	730	835	940		

For data tabulation see verso

Changes: MSA; missed approach; FAF, IAF SAU altitude.

INSTRUMENT
APPROACH
CHART - ICAO

AERODROME ELEV 447
HEIGHTS RELATED TO
THR RWY 32R - ELEV 441

TWR 120.405
ATIS 120.755

ŠIAULIAI
ILS or LOC RWY 32R
(CAT A/B/C/D)

TABULAR DESCRIPTION

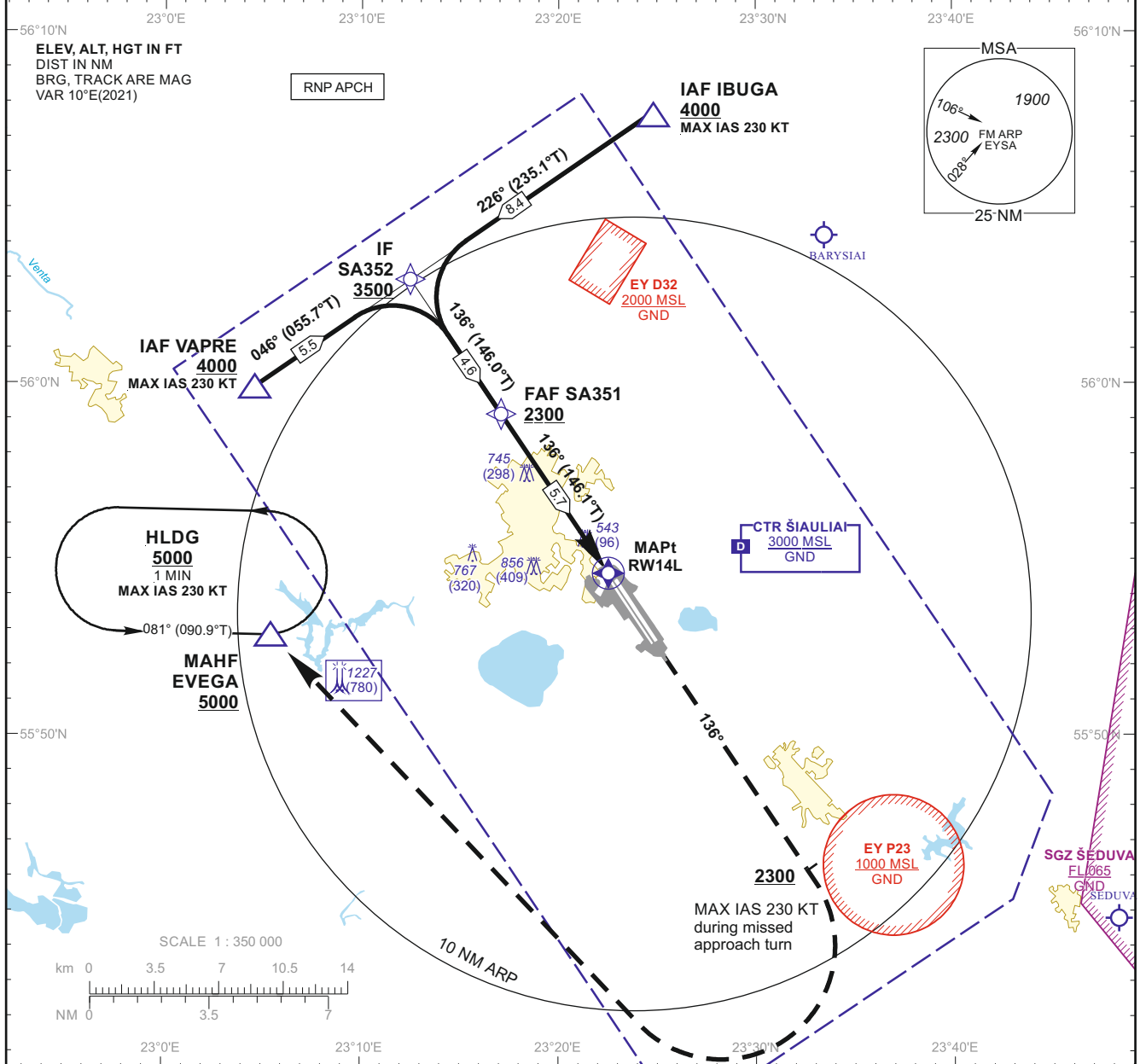
ILS or LOC INSTRUMENT APPROACH from IAFs (SAU, ODASA)		
FIX/POINTS	COORDINATES	FIX FORMATION
EVEGA (HLDG)	55 52 52.4N 023 05 27.0E	BRG 081.02° / 11.00 NM SAU
ODASA (IAF)	55 39 46.4N 023 24 09.9E	BRG 352.25° / 13.00 NM SAU
SAU (IAF)	55 52 44.6N 023 24 59.0E	
IF	55 43 33.7N 023 35 40.9E	BRG 316.29° / 11.20 NM IDL ; 11.00 NM SAU
FAF	55 48 06.0N 023 30 17.9E	BRG 316.29° / 5.73 NM IDL ; 5.53 NM SAU
FAP	55 48 12.8N 023 30 09.8E	BRG 316.29° / 5.59 NM IDL ; 5.40 NM SAU
MAPt	55 52 16.1N 023 25 19.7E	BRG 316.29° / 0.70 NM IDL ; 0.51 NM SAU
THR RWY 32R	55 52 50.94N 023 24 38.15E	
DME IDL	55 53 01.1N 023 24 34.7E	
LOC IDL	55 54 34.51N 023 22 34.26E	
Final approach (LOC) descent angle: 3.00°		

INSTRUMENT APPROACH CHART - ICAO

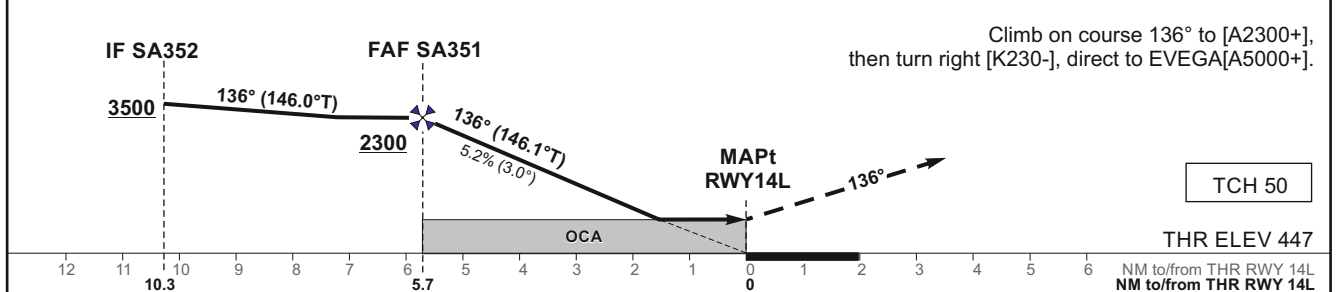
AERODROME ELEV 447
HEIGHTS RELATED TO THR RWY 14L - ELEV 447

TWR 120.405
ATIS 120.755

ŠIAULIAI RNP (LNAV only) RWY 14L (CAT A/B/C/D)



TRANSITION ALT 5000 MISSED APPROACH



OCA(OCH)	A	B	C	D	DIST THR RWY 14L	5	4	3	2
STRAIGHT-IN APPROACH	990 (540)				Altitude	2080	1760	1450	1130
CIRCLING	880 (440)	1160 (710)	1260 (810)		Timing not authorized for defining the MAPt				
	GS		Kts	80	100	120	140	160	180
	FAF - MAPt 5.7 NM		min:sec	4:16	3:25	2:51	2:26	2:08	1:54
	Rate of descent (5.2%)		ft/min	415	520	625	730	835	940
For data tabulation see verso									

Changes: MSA; EYD32 added; FAF altitude.

INSTRUMENT
APPROACH
CHART - ICAO

AERODROME ELEV 447
HEIGHTS RELATED TO
THR RWY 14L - ELEV 447

TWR 120.405
ATIS 120.755

ŠIAULIAI
RNP (LNAV only) RWY 14L
(CAT A/B/C/D)

TABULAR DESCRIPTION

IAF IBUGA

Serial Number	Path Descriptor	Waypoint Identifier	Fly-over	Course/Track °M(°T)	Magnetic Variation	Distance (NM)/ Time	Turn Direction	Altitude (FT)/ Flight level	Speed (KT)	VPA/TCH	Navigation Specification
001	IF	IBUGA	—	—	9.8	—	—	+4000	-230	—	RNP APCH
002	TF	SA352	—	226(235.1)	9.8	8.4	—	+3500	—	—	RNP APCH

IAF VAPRE

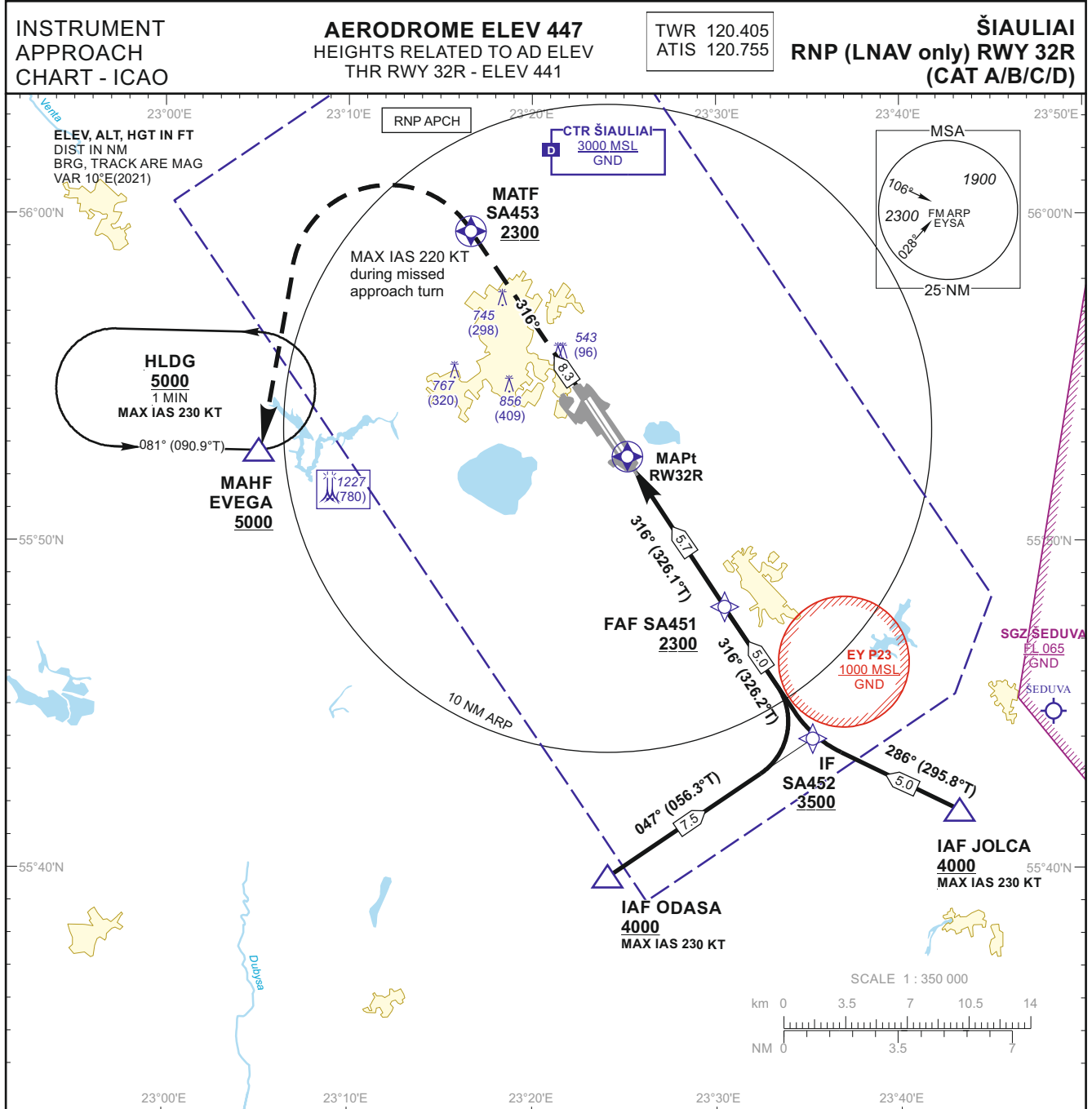
Serial Number	Path Descriptor	Waypoint Identifier	Fly-over	Course/Track °M(°T)	Magnetic Variation	Distance (NM)/ Time	Turn Direction	Altitude (FT)/ Flight level	Speed (KT)	VPA/TCH	Navigation Specification
001	IF	VAPRE	—	—	9.8	—	—	+4000	-230	—	RNP APCH
002	TF	SA352	—	046(055.7)	9.8	5.5	—	+3500	—	—	RNP APCH

001	IF	SA352	—	—	9.8	—	—	+3500	—	—	RNP APCH
002	TF	SA351	—	136(146.0)	9.8	4.6	—	+2300	—	—	RNP APCH
003	TF	RW14L	Y	136(146.1)	9.8	5.7	—	990	—	-3.00/50	RNP APCH
004	CA	—	—	136(146.2)	9.8	—	—	+2300	-230	—	RNP APCH
005	DF	EVEGA	—	—	9.8	—	R	+5000	—	—	RNP APCH
006	HM	EVEGA	—	081(090.9)	9.8	1 min	L	+5000	—	—	RNAV 1

WAYPOINT COORDINATES

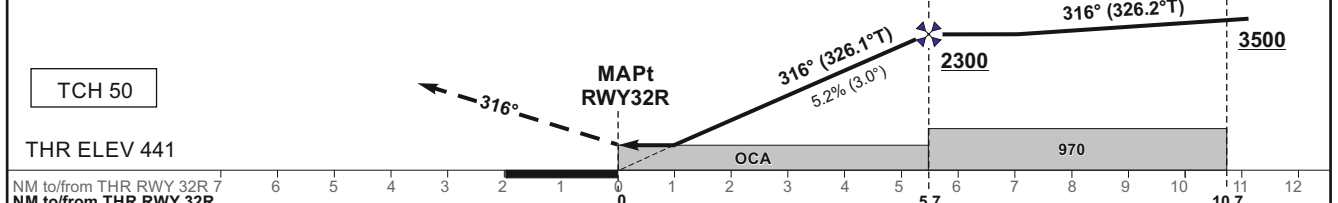
FIX/POINTS	COORDINATES
EVEGA (MAHF)	55 52 52.4N 023 05 27.0E
IBUGA (IAF)	56 07 42.9N 023 24 45.4E
VAPRE (IAF)	55 59 51.2N 023 04 24.3E
SA352 (IF)	56 02 56.9N 023 12 30.0E
SA351 (FAF)	55 59 08.5N 023 17 05.4E
RW14L (MAPt)	55 54 24.9N 023 22 45.8E

Changes: FAF altitude.



MISSED APPROACH TRANSITION ALT 5000

Climb on course 316° to SA453[A2300+], then turn left [K220-], direct to EVEGA[A5000+].



NM to/from THR RWY 32R 7		6	5	4	3	2	1											
NM to/from THR RWY 32R						0	1	2	3	4	5	6	7	8	9	10	11	12
OCA(OCH)		A	B	C	D	DIST THR RWY 32R	5	4	3	2	1							
STRAIGHT-IN APPROACH	LNAV	800 (350)				Altitude	2080	1760	1450	1130	820							
CIRCLING		880 (440)	1160 (710)	1260 (810)		Timing not authorized for defining the MAPt												
		GS		Kts		80	100	120	140	160	180							
		FAF - MAPt 5.7 NM		min:sec		4:16	3:25	2:51	2:26	2:08	1:54							
		Rate of descent (5.2%)		ft/min		415	520	625	730	835	940							
For data tabulation see verso																		

Changes: MSA; FAF altitude.

INSTRUMENT
APPROACH
CHART - ICAO

AERODROME ELEV 447
HEIGHTS RELATED TO AD ELEV
THR RWY 32R - ELEV 441

TWR 120.405
ATIS 120.755

ŠIAULIAI
RNP (LNAV only) RWY 32R
(CAT A/B/C/D)

TABULAR DESCRIPTION

IAF ODASA

Serial Number	Path Descriptor	Waypoint Identifier	Fly-over	Course/Track °M(°T)	Magnetic Variation	Distance (NM)/ Time	Turn Direction	Altitude (FT)/ Flight level	Speed (KT)	VPA/TCH	Navigation Specification
001	IF	ODASA	—	—	9.8	—	—	+4000	-230	—	RNP APCH
002	TF	SA452	—	047(056.3)	9.8	7.5	—	+3500	—	—	RNP APCH

IAF JOLCA

Serial Number	Path Descriptor	Waypoint Identifier	Fly-over	Course/Track °M(°T)	Magnetic Variation	Distance (NM)/ Time	Turn Direction	Altitude (FT)/ Flight level	Speed (KT)	VPA/TCH	Navigation Specification
001	IF	JOLCA	—	—	9.8	—	—	+4000	-230	—	RNP APCH
002	TF	SA452	—	286(295.8)	9.8	5.0	—	+3500	—	—	RNP APCH
001	IF	SA452	—	—	9.8	—	—	+3500	—	—	RNP APCH
002	TF	SA451	—	316(326.2)	9.8	5.0	—	+2300	—	—	RNP APCH
003	TF	RW32R	Y	316(326.1)	9.8	5.7	—	810	—	-3.00/50	RNP APCH
004	CF	SA453	Y	316(326.0)	9.8	8.3	—	+2300	-220	—	RNP APCH
005	DF	EVEGA	—	—	9.8	—	L	+5000	—	—	RNP APCH
006	HM	EVEGA	—	081(090.9)	9.8	1 min	L	+5000	—	—	RNAV 1

WAYPOINT COORDINATES

FIX/POINTS	COORDINATES
EVEGA (MAHF)	55 52 52.4N 023 05 27.0E
ODASA (IAF)	55 39 46.4N 023 24 09.9E
JOLCA (IAF)	55 41 46.8N 023 43 09.0E
SA452 (IF)	55 43 57.0N 023 35 13.3E
SA451 (FAF)	55 48 06.0N 023 30 17.9E
RW32R (MAPt)	55 52 50.9N 023 24 38.2E
SA453 (MATF)	55 59 44.3N 023 16 22.3E

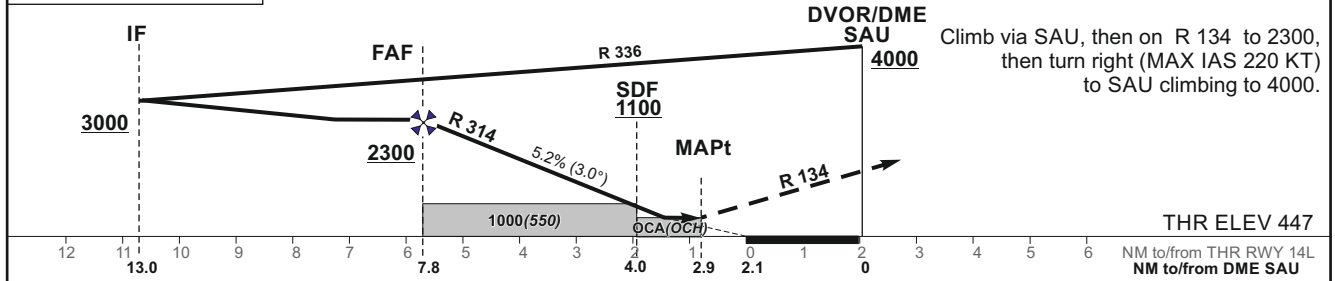
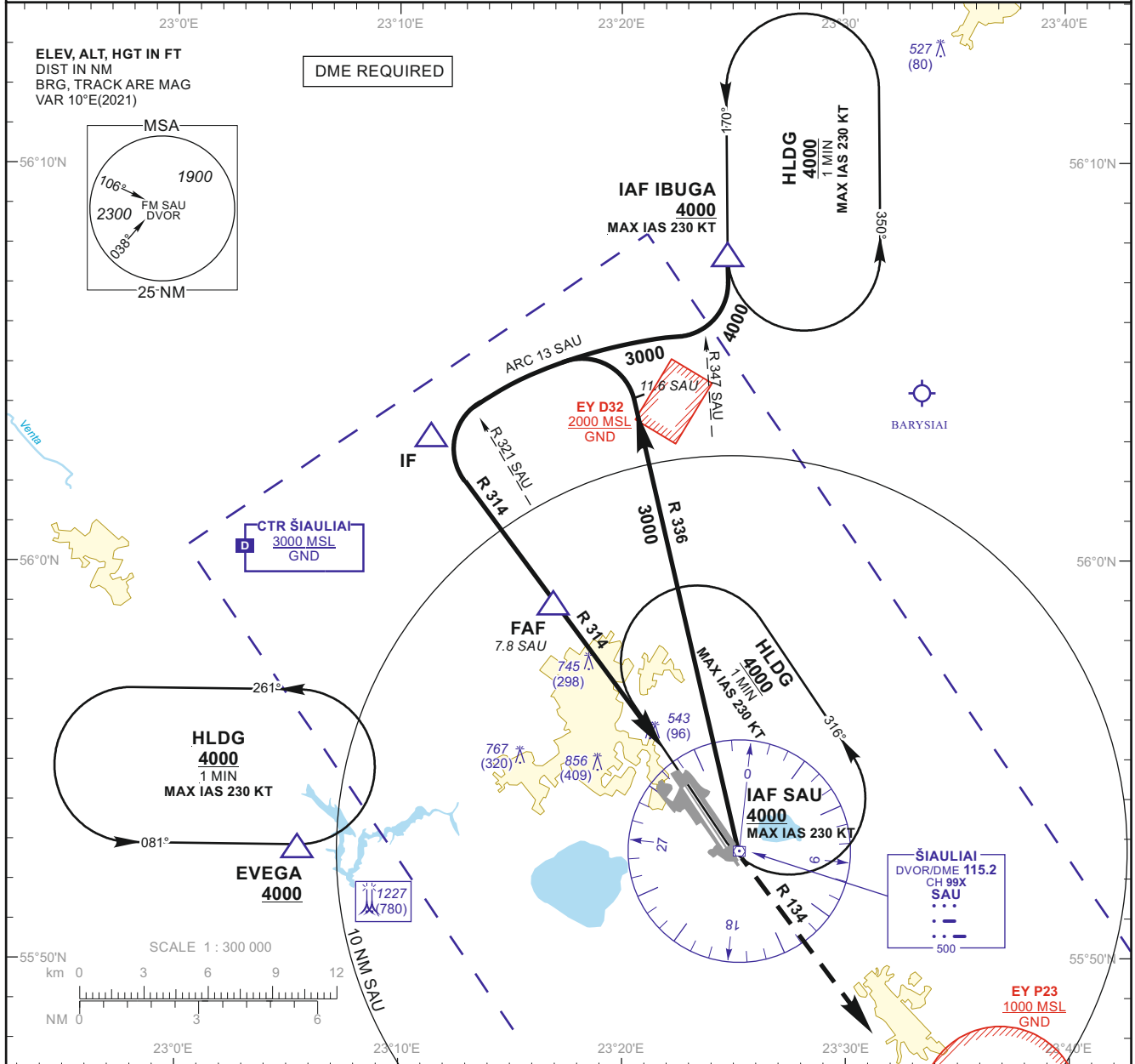
Changes: FAF altitude.

INSTRUMENT APPROACH CHART - ICAO

AERODROME ELEV 447
 HEIGHTS RELATED TO THR RWY 14L - ELEV 447

TWR 120.405
 ATIS 120.755

ŠIAULIAI VOR RWY 14L (CAT A/B/C/D)



Changes: MSA; EYD32 added; minimum flight altitude; FAF; SDF and IAF SAU altitude.

INSTRUMENT
APPROACH
CHART - ICAO

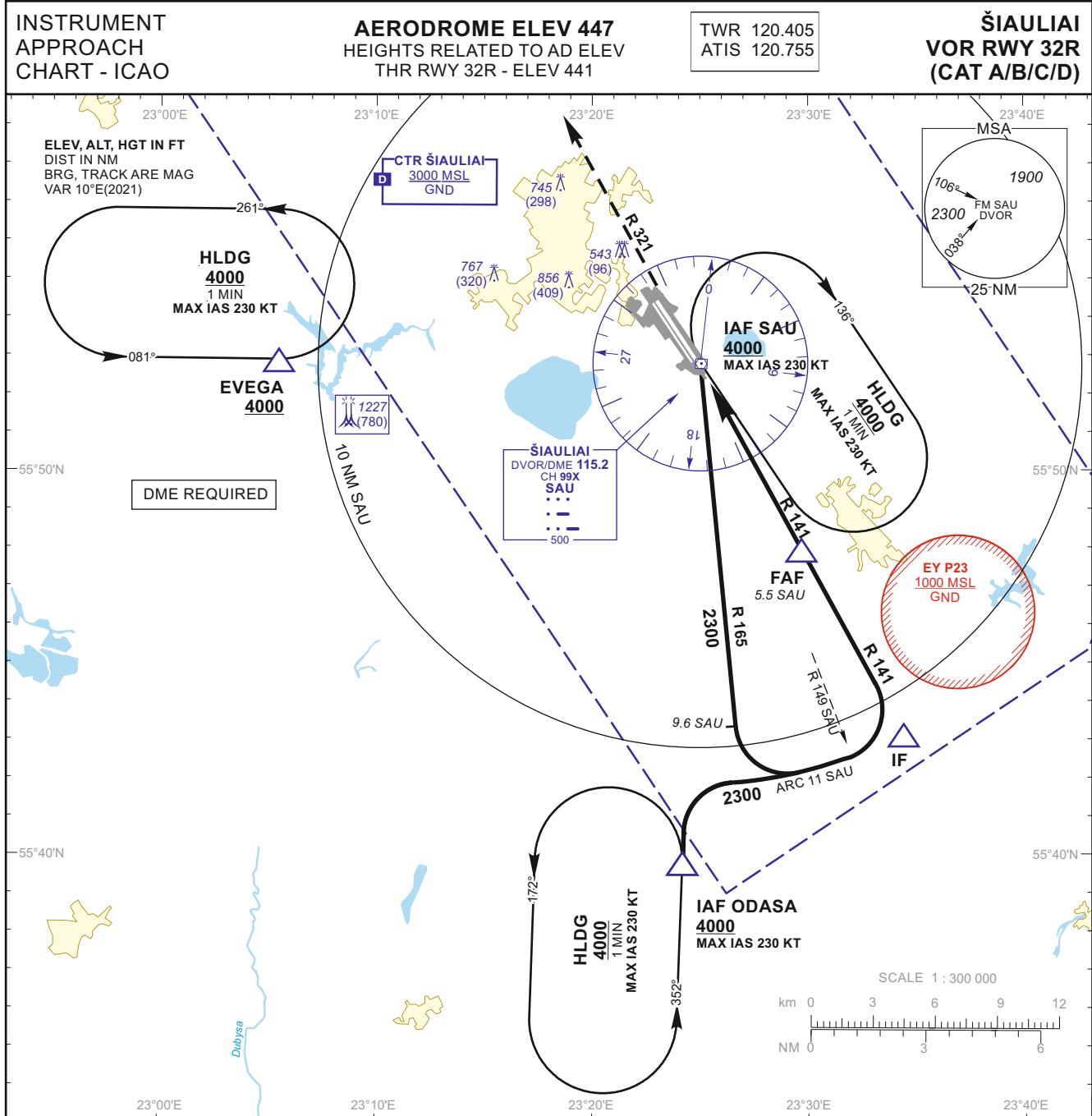
AERODROME ELEV 447
HEIGHTS RELATED TO
THR RWY 14L - ELEV 447

TWR 120.405
ATIS 120.755

ŠIAULIAI
VOR RWY 14L
(CAT A/B/C/D)

TABULAR DESCRIPTION

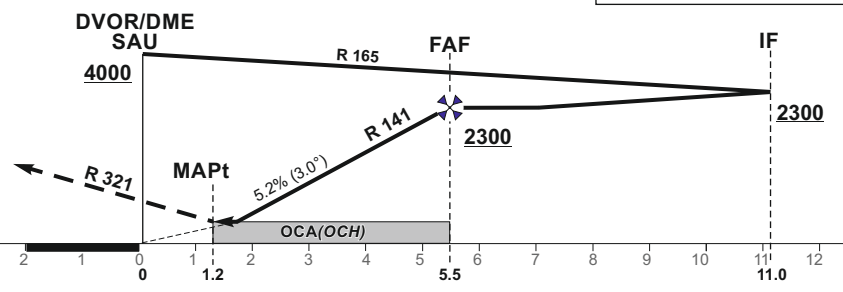
VOR INSTRUMENT APPROACH from IAFs (SAU, IBUGA)		
FIX/POINTS	COORDINATES	FIX FORMATION
EVEGA (HLDG)	55 52 52.4N 023 05 27.0E	BRG 081.02° / 11.00 NM SAU
IBUGA (IAF)	56 07 42.9N 023 24 45.4E	BRG 169.73° / 15.00 NM SAU
SAU (IAF)	55 52 44.6N 023 24 59.0E	
IF	56 03 14.3N 023 11 22.0E	BRG 134.26° / 13.01 NM SAU
FAF	55 59 02.5N 023 16 49.9E	BRG 134.26° / 7.80 NM SAU
SDF	55 55 58.5N 023 20 48.5E	BRG 134.26° / 4.00 NM SAU
MAPt	55 55 04.2N 023 21 58.8E	BRG 134.26° / 2.88 NM SAU
THR RWY 14L	55 54 24.88N 023 22 45.78E	
Final approach descent angle: 3.00°		



MISSED APPROACH

Climb via SAU, then on R 321 to 2300, then turn right (MAX IAS 210 KT) to SAU climbing to 4000. Climb with 3.5% or more until passing 2300 due to airspace restriction.

THR ELEV 441



OCA(OCH)	A	B	C	D	DIST DME SAU	5	4	3	2	
STRAIGHT-IN APPROACH	930 (480)				Altitude	2130	1820	1500	1190	
					Height	(1683)	(1373)	(1053)	(743)	
CIRCLING	880 (440)	1160 (710)	1260 (810)		Timing not authorized for defining the MAPt					
	GS		Kts		80	100	120	140	160	180
	FAF - MAPt 4.4 NM		min:sec		3:16	2:37	2:11	1:52	1:38	1:27
	Rate of descent (5.2%)		ft/min		415	520	625	730	835	940
For data tabulation see verso										

Changes: MSA; missed approach; FAF; IAF SAU altitude.

INSTRUMENT
APPROACH
CHART - ICAO

AERODROME ELEV 447
HEIGHTS RELATED TO AD ELEV
THR RWY 32R - ELEV 441

TWR 120.405
ATIS 120.755

ŠIAULIAI
VOR RWY 32R
(CAT A/B/C/D)

TABULAR DESCRIPTION

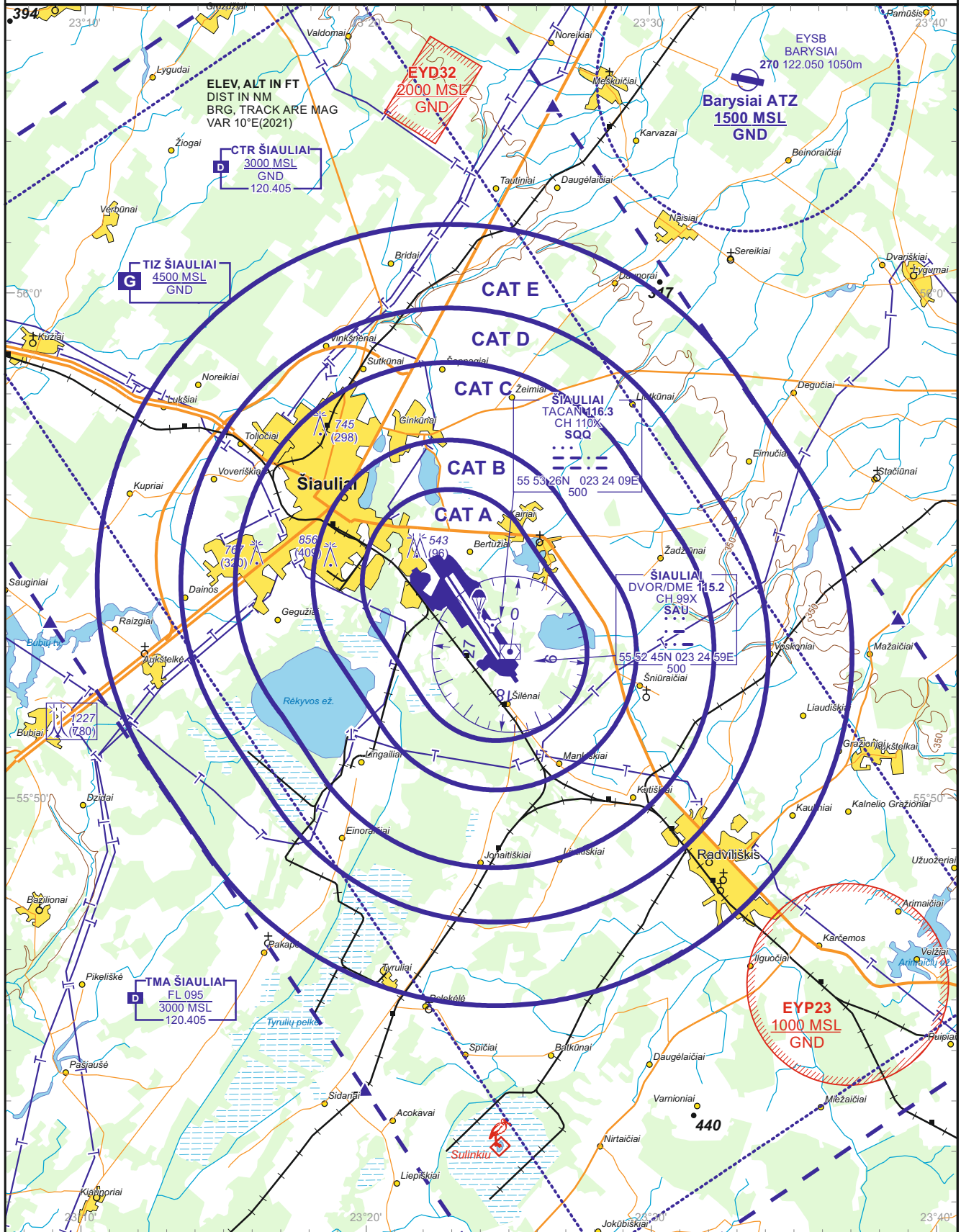
VOR INSTRUMENT APPROACH from IAFs (SAU, ODASA)		
FIX/POINTS	COORDINATES	FIX FORMATION
EVEGA (HLDG)	55 52 52.4N 023 05 27.0E	BRG 081.02° / 11.00 NM SAU
ODASA (IAF)	55 39 46.4N 023 24 09.9E	BRG 352.25° / 13.00 NM SAU
SAU (IAF)	55 52 44.6N 023 24 59.0E	
IF	55 43 07.3N 023 34 22.9E	BRG 321.33° / 11.00 NM SAU
FAF	55 47 54.2N 023 29 43.4E	BRG 321.33° / 5.54 NM SAU
MAPt	55 51 42.3N 023 26 00.1E	BRG 321.33° / 1.19 NM SAU
THR RWY 32R	55 52 50.94N 023 24 38.15E	
Final approach descent angle: 3.00°		

VISUAL CIRCLING
APPROACH CHART
TRANSITION ALT 5000

AERODROME ELEV 447
HEIGHTS RELATED TO AD ELEV

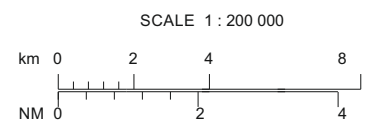
TWR 120.405
ATIS 120.755
INFO 124.455

ŠIAULIAI
RWY 14L/32R
RWY 14R/32L



CIRCLING	A	B	C	D	E
OCA(H)	880 (440)	1160 (710)	1260 (810)	1260 (810)	1350 (910)

Remarks: 1. OCA(H) values for E category ACFT circling applicable for military ACFT only
2. Class of airspace G when ATS does not operate
3. RWY 14R/32L is used for MIL ACFT only.



Changes: INFO FREQ: EYD32 added.

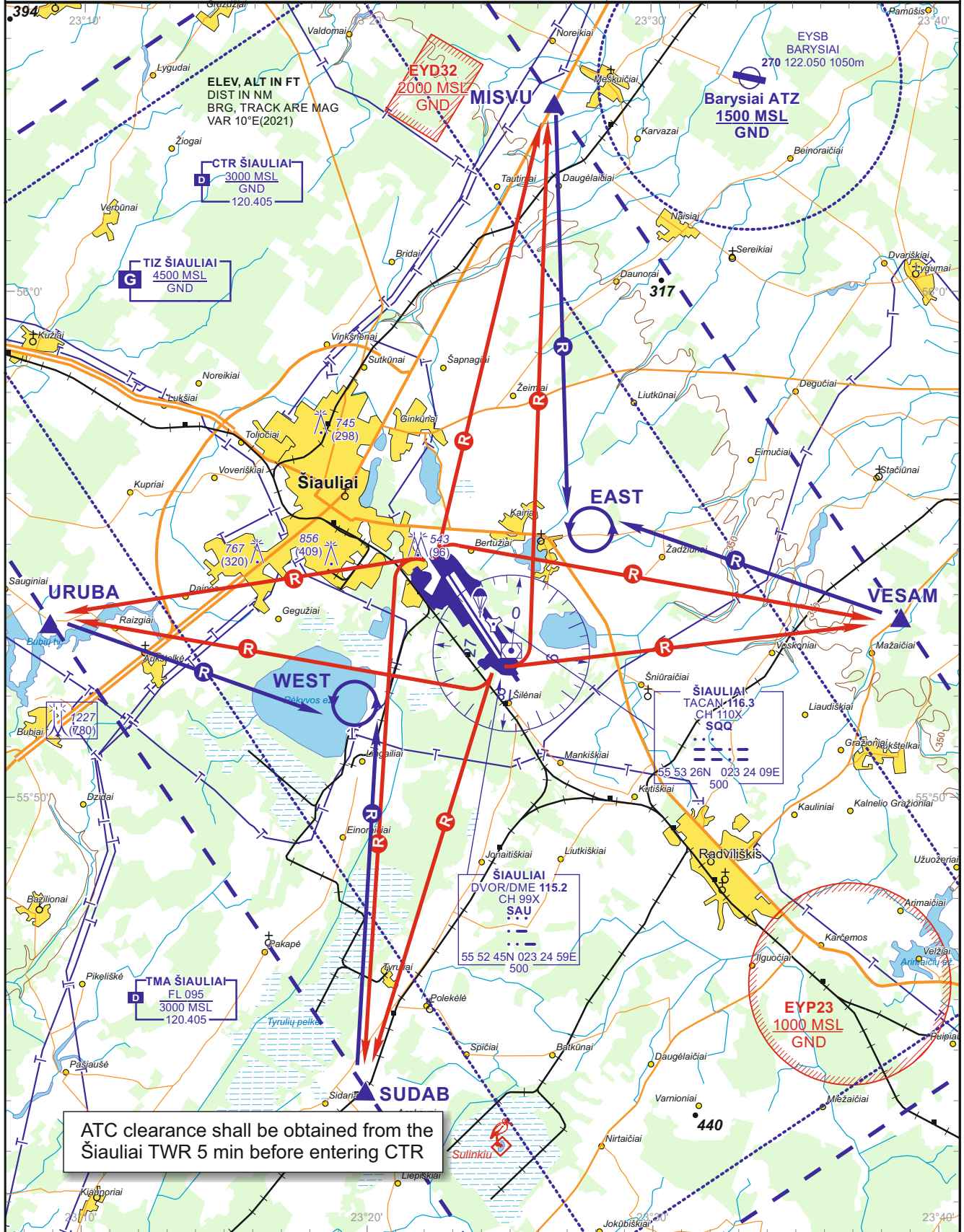
THIS PAGE INTENTIONALLY LEFT BLANK

VISUAL APPROACH
CHART - ICAO
TRANSITION LEVEL By ATC
TRANSITION ALT 5000

AERODROME ELEV 447
HEIGHTS RELATED TO AD ELEV

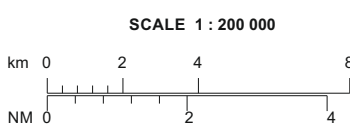
TWR 120.405
ATIS 120.755
INFO 124.455

ŠIAULIAI
RWY 14L/32R



ATC clearance shall be obtained from the Šiauliai TWR 5 min before entering CTR

CTR REP		
MISVU	R-355/D11.1 SAU	56 03 44N 023 26 34E
SUDAB	R-189/D9.0 SAU	55 44 15N 023 19 57E
URUBA	R-265/D9.1 SAU	55 53 30N 023 08 50E
VESAM	R-074/D7.8 SAU	55 53 34N 023 38 44E



PAPI(MEHT)	
RWY 14L:	Left 3.0° (70 FT)
RWY 32R:	Left 3.0° (65 FT)

Changes: INFO FREQ: EYD32 added.

THIS PAGE INTENTIONALLY LEFT BLANK

INSTRUMENT APPROACH CHART

AERODROME ELEV 447

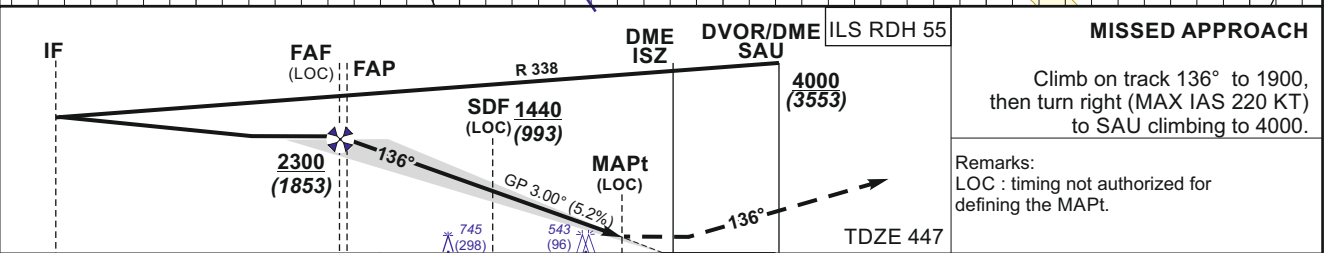
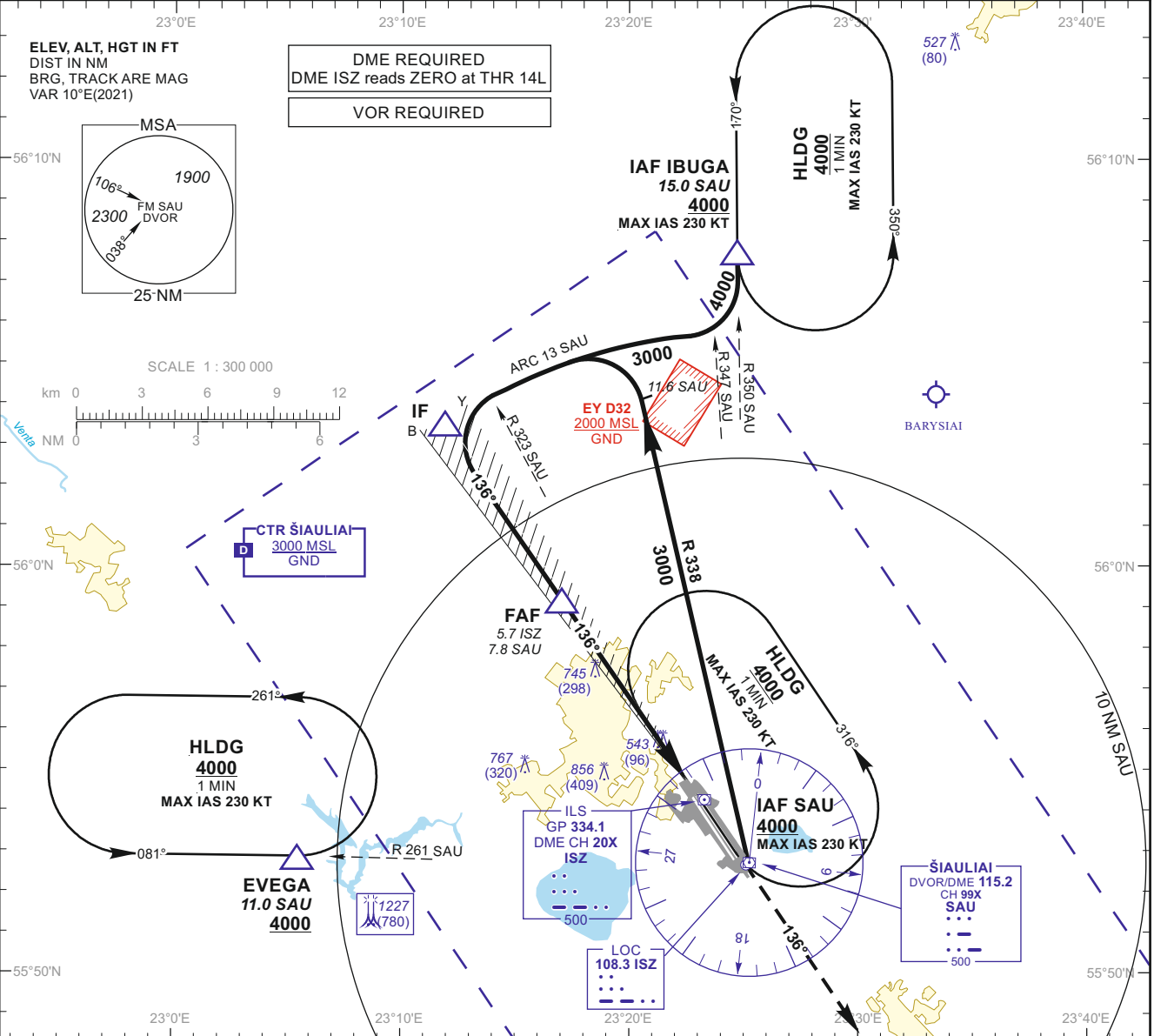
TWR 120.405
ATIS 120.755

ŠIAULIAI
ILS Z or LOC Z
RWY 14L (MIL)

for MILITARY ACFT
TRANSITION LEVEL By ATC
TRANSITION ALT **5000(4553)**

HEIGHTS RELATED TO
THR RWY 14L - ELEV 447

DVOR/DME SAU CH99X	APP COURSE 136°	FAF ALT 2300	Descent GP 3.00° (5.2%)	DA ref. to minimums MDA 830	TDZE 447	ALS (BP)	LDA 11483
-----------------------	--------------------	-----------------	----------------------------	---------------------------------------	--------------------	--------------------	---------------------



GS	Kts	80	100	120	140	160	180	DIST ISZ	5	4	3	2	1
FAF - MAPt 5.0 NM	min:sec	3:45	3:00	2:30	2:09	1:53	1:40	Altitude	2080	1760	1440	1130	820
Rate of descent (5.2%)	ft/min	415	520	625	730	835	940	Height	(1633)	(1313)	(993)	(683)	(373)

	STRAIGHT-IN APPROACH									CIRCLING APPROACH			
	ILS CAT I			LOC			LOC (When SDF not received)			MDA(H)	Visibility		
	DA(H)	Full	ALS out	MDA(H)	Full	ALS out	MDA(H)	Full	ALS out				
A											880 (440)	1500m	A
B	647 (200)	RVR 550m	RVR 1200m	830 (380)	RVR 1000m		1000 (550)				1160 (710)	2400m	B
C													C
D											1260 (810)	3600m	D
E	651 (204)										1350 (910)	4300m	E

Changes: MSA; EYD32 added; minimum flight altitude; FAF, SDF and IAF SAU altitude.

INSTRUMENT APPROACH CHART
for MILITARY ACFT
TRANSITION LEVEL By ATC
TRANSITION ALT **5000(4553)**

AERODROME ELEV 447
HEIGHTS RELATED TO
THR RWY 14L - ELEV 447

TWR 120.405
ATIS 120.755

ŠIAULIAI
ILS Z or LOC Z
RWY 14L (MIL)

TABULAR DESCRIPTION

ILS or LOC INSTRUMENT APPROACH for MILITARY ACFT from IAFs (SAU, IBUGA)		
FIX/POINTS	COORDINATES	FIX FORMATION
EVEGA (HLDG)	55 52.87N 023 05.45E	BRG 081.02° / 11.00 NM SAU
IBUGA (IAF)	56 07.72N 023 24.76E	BRG 169.73° / 15.00 NM SAU
SAU (IAF)	55 52.74N 023 24.98E	
IF	56 03.45N 023 11.91E	BRG 136.35° / 10.92 NM ISZ ; 13.01 NM SAU
FAF	55 59.14N 023 17.09E	BRG 136.35° / 5.71 NM ISZ ; 7.80 NM SAU
FAP	55 59.02N 023 17.24E	BRG 136.35° / 5.56 NM ISZ ; 7.65 NM SAU
SDF	55 56.89N 023 19.80E	BRG 136.35° / 2.99 NM ISZ ; 5.08 NM SAU
MAPt	55 55.00N 023 22.07E	BRG 136.35° / 0.70 NM ISZ ; 2.79 NM SAU
THR RWY 14L	55 54.41N 023 22.76E	
DME ISZ	55 54.30N 023 23.04E	
LOC ISZ	55 52.68N 023 24.84E	
Final approach (LOC) descent angle: 3.00°		

Changes:

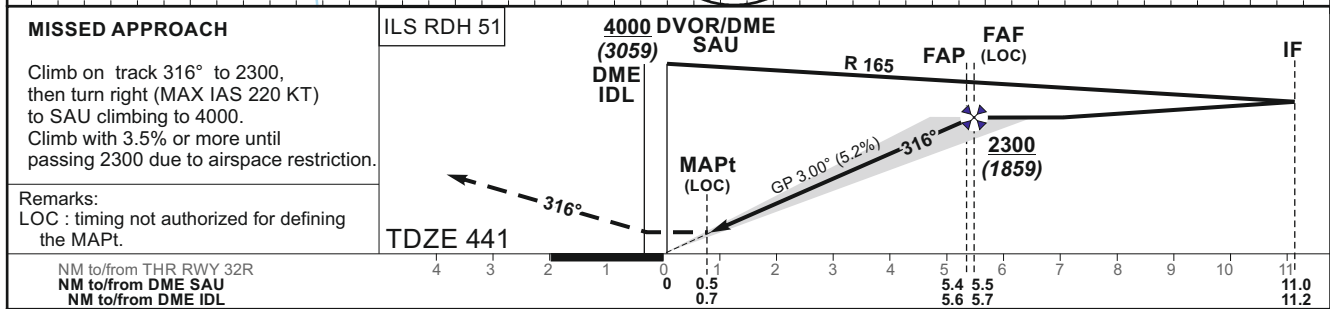
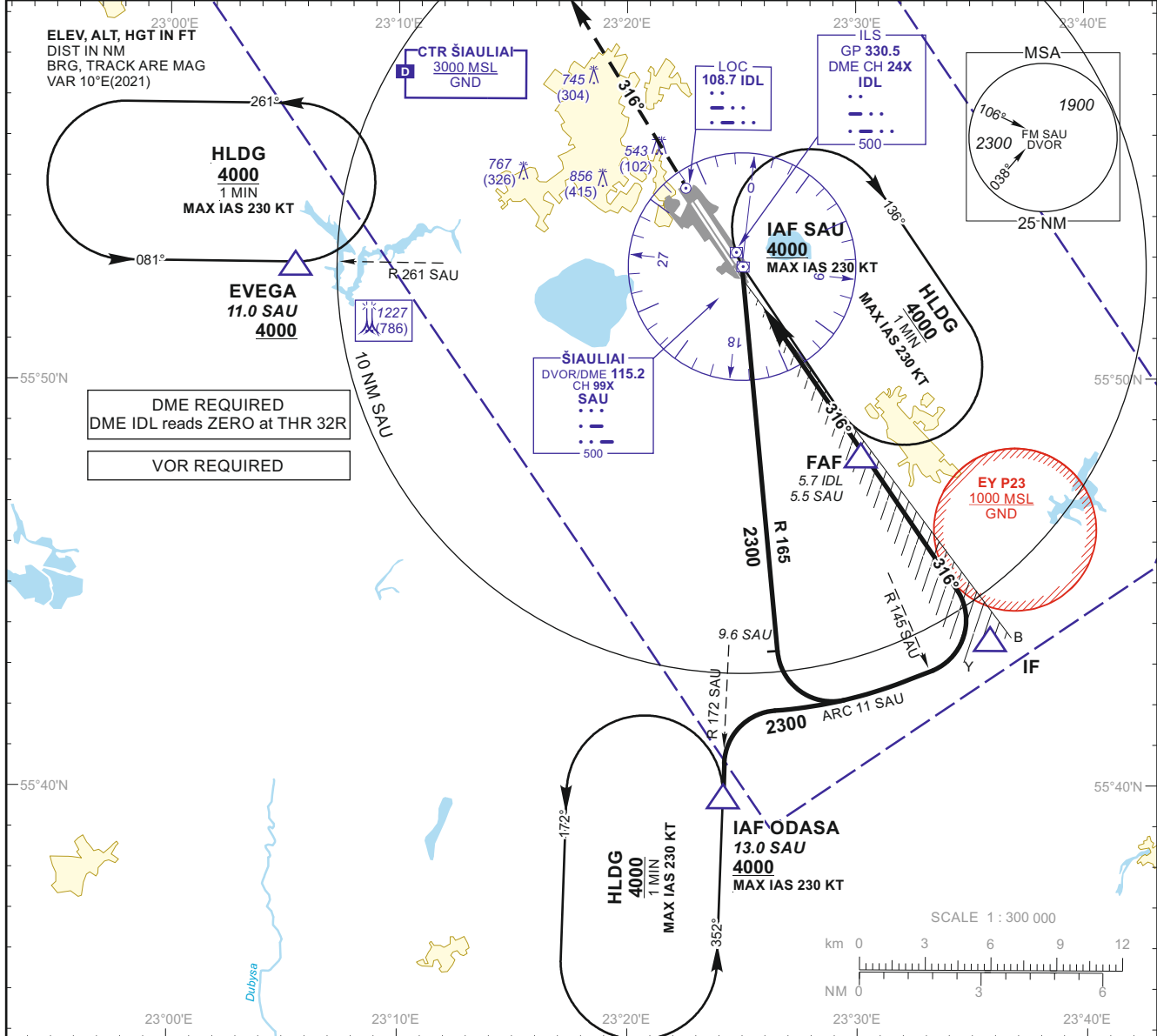
INSTRUMENT APPROACH CHART
 for MILITARY ACFT
 TRANSITION LEVEL By ATC
 TRANSITION ALT **5000(4559)**

AERODROME ELEV 447
 HEIGHTS RELATED TO
 THR RWY 32R - ELEV 441

TWR 120.405
 ATIS 120.755

ŠIAULIAI
ILS Z or LOC Z
RWY 32R (MIL)

DVOR/DME SAU CH99X	APP COURSE 316°	FAF ALT 2300	Descent GP 3.00° (5.2%)	DA ref. to minimums MDA 760	TDZE 441	ALS (BP)	LDA 11483
-----------------------	--------------------	-----------------	----------------------------	---------------------------------------	-------------	-------------	--------------



GS	Kts	80	100	120	140	160	180	DIST IDL	5	4	3	2	1
FAF - MAPt 5.0 NM	min:sec	3:45	3:00	2:30	2:09	1:53	1:40	Altitude	2070	1750	1440	1120	810
Rate of descent (5.2%)	ft/min	415	520	625	730	835	940	Height	(1629)	(1309)	(999)	(679)	(369)

	STRAIGHT-IN APPROACH						CIRCLING APPROACH		A
	ILS CAT I			LOC			MDA(H)	Visibility	
	DA(H)	Full	ALS out	MDA(H)	Full	ALS out			
A							880 (440)	1500m	A
B	641 (200)	RVR 550m	RVR 1200m	760 (320)	RVR 750m	RVR 1400m	1160 (710)	2400m	B
C							1260 (810)	3600m	C
D							1350 (910)	4300m	D
E	652 (211)								E

Changes: MSA; missed approach; FAF; IAF SAU altitude.

INSTRUMENT APPROACH CHART
for MILITARY ACFT
TRANSITION LEVEL By ATC
TRANSITION ALT **5000(4559)**

AERODROME ELEV 447
HEIGHTS RELATED TO
THR RWY 32R - ELEV 441

TWR 120.405
ATIS 120.755

ŠIAULIAI
ILS Z or LOC Z
RWY 32R (MIL)

TABULAR DESCRIPTION

ILS or LOC INSTRUMENT APPROACH for MILITARY ACFT from IAFs (SAU, ODASA)		
FIX/POINTS	COORDINATES	FIX FORMATION
EVEGA (HLDG)	55 52.87N 023 05.45E	BRG 081.02° / 11.00 NM SAU
ODASA (IAF)	56 07.72N 023 24.76E	BRG 352.25° / 13.00 NM SAU
SAU (IAF)	55 52.74N 023 24.98E	
IF	55 43.56N 023 35.68E	BRG 316.29° / 11.20 NM IDL ; 11.00 NM SAU
FAF	55 48.10N 023 30.30E	BRG 316.29° / 5.73 NM IDL ; 5.53 NM SAU
FAP	55 48.21N 023 30.16E	BRG 316.29° / 5.59 NM IDL ; 5.40 NM SAU
MAPt	55 52.27N 023 25.33E	BRG 316.29° / 0.70 NM IDL ; 0.51 NM SAU
THR RWY 32R	55 52.85N 023 24.64E	
DME IDL	55 53.02N 023 24.58E	
LOC IDL	55 54.58N 023 22.57E	
Final approach (LOC) descent angle: 3.00°		

Changes:

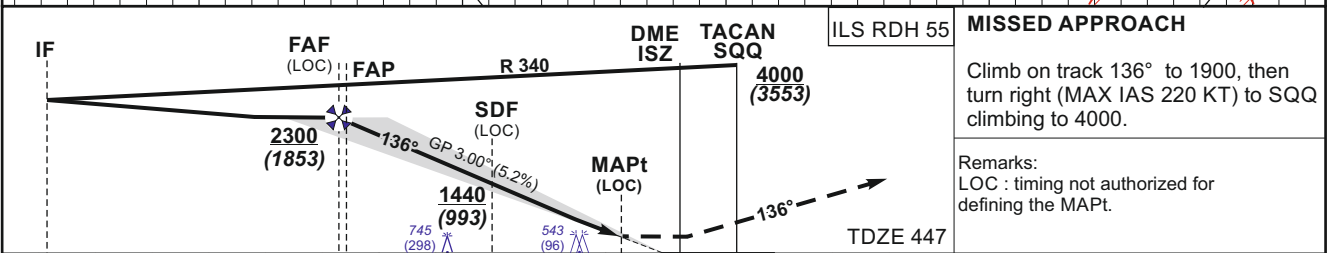
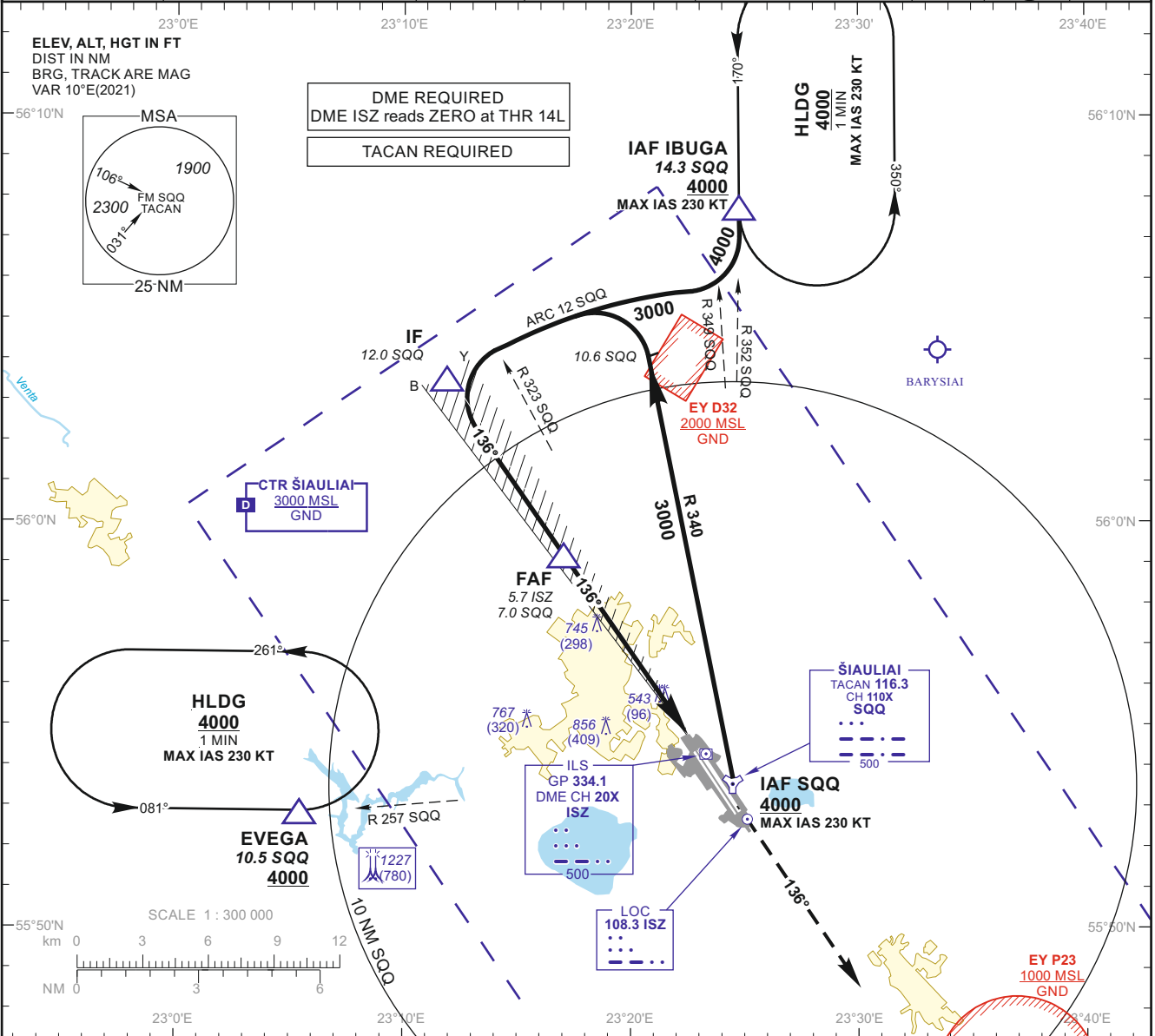
INSTRUMENT APPROACH CHART
for MILITARY ACFT
TRANSITION LEVEL By ATC
TRANSITION ALT **5000(4553)**

AERODROME ELEV 447
HEIGHTS RELATED TO
THR RWY 14L - ELEV 447

TWR 120.405
ATIS 120.755

ŠIAULIAI
ILS Y or LOC Y
RWY 14L (MIL)

TACAN SQQ CH110X	APP COURSE 136°	FAF ALT 2300	Descent GP 3.00° (5.2%)	DA ref. to minimums MDA 830	TDZE 447	ALS (BP)	LDA 11483
---------------------	--------------------	-----------------	----------------------------	---------------------------------------	--------------------	--------------------	---------------------



GS	Kts	80	100	120	140	160	180	DIST ISZ	5	4	3	2	1
FAF - MAPt 5.0 NM	min:sec	3:45	3:00	2:30	2:09	1:53	1:40	Altitude	2080	1760	1440	1130	820
Rate of descent (5.2%)	ft/min	415	520	625	730	835	940	Height	(1633)	(1313)	(993)	(683)	(373)

	STRAIGHT-IN APPROACH									CIRCLING APPROACH	
	ILS CAT I			LOC			LOC (When SDF not received)			MDA(H)	Visibility
	DA(H)	Full	ALS out	MDA(H)	Full	ALS out	MDA(H)	Full	ALS out		
A	647 (200)	RVR 550m	RVR 1200m	830 (380)	RVR 1000m	RVR 1500m	1000 (550)	RVR 2000m	RVR 2700m	880 (440)	A
B											B
C											C
D											D
E	651 (204)									1260 (810)	E
										1350 (910)	

Changes: MSA; EYD32 added; minimum flight altitude; FAF, SDF and IAF SQQ altitude.

INSTRUMENT APPROACH CHART
for MILITARY ACFT
TRANSITION LEVEL By ATC
TRANSITION ALT **5000(4553)**

AERODROME ELEV 447
HEIGHTS RELATED TO
THR RWY 14L - ELEV 447

TWR 120.405
ATIS 120.755

ŠIAULIAI
ILS Y or LOC Y
RWY 14L (MIL)

TABULAR DESCRIPTION

ILS or LOC INSTRUMENT APPROACH for MILITARY ACFT from IAFs (SQQ, IBUGA)		
FIX/POINTS	COORDINATES	FIX FORMATION
EVEGA (HLDG)	55 52.87N 023 05.45E	BRG 077.32° / 10.54 NM SQQ
IBUGA (IAF)	56 07.72N 023 24.76E	BRG 171.58° / 14.32 NM SQQ
SQQ TACAN (IAF)	55 53.43N 023 24.14E	
IF	56 03.31N 023 12.07E	BRG 136.35° / 10.75 NM ISZ ; 12.00 NM SQQ
FAF	55 59.14N 023 17.09E	BRG 136.35° / 5.71 NM ISZ ; 6.97 NM SQQ
FAP	55 59.02N 023 17.24E	BRG 136.35° / 5.56 NM ISZ ; 6.82 NM SQQ
SDF	55 56.89N 023 19.80E	BRG 136.35° / 2.99 NM ISZ ; 4.24 NM SQQ
MAPt	55 55.00N 023 22.07E	BRG 136.35° / 0.70 NM ISZ ; 1.96 NM SQQ
THR RWY 14L	55 54.41N 023 22.76E	
DME ISZ	55 54.30N 023 23.04E	
LOC ISZ	55 52.68N 023 24.84E	
Final approach (LOC) descent angle: 3.00°		

Changes:

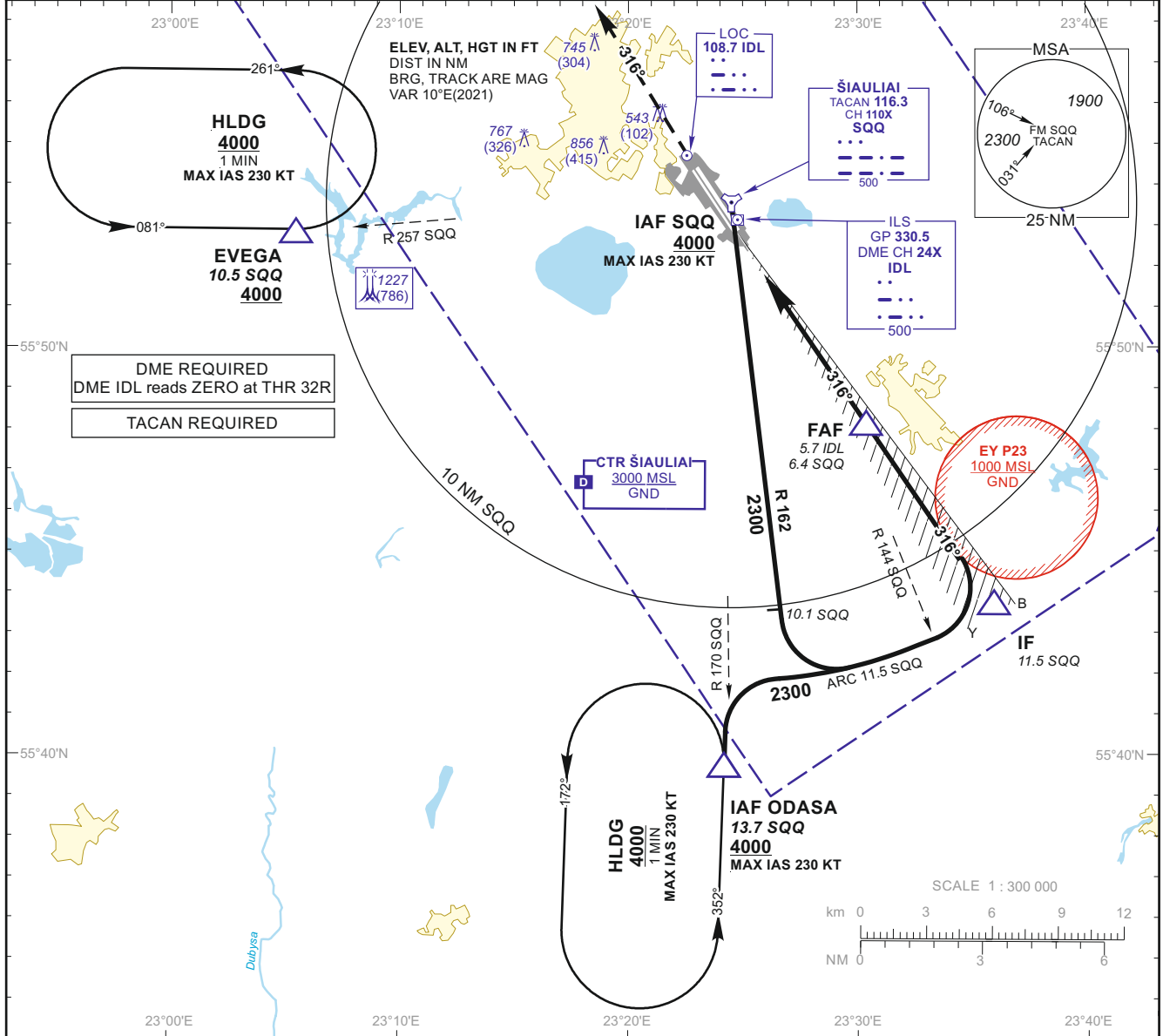
INSTRUMENT APPROACH CHART
for MILITARY ACFT
TRANSITION LEVEL BY ATC
TRANSITION ALT **5000(4559)**

AERODROME ELEV 447
HEIGHTS RELATED TO
THR RWY 32R - ELEV 441

TWR 120.405
ATIS 120.755

ŠIAULIAI
ILS Y or LOC Y
RWY 32R (MIL)

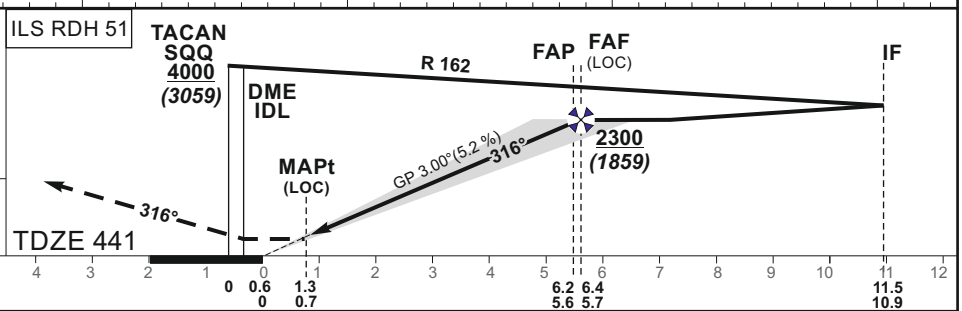
TACAN SQQ CH110X	APP COURSE 316°	FAF ALT 2300	Descent GP 3.00° (5.2%)	DA ref. to minimums MDA 760	TDZE 441	ALS (BP)	LDA 11483
---------------------	--------------------	-----------------	----------------------------	---------------------------------------	--------------------	-------------	---------------------



MISSED APPROACH
Climb on track 316° to 2300, then turn right (MAX IAS 220 KT) to SQQ climbing to 4000.
Climb with 3.5% or more until passing 2300 due to airspace restriction.

Remarks:
LOC : timing not authorized for defining the MAPt.

NM to/from THR RWY 32R
NM to/from TACAN SQQ
NM to/from DME IDL



GS	Kts	80	100	120	140	160	180	DIST IDL	5	4	3	2	1
FAF - MAPt 5.0 NM	min:sec	3:45	3:00	2:30	2:09	1:53	1:40	Altitude	2070	1750	1440	1120	810
Rate of descent (5.2%)	ft/min	415	520	625	730	835	940	Height	(1629)	(1309)	(999)	(679)	(369)

	STRAIGHT-IN APPROACH						CIRCLING APPROACH		A
	ILS CAT I			LOC			MDA(H)	Visibility	
	DA(H)	Full	ALS out	MDA(H)	Full	ALS out			
A							880 (440)	1500m	A
B	641 (200)	RVR 550m	RVR 1200m	760 (320)	RVR 750m	RVR 1400m	1160 (710)	2400m	B
C							1260 (810)	3600m	C
D							1350 (910)	4300m	D
E	652 (211)								E

Changes: MSA; missed approach; FAF; IAF; SQQ altitude.

INSTRUMENT APPROACH CHART
for MILITARY ACFT
TRANSITION LEVEL By ATC
TRANSITION ALT **5000(4559)**

AERODROME ELEV 447
HEIGHTS RELATED TO
THR RWY 32R - ELEV 441

TWR 120.405
ATIS 120.755

ŠIAULIAI
ILS Y or LOC Y
RWY 32R (MIL)

TABULAR DESCRIPTION

ILS or LOC INSTRUMENT APPROACH for MILITARY ACFT from IAFs (SQQ, ODASA)		
FIX/POINTS	COORDINATES	FIX FORMATION
EVEGA (HLDG)	55 52.87N 023 05.45E	BRG 077.32° / 10.54 NM SQQ
ODASA (IAF)	56 07.72N 023 24.76E	BRG 350.16° / 13.68 NM SQQ
SQQ TACAN (IAF)	55 53.43N 023 24.14E	
IF	55 43.84N 023 35.35E	BRG 316.29° / 10.87 NM IDL ; 11.50 NM SQQ
FAF	55 48.10N 023 30.30E	BRG 316.29° / 5.73 NM IDL ; 6.37 NM SQQ
FAP	55 48.21N 023 30.16E	BRG 316.29° / 5.59 NM IDL ; 6.23 NM SQQ
MAPt	55 52.27N 023 25.33E	BRG 316.29° / 0.70 NM IDL ; 1.34 NM SQQ
THR RWY 32R	55 52.85N 023 24.64E	
DME IDL	55 53.02N 023 24.58E	
LOC IDL	55 54.58N 023 22.57E	
Final approach (LOC) descent angle: 3.00°		

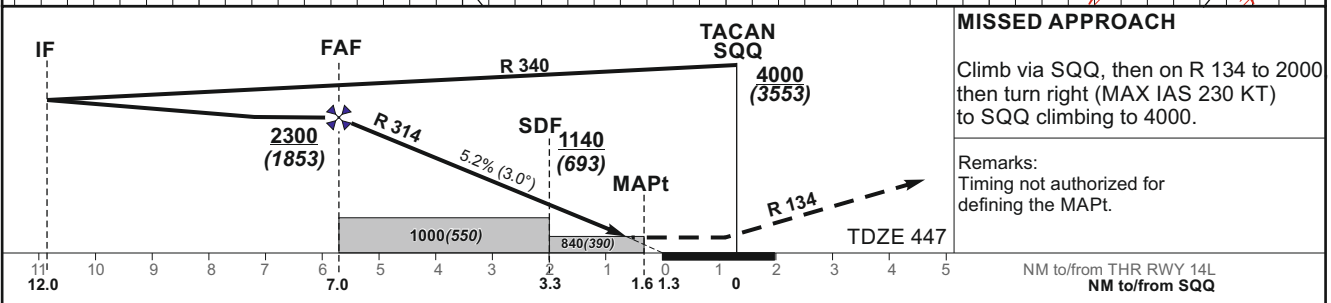
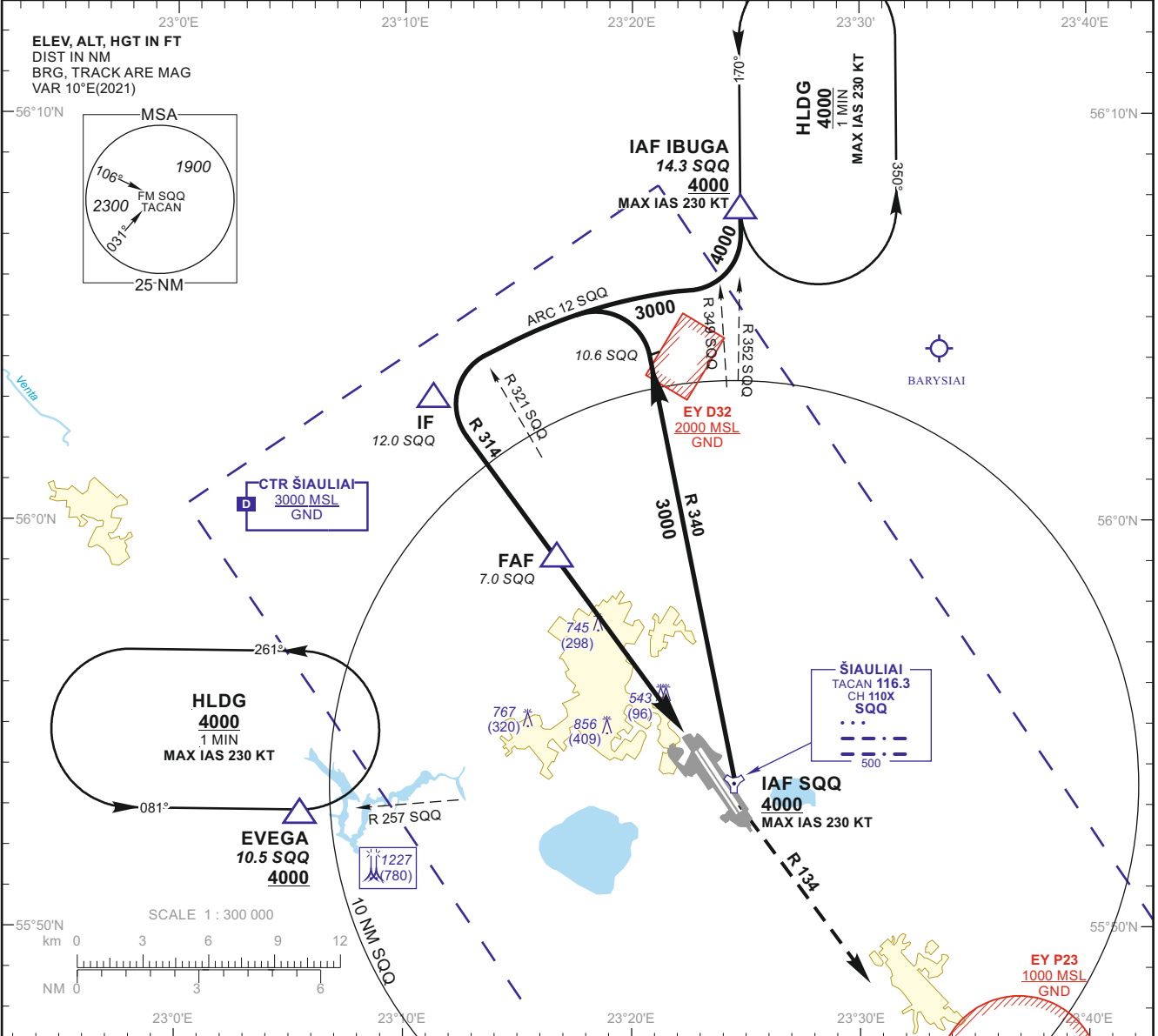
INSTRUMENT APPROACH CHART
for MILITARY ACFT
TRANSITION LEVEL By ATC
TRANSITION ALT **5000(4553)**

AERODROME ELEV 447
HEIGHTS RELATED TO AD ELEV
THR RWY 14L - ELEV 447

TWR 120.405
ATIS 120.755

ŠIAULIAI TACAN RWY 14L (MIL)

TACAN SQQ CH110X	APP COURSE 134°	FAF ALT 2300	Descent GP 5.2% (3.00°)	MDA 840	TDZE 447	ALS (BP)	LDA 11483
---------------------	--------------------	-----------------	----------------------------	---------	-------------	-------------	--------------



MISSED APPROACH
Climb via SQQ, then on R 134 to 2000 then turn right (MAX IAS 230 KT) to SQQ climbing to 4000.

Remarks:
Timing not authorized for defining the MAPt.

GS	Kts	80	100	120	140	160	180	DIST SQQ	6	5	4	3
FAF - MAPt 5.3 NM	min:sec	3:59	3:11	2:39	2:16	1:59	1:46	Altitude	2000	1680	1370	1050
Rate of descent (5.2%)	ft/min	415	520	625	730	835	940	Height	(1553)	(1233)	(923)	(603)

	STRAIGHT-IN APPROACH						CIRCLING APPROACH		A	
	TACAN			TACAN (When SDF not received)			MDA(H)	Visibility		
	MDA(H)	Full	ALS out	MDA(H)	Full	ALS out				
A	840 (390)	RVR 1100m	RVR 1800m	1000 (550)	RVR 1500m	RVR 2000m	RVR 2700m	880 (440)	1500m	A
B					RVR 2200m	RVR 2900m	1160 (710)	2400m	B	
C					RVR 2200m	RVR 2900m	1260 (810)	3600m	C	
D					RVR 2200m	RVR 2900m	1350 (910)	4300m	D	
E					RVR 2200m	RVR 2900m	1350 (910)	4300m	E	

Changes: MSA; EYD32 added; minimum flight altitude; FAF, SDF and IAF SQQ altitude.

INSTRUMENT APPROACH CHART
for MILITARY ACFT
TRANSITION LEVEL By ATC
TRANSITION ALT **5000(4553)**

AERODROME ELEV 447
HEIGHTS RELATED TO AD ELEV
THR RWY 14L - ELEV 447

TWR 120.405
ATIS 120.755

ŠIAULIAI
TACAN
RWY 14L (MIL)

TABULAR DESCRIPTION

TACAN INSTRUMENT APPROACH for MILITARY ACFT from IAFs (SQQ, IBUGA)		
FIX/POINTS	COORDINATES	FIX FORMATION
EVEGA (HLDG)	55 52.87N 023 05.45E	BRG 077.32° / 10.54 NM SQQ
IBUGA (IAF)	56 07.72N 023 24.76E	BRG 171.58° / 14.32 NM SQQ
SQQ TACAN (IAF)	55 53.43N 023 24.14E	
IF	56 03.05N 023 11.41E	BRG 133.70° / 12.01 NM SQQ
FAF	55 59.01N 023 16.76E	BRG 133.70° / 6.97 NM SQQ
SDF	55 56.07N 023 20.66E	BRG 133.70° / 3.3 NM SQQ
MAPt	55 54.74N 023 22.42E	BRG 133.70° / 1.63 NM SQQ
THR RWY 14L	55 54.41N 023 22.76E	
Final approach descent angle: 3.00°		

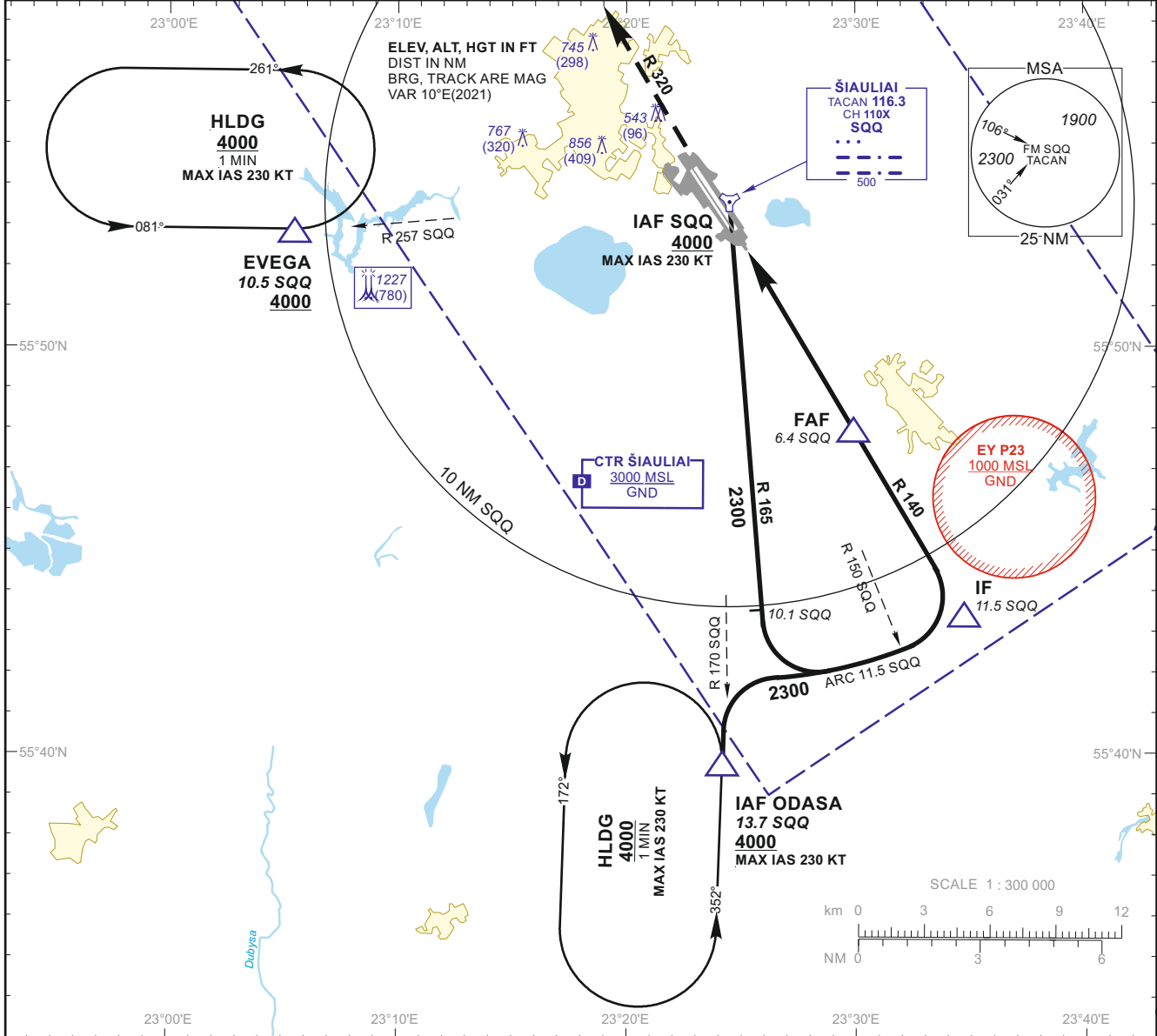
INSTRUMENT APPROACH CHART
 for MILITARY ACFT
 TRANSITION LEVEL By ATC
 TRANSITION ALT **5000(4553)**

AERODROME ELEV 447
 HEIGHTS RELATED TO AD ELEV
 THR RWY 32R - ELEV 441

TWR 120.405
 ATIS 120.755

ŠIAULIAI TACAN RWY 32R (MIL)

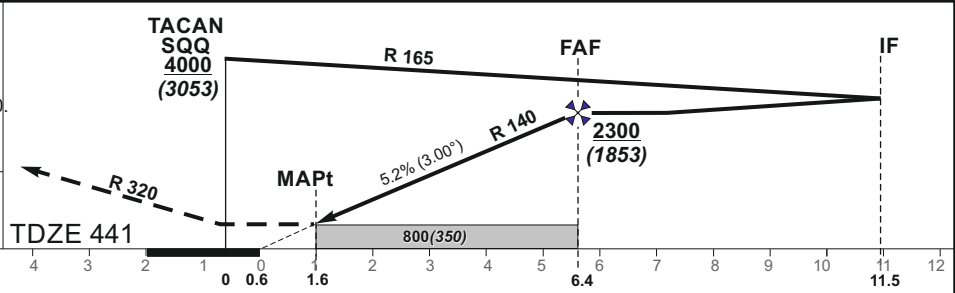
TACAN SQQ CH110X	APP COURSE 320°	FAF ALT 2300	Descent GP 5.2% (3.00°)	MDA 800	TDZE 441	ALS (BP)	LDA 11483
---------------------	--------------------	-----------------	----------------------------	---------	-------------	-------------	--------------



MISSED APPROACH
 Climb via SQQ, then on R 320 to 2300, then turn right with MIN bank angle 25° (MAX IAS 230 KT) to SQQ climbing to 4000. Climb with 3.5% or more until passing 2300 due to airspace restriction.

Remarks:
 Timing not authorized for defining the MAPt.

NM to/from THR RWY 32R
 NM to/from TACAN SQQ



GS	Kts	80	100	120	140	160	180	DIST SQQ	6	5	4	3	2
FAF - MAPt 4.8 NM	min:sec	3:36	2:53	2:24	2:03	1:48	1:36	Altitude	2190	1870	1560	1240	920
Rate of descent (5.2%)	ft/min	415	520	625	730	835	940	Height	(1743)	(1423)	(1113)	(793)	(473)

	STRAIGHT-IN APPROACH			CIRCLING APPROACH		
	TACAN			TACAN		
	MDA(H)	Full	ALS out	MDA(H)	Visibility	
A	800 (350)	RVR 900m	RVR 1500m	880 (440)	1500m	A
B				1160 (710)	2400m	B
C				1260 (810)	3600m	C
D				1350 (910)	4300m	D
E						

Changes: MSA; missed approach; FAF; IAF; SQQ altitude.

INSTRUMENT APPROACH CHART
for MILITARY ACFT
TRANSITION LEVEL By ATC
TRANSITION ALT **5000(4553)**

AERODROME ELEV 447
HEIGHTS RELATED TO AD ELEV
THR RWY 32R - ELEV 441

TWR 120.405
ATIS 120.755

ŠIAULIAI
TACAN
RWY 32R (MIL)

TABULAR DESCRIPTION

TACAN INSTRUMENT APPROACH for MILITARY ACFT from IAFs (SQQ, ODASA)		
FIX/POINTS	COORDINATES	FIX FORMATION
EVEGA (HLDG)	55 52.87N 023 05.45E	BRG 077.32° / 10.54 NM SQQ
ODASA (IAF)	56 07.72N 023 24.76E	BRG 350.16° / 13.68 NM SQQ
SQQ TACAN (IAF)	55 53.43N 023 24.14E	
IF	55 43.49N 023 34.36E	BRG 320.05° / 11.50 NM SQQ
FAF	55 47.93N 023 29.81E	BRG 320.05° / 6.37 NM SQQ
MAPt	55 52.04N 023 25.58E	BRG 320.05° / 1.61 NM SQQ
THR RWY 32R	55 52.85N 023 24.64E	
Final approach descent angle: 3.00°		

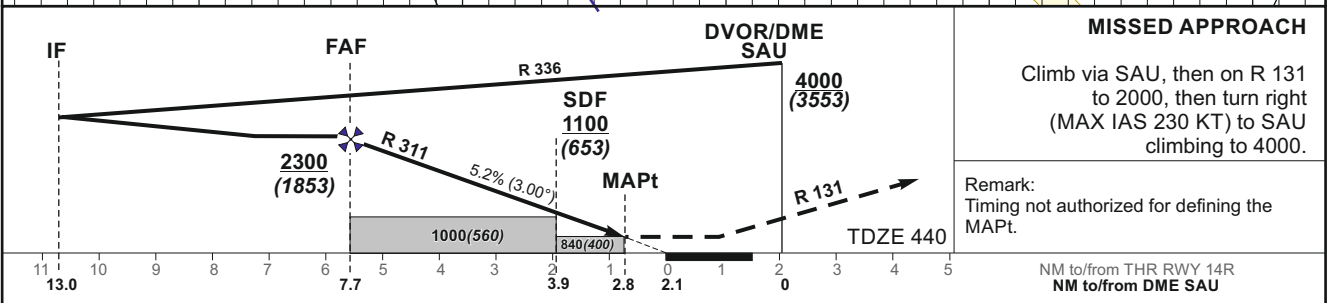
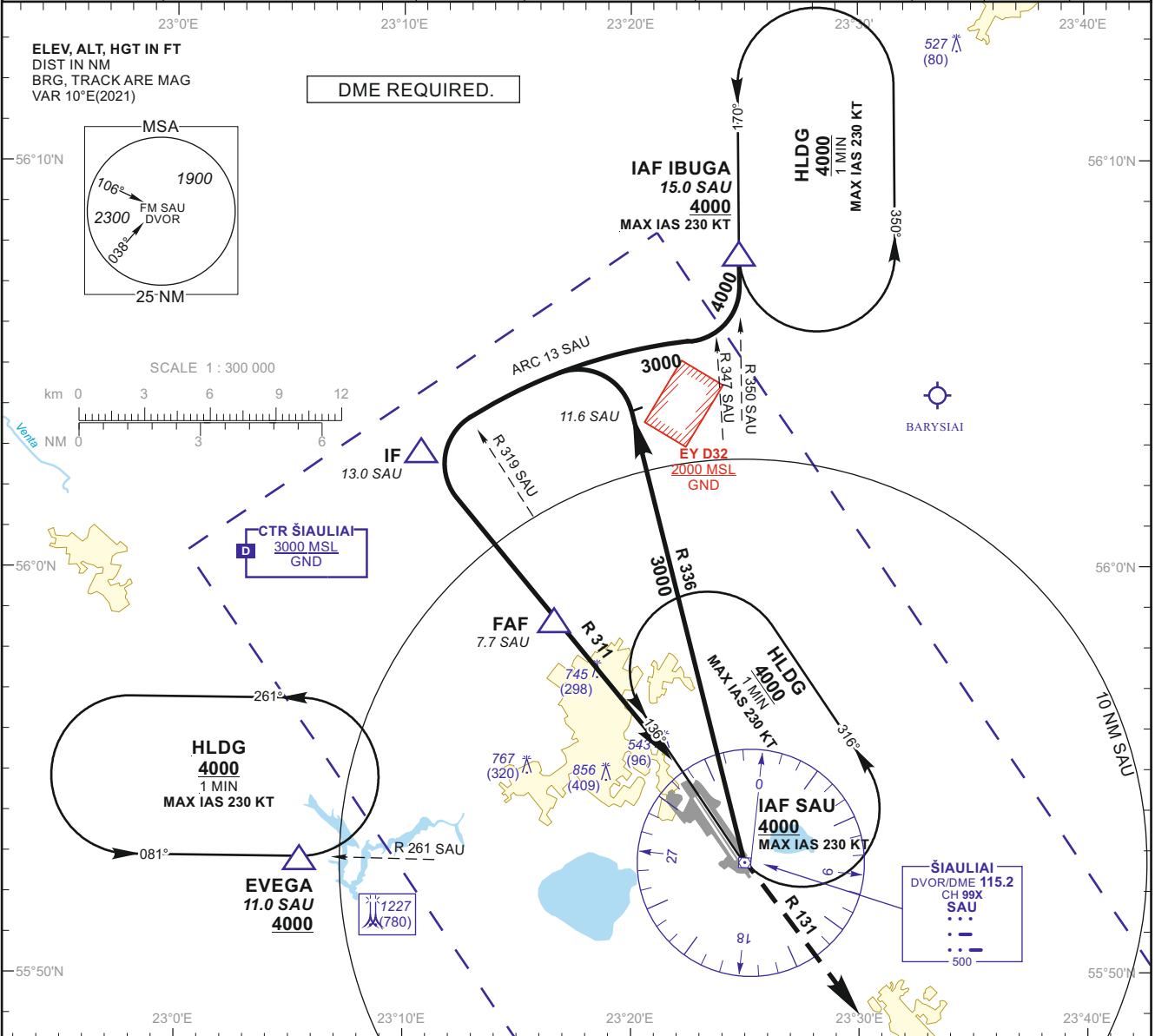
INSTRUMENT APPROACH CHART
for MILITARY ACFT
TRANSITION LEVEL By ATC
TRANSITION ALT **5000(4553)**

AERODROME ELEV 447
HEIGHTS RELATED TO AD ELEV
THR RWY 14R ELEV 440

TWR 120.405
ATIS 120.755

**ŠIAULIAI
VOR
RWY 14R (MIL)**

DVOR/DME SAU CH99X	APP COURSE 131°	FAF ALT 2300	Descent GP 5.2% (3.00°)	MDA 840	TDZE 440	ALS OUT	LDA 10643
-----------------------	--------------------	-----------------	----------------------------	---------	-------------	------------	--------------



GS	Kts	80	100	120	140	160	180	DIST SAU	7	6	5	4
FAF - MAPt 4.9 NM	min:sec	3:40	2:56	2:27	2:06	1:50	1:38	Altitude	2080	1770	1450	1140
Rate of descent (5.2%)	ft/min	415	520	625	730	835	940	Height	(1633)	(1323)	(1003)	(693)

	STRAIGHT-IN APPROACH						CIRCLING APPROACH		A
	VOR			VOR (When SDF not received)			MDA(H)	Visibility	
	MDA(H)	Full	ALS out	MDA(H)	Full	ALS out			
A	840 (400)	RVR 1100m	RVR 1500m	1000 (560)	RVR 2000m	RVR 2700m	880 (440)	1500m	A
B							1160 (710)	2400m	B
C							1260 (810)	3600m	C
D							1350 (910)	4300m	E
E									

Changes: MSA; EYD32 added; minimum flight altitude; FAF, SDF and IAF SAU altitude.

INSTRUMENT APPROACH CHART
for MILITARY ACFT
TRANSITION LEVEL By ATC
TRANSITION ALT **5000(4553)**

AERODROME ELEV 447
HEIGHTS RELATED TO AD ELEV
THR RWY 14R ELEV 440

TWR 120.405
ATIS 120.755

**ŠIAULIAI
VOR
RWY 14R (MIL)**

TABULAR DESCRIPTION

VOR INSTRUMENT APPROACH for MILITARY ACFT from IAFs (SAU, IBUGA)		
FIX/POINTS	COORDINATES	FIX FORMATION
EVEGA (HLDG)	55 52.87N 023 05.45E	BRG 081.02° / 11.00 NM SAU
IBUGA (IAF)	56 07.72N 023 24.76E	BRG 169.73° / 15.00 NM SAU
SAU (IAF)	55 52.74N 023 24.98E	
IF	56 02.85N 023 10.47E	BRG 131.46° / 13.01 NM SAU
FAF	55 58.75N 023 16.38E	BRG 131.46° / 7.72 NM SAU
SDF	55 55.79N 023 20.62E	BRG 131.46° / 3.92 NM SAU
MAPt	55 54.90N 023 21.90E	BRG 131.46° / 2.77 NM SAU
THR RWY 14R	55 54.25N 023 22.68E	
Final approach descent angle: 3.00°		

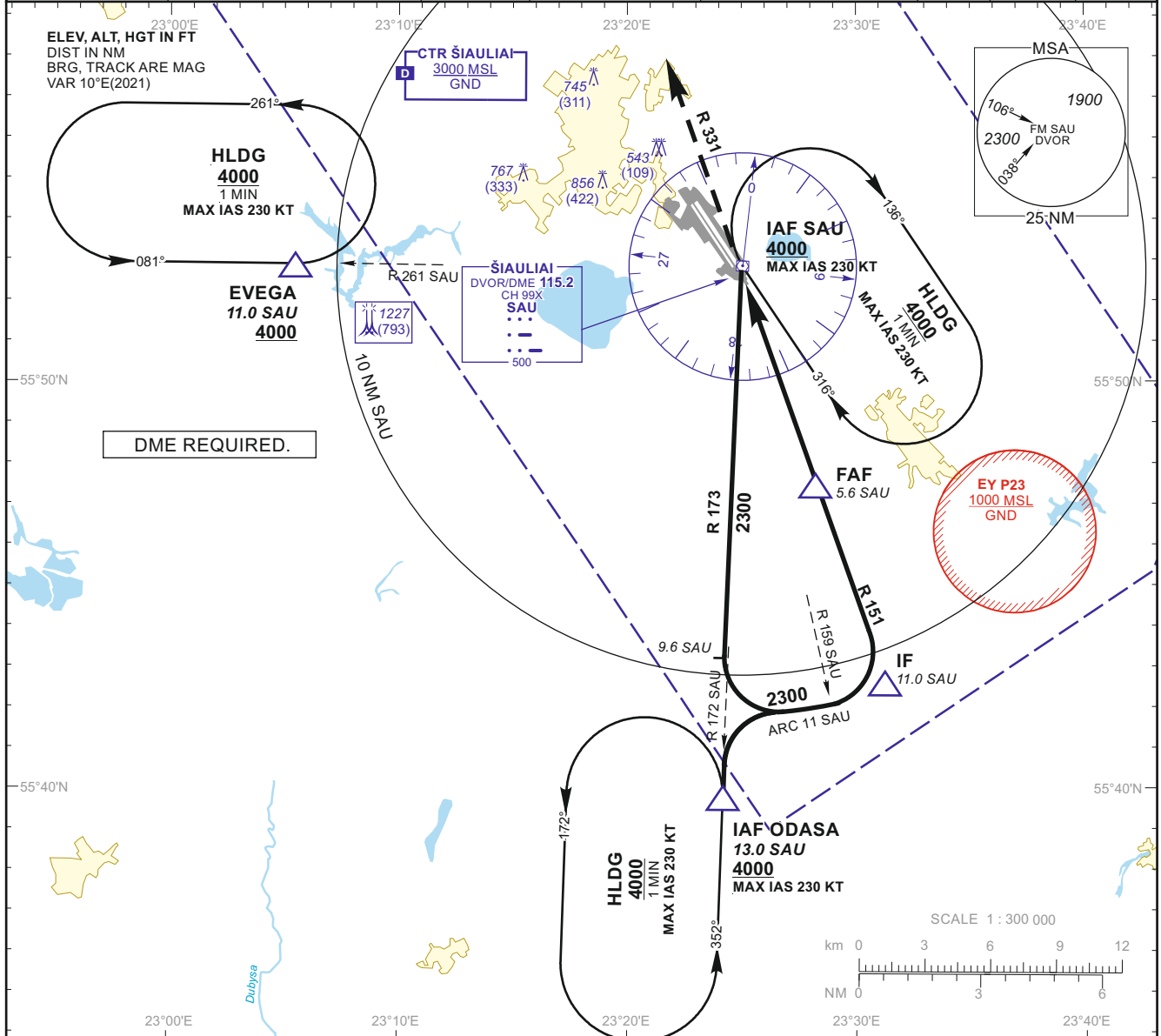
INSTRUMENT APPROACH CHART
for MILITARY ACFT
TRANSITION LEVEL By ATC
TRANSITION ALT **5000(4566)**

AERODROME ELEV 447
HEIGHTS RELATED TO
THR RWY 32L - ELEV 434

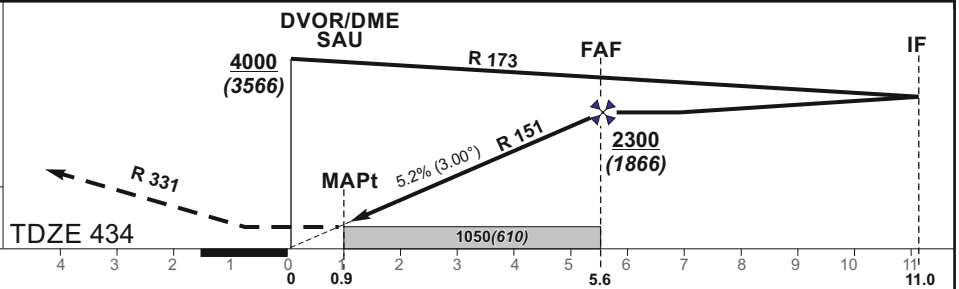
TWR 120.405
ATIS 120.755

**ŠIAULIAI
VOR
RWY 32L (MIL)**

DVOR/DME SAU CH99X	APP COURSE 331°	FAF ALT 2300	Descent GP 5.2% (3.00°)	MDA 1050	TDZE 434	ALS OUT	LDA 10643
-----------------------	--------------------	-----------------	----------------------------	----------	-------------	------------	--------------



MISSED APPROACH
Climb via SAU, then on R 331 to 2300, then turn right with MIN bank angle 25° (MAX IAS 230 KT) to SAU climbing to 4000.
Climb with 3.5% or more until passing 2300 due to airspace restriction.
Remarks:
Timing not authorized for defining the MAPt.



GS	Kts	80	100	120	140	160	180	DIST SAU	5	4	3	2
FAF - MAPt 4.7 NM	min:sec	3:31	2:49	2:21	2:01	1:46	1:34	Altitude	2130	1810	1500	1180
Rate of descent (5.2%)	ft/min	415	520	625	730	835	940	Height	(1696)	(1376)	(1066)	(746)

	STRAIGHT-IN APPROACH			CIRCLING APPROACH				
	VOR							
	MDA(H)	Full	ALS out	MDA(H)	Visibility			
A	1050 (610)	RVR 2300m	RVR 3000m	880 (440)	1500m	A		
B				1160 (710)	2400m	B		
C				RVR 2500m	RVR 3200m	1260 (810)	3600m	C
D						1350 (910)	4300m	D
E								E

Changes: MSA; missed approach; FAF; IAF; SAU altitude.

INSTRUMENT APPROACH CHART
for MILITARY ACFT
TRANSITION LEVEL By ATC
TRANSITION ALT **5000(4566)**

AERODROME ELEV 447
HEIGHTS RELATED TO
THR RWY 32L - ELEV 434

TWR 120.405
ATIS 120.755

**ŠIAULIAI
VOR
RWY 32L (MIL)**

TABULAR DESCRIPTION

VOR INSTRUMENT APPROACH for MILITARY ACFT from IAFs (SAU, ODASA)		
FIX/POINTS	COORDINATES	FIX FORMATION
EVEGA (HLDG)	55 52.87N 023 05.45E	BRG 081.02° / 11.00 NM SAU
ODASA (IAF)	56 07.72N 023 24.76E	BRG 352.25° / 13.00 NM SAU
SAU (IAF)	55 52.74N 023 24.98E	
IF	55 42.35N 023 31.27E	BRG 331.35° / 11.00 NM SAU
FAF	55 47.49N 023 28.17E	BRG 331.35° / 5.56 NM SAU
MAPt	55 51.88N 023 25.51E	BRG 331.35° / 0.91 NM SAU
THR RWY 32L	55 52.80N 023 24.42E	
Final approach descent angle: 3.00°		

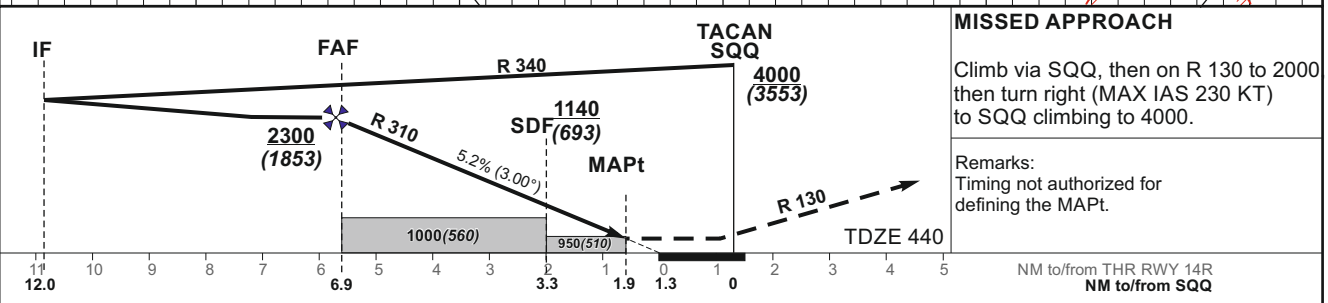
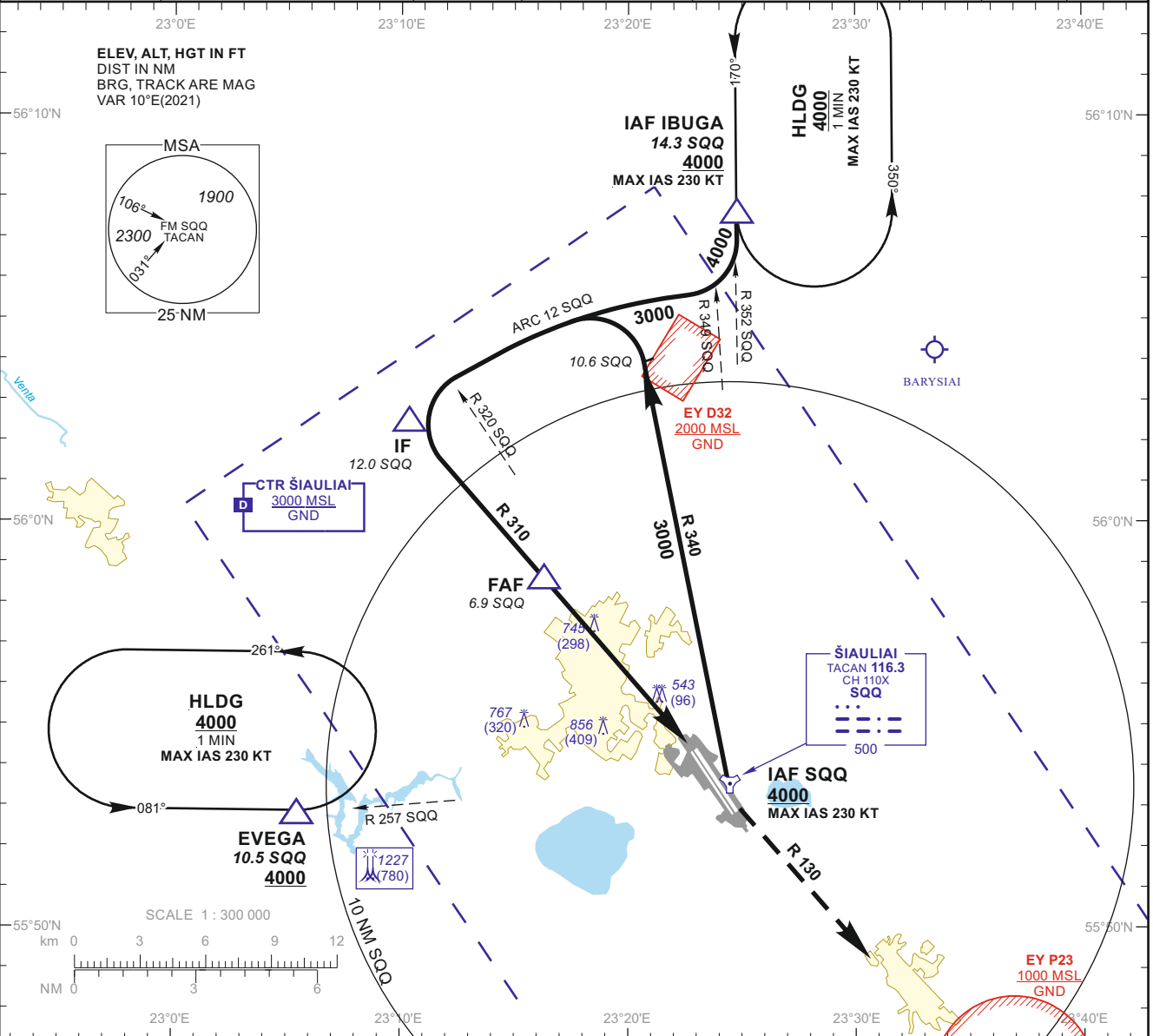
INSTRUMENT APPROACH CHART
for MILITARY ACFT
TRANSITION LEVEL By ATC
TRANSITION ALT **5000(4553)**

AERODROME ELEV 447
HEIGHTS RELATED TO AD ELEV
THR RWY 14R - ELEV 440

TWR 120.405
ATIS 120.755

ŠIAULIAI
TACAN
RWY 14R (MIL)

TACAN SQQ CH110X	APP COURSE 130°	FAF ALT 2300	Descent GP 5.2% (3.00°)	MDA 950	TDZE 440	ALS OUT	LDA 10643
---------------------	--------------------	-----------------	----------------------------	---------	-------------	------------	--------------



GS	Kts	80	100	120	140	160	180	DIST SQQ	6	5	4	3
FAF - MAPt 5.0 NM	min:sec	3:45	3:00	2:30	2:09	1:53	1:40	Altitude	2030	1720	1400	1080
Rate of descent (5.2%)	ft/min	415	520	625	730	835	940	Height	(1583)	(1273)	(953)	(633)

	STRAIGHT-IN APPROACH						CIRCLING APPROACH		A				
	TACAN			TACAN (When SDF not received)			MDA(H)	Visibility					
	MDA(H)	Full	ALS out	MDA(H)	Full	ALS out							
A	950 (510)	RVR 1500m	RVR 1500m	1000 (560)	RVR 2000m	RVR 2700m	880 (440)	1500m	A				
B							1160 (710)	2400m	B				
C							RVR 2000m	RVR 2800m	RVR 2200m	RVR 2900m	1260 (810)	3600m	C
D											1350 (910)	4300m	D
E													E

Changes: MSA; EYD32 added; minimum flight altitude; FAF; SDF and IAF SQQ altitude.

INSTRUMENT APPROACH CHART
for MILITARY ACFT
TRANSITION LEVEL By ATC
TRANSITION ALT **5000(4553)**

AERODROME ELEV 447
HEIGHTS RELATED TO AD ELEV
THR RWY 14R - ELEV 440

TWR 120.405
ATIS 120.755

ŠIAULIAI
TACAN
RWY 14R (MIL)

TABULAR DESCRIPTION

TACAN INSTRUMENT APPROACH for MILITARY ACFT from IAFs (SQQ, IBUGA)		
FIX/POINTS	COORDINATES	FIX FORMATION
EVEGA (HLDG)	55 52.87N 023 05.45E	BRG 077.32° / 10.54 NM SQQ
IBUGA (IAF)	56 07.72N 023 24.76E	BRG 171.58° / 14.32 NM SQQ
SQQ TACAN (IAF)	55 53.43N 023 24.14E	
IF	56 02.50N 023 10.20E	BRG 129.55° / 12.00 NM SQQ
FAF	55 58.64N 023 16.16E	BRG 129.55° / 6.89 NM SQQ
SDF	55 55.86N 023 20.42E	BRG 129.55° / 3.22 NM SQQ
MAPt	55 54.88N 023 21.93E	BRG 129.55° / 1.91 NM SQQ
THR RWY 14R	55 54.25N 023 22.68E	
Final approach descent angle: 3.00°		

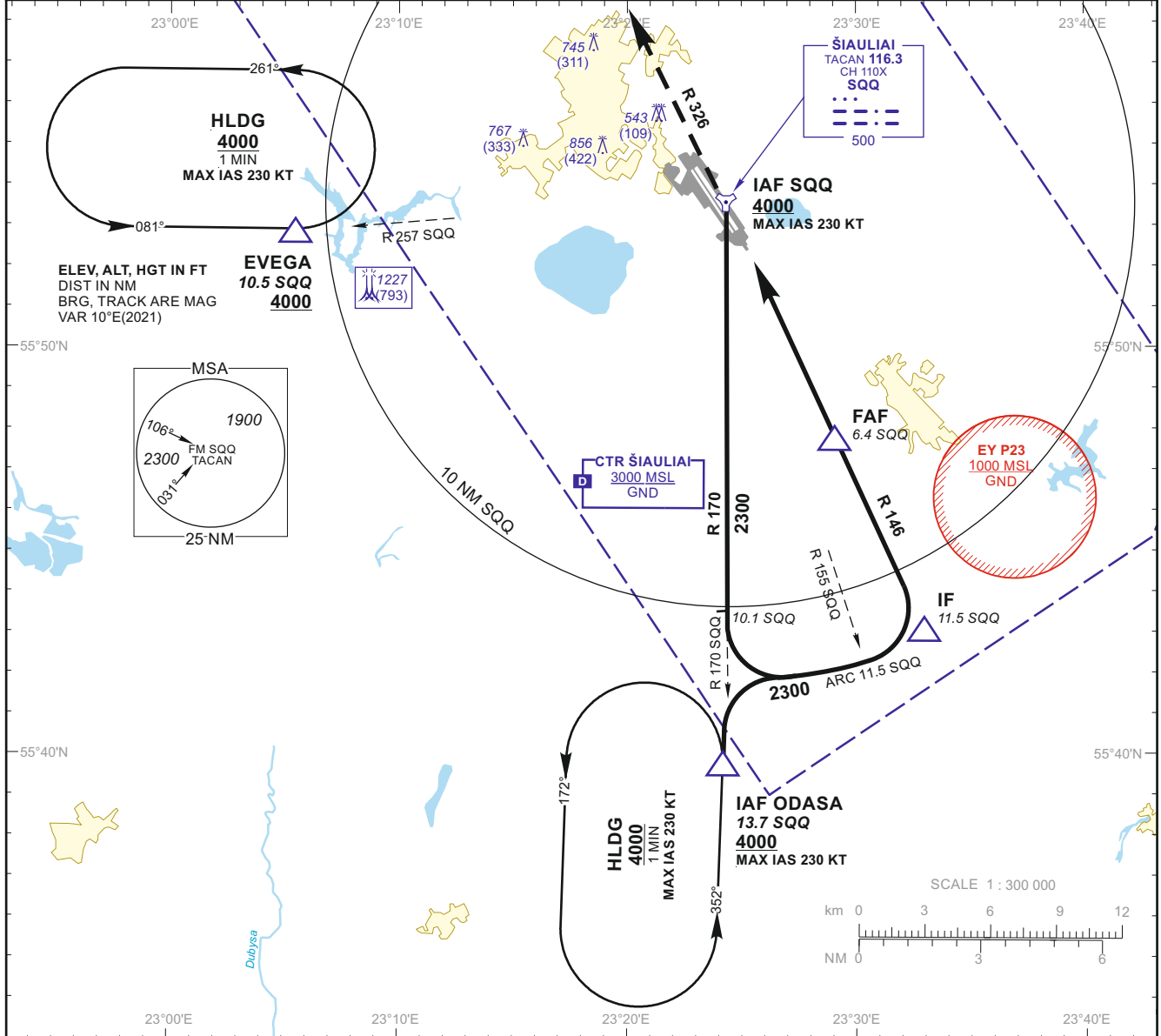
INSTRUMENT APPROACH CHART
for MILITARY ACFT
TRANSITION LEVEL By ATC
TRANSITION ALT **5000(4566)**

AERODROME ELEV 447
HEIGHTS RELATED TO
THR RWY 32L - ELEV 434

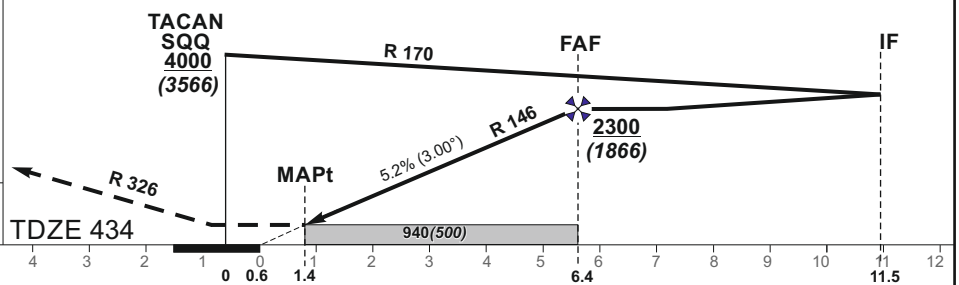
TWR 120.405
ATIS 120.755

ŠIAULIAI TACAN
RWY 32L (MIL)

TACAN SQQ CH110X	APP COURSE 326°	FAF ALT 2300	Descent GP 5.2% (3.00°)	MDA 940	TDZE 434	ALS OUT	LDA 10643
---------------------	--------------------	-----------------	----------------------------	---------	-------------	------------	--------------



MISSED APPROACH
Climb via SQQ, then on R 326 to 2300, then turn right with MIN bank angle 25° (MAX IAS 230 KT) to SQQ climbing to 4000.
Climb with 3.5% or more until passing 2300 due to airspace restriction.
Remarks:
Timing not authorized for defining the MAPt.
NM to/from THR RWY 32L
NM to/from TACAN SQQ



GS	Kts	80	100	120	140	160	180	DIST SQQ	6	5	4	3	2
FAF - MAPt 5.0 NM	min:sec	3:45	3:00	2:30	2:09	1:53	1:40	Altitude	2180	1870	1550	1240	920
Rate of descent (5.2%)	ft/min	415	520	625	730	835	940	Height	(1746)	(1436)	(1116)	(806)	(486)

	STRAIGHT-IN APPROACH			CIRCLING APPROACH				
	TACAN			TACAN				
	MDA(H)	Full	ALS out	MDA(H)	Visibility			
A	940 (500)	RVR 1500m	RVR 1500m	880 (440)	1500m	A		
B				1160 (710)	2400m	B		
C				RVR 1900m	RVR 2700m	1260 (810)	3600m	C
D						1350 (910)	4300m	D
E								E

Changes: MSA; missed approach; FAF; IAF; SQQ altitude.

INSTRUMENT APPROACH CHART
for MILITARY ACFT
TRANSITION LEVEL By ATC
TRANSITION ALT **5000(4566)**

AERODROME ELEV 447
HEIGHTS RELATED TO
THR RWY 32L - ELEV 434

TWR 120.405
ATIS 120.755

ŠIAULIAI
TACAN
RWY 32L (MIL)

TABULAR DESCRIPTION

TACAN INSTRUMENT APPROACH for MILITARY ACFT from IAFs (SQQ, ODASA)		
FIX/POINTS	COORDINATES	FIX FORMATION
EVEGA (HLDG)	55 52.87N 023 05.45E	BRG 077.32° / 10.54 NM SQQ
ODASA (IAF)	56 07.72N 023 24.76E	BRG 350.16° / 13.68 NM SQQ
SQQ TACAN (IAF)	55 53.43N 023 24.14E	
IF	55 42.98N 023 32.58E	BRG 325.71° / 11.50 NM SQQ
FAF	55 47.63N 023 28.83E	BRG 325.71° / 6.38 NM SQQ
MAPt	55 52.17N 023 25.17E	BRG 325.71° / 1.39 NM SQQ
THR RWY 32L	55 52.80N 023 24.42E	
Final approach descent angle: 3.00°		