



Phone:	+370 706 94 613	ORO NAVIGACIJA AB	AIRAC AIP SUP: 002/2024
AFS:	EYVNYOYX	Aeronautical Information Service	Effective Date: 18-Apr-2024
URL:	www.ans.lt	Balio Karvelio Str. 25	End Date: 12-Jun-2024
Email:	ais@ans.lt	LT-02184 Vilnius, Lithuania	Publication Date: 22-Feb-2024

S 002. UPDATED VILNIUS AERODROME CHARTS

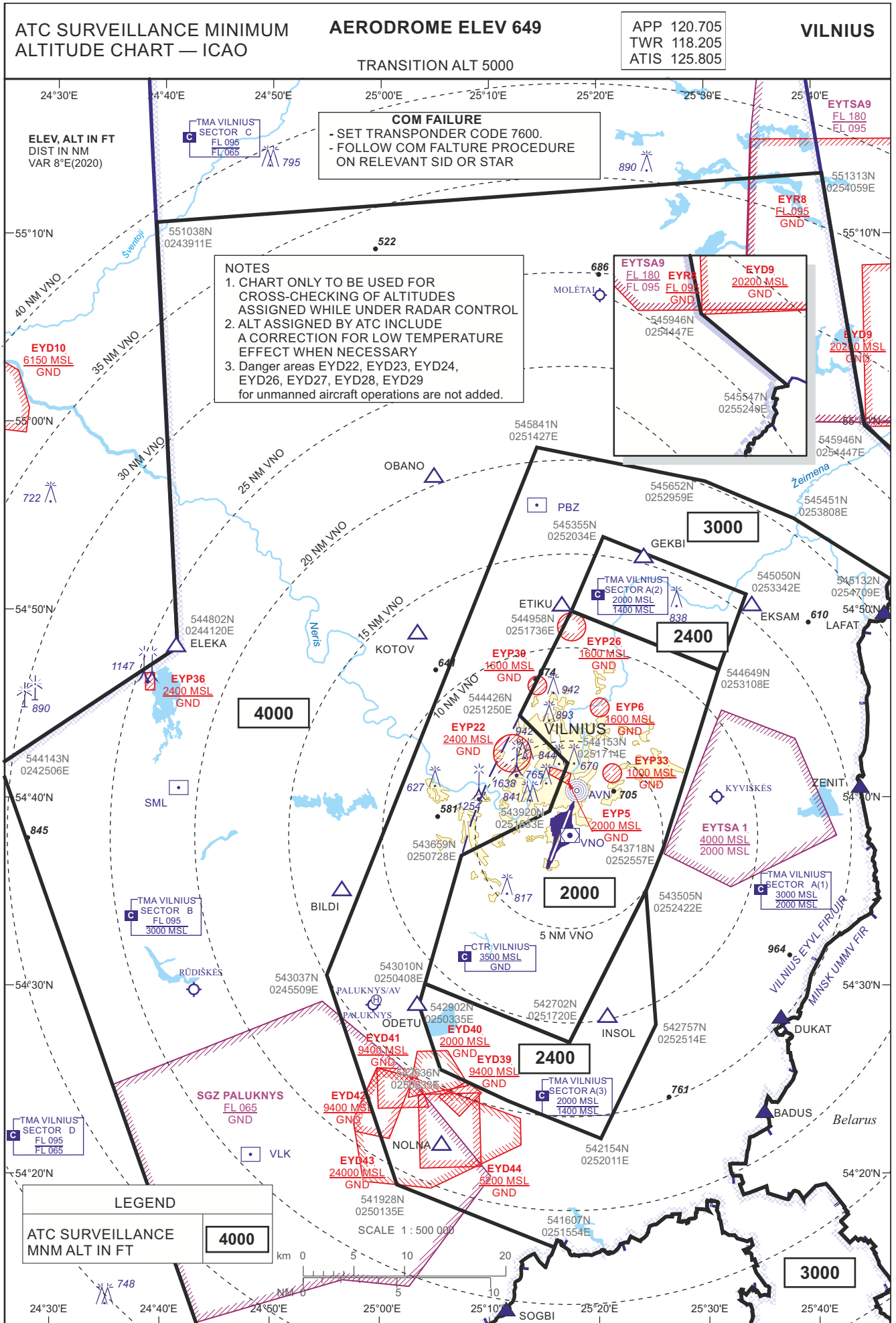
The AIP subsection EYVI AD 2.24 affected.

This AIP supplement contains Vilnius AD charts with effect from 18 of April 2024, updated due to changed airspace elements (see AIP SUP 001/2024).

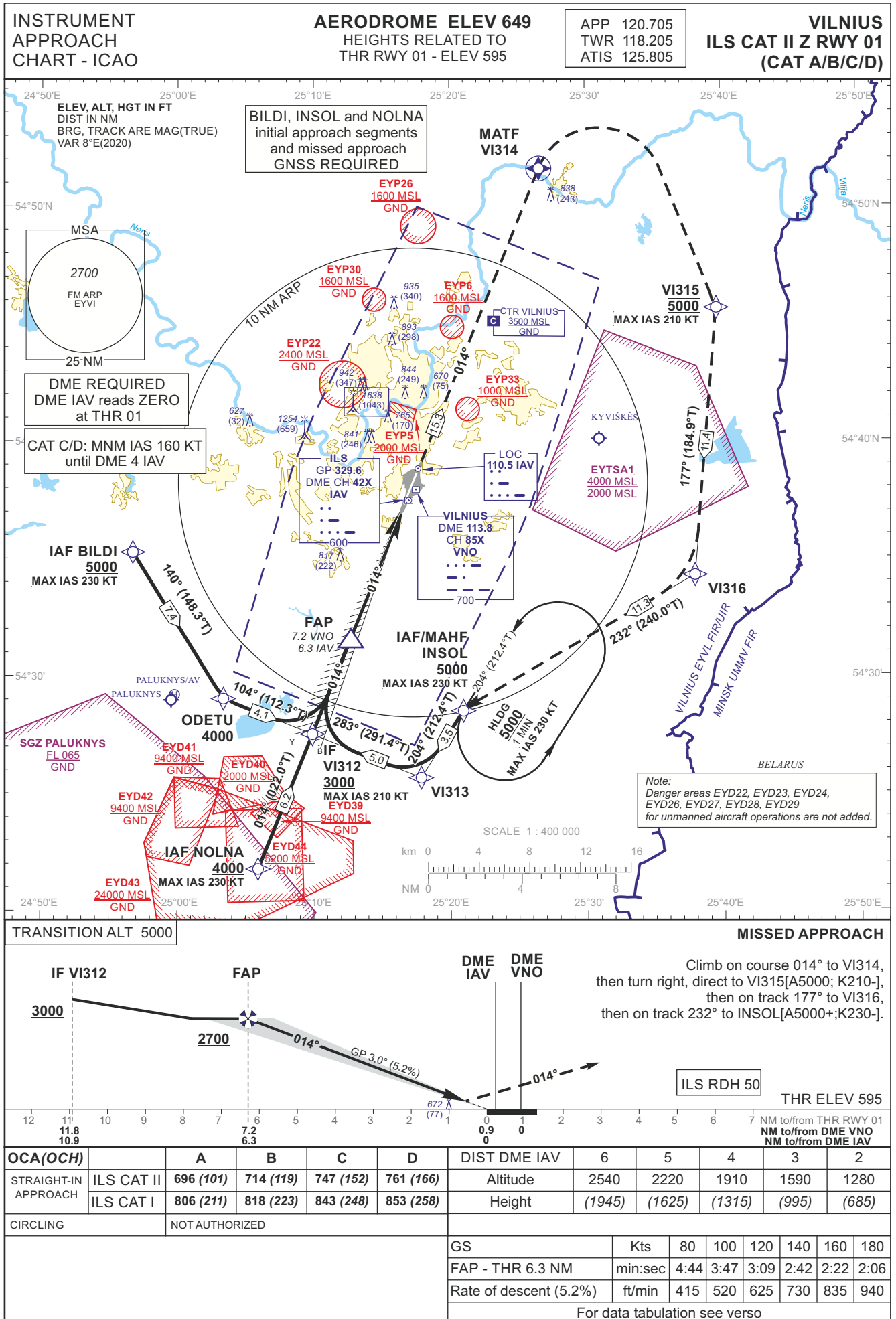
- Appendix 1. EYVI AD 2.24-19 ATC Surveillance Minimum Altitude – ICAO
- Appendix 2. EYVI AD 2.24-20 Instrument Approach Chart – ICAO ILS CAT II Z RWY 01 (CAT A/B/C/D)
- Appendix 3. EYVI AD 2.24-21 Instrument Approach Chart – ICAO ILS CAT II Y or LOC RWY 01 (CAT A/B/C/D)
- Appendix 4. EYVI AD 2.24-22 Instrument Approach Chart – ICAO ILS Z RWY 19 (CAT A/B/C/D)
- Appendix 5. EYVI AD 2.24-23 Instrument Approach Chart – ICAO ILS Y or LOC RWY 19 (CAT A/B/C/D)
- Appendix 6. EYVI AD 2.24-24 Instrument Approach Chart – ICAO RNP RWY 01
- Appendix 7. EYVI AD 2.24-25 Instrument Approach Chart – ICAO RNP RWY 19
- Appendix 8. EYVI AD 2.24-26 Instrument Approach Chart – ICAO VOR Z RWY 01 (CAT A/B)
- Appendix 9. EYVI AD 2.24-27 Instrument Approach Chart – ICAO VOR Y RWY 01 (CAT C/D)
- Appendix 10. EYVI AD 2.24-28 Instrument Approach Chart – ICAO VOR Z RWY 19 (CAT A/B)
- Appendix 11. EYVI AD 2.24-29 Instrument Approach Chart – ICAO VOR Y RWY 19 (CAT C/D)
- Appendix 12. EYVI AD 2.24-41 Visual Approach Chart RWY 01/19 – ICAO

-END-

THIS PAGE INTENTIONALLY LEFT BLANK



THIS PAGE INTENTIONALLY LEFT BLANK



INSTRUMENT APPROACH CHART - ICAO	AERODROME ELEV 649 HEIGHTS RELATED TO THR RWY 01 - ELEV 595	APP 120.705 TWR 118.205 ATIS 125.805	VILNIUS ILS CAT II Z RWY 01 (CAT A/B/C/D)
--	--	--	--

TABULAR DESCRIPTION

IAF BILDI, INITIAL APPROACH

Serial Number	Path Descriptor	Waypoint Identifier	Fly-over	Course/Track °M(°T)	Magnetic Variation	Distance (NM)/ Time	Turn Direction	Altitude (FT)/ Flight level	Speed (KT)	VPA/TCH	Navigation Specification
001	IF	BILDI	—	—	8.3	—	—	+5000	-230	—	RNAV 1
002	TF	ODETU	—	140(148.3)	8.3	7.4	—	+4000	—	—	RNAV 1
003	TF	VI312	—	104(112.3)	8.3	4.1	—	+3000	-210	—	RNAV 1

IAF INSOL, INITIAL APPROACH

Serial Number	Path Descriptor	Waypoint Identifier	Fly-over	Course/Track °M(°T)	Magnetic Variation	Distance (NM)/ Time	Turn Direction	Altitude (FT)/ Flight level	Speed (KT)	VPA/TCH	Navigation Specification
001	IF	INSOL	—	—	8.3	—	—	+5000	-230	—	RNAV 1
002	TF	VI313	—	204(212.4)	8.3	3.5	—	—	—	—	RNAV 1
003	TF	VI312	—	283(291.4)	8.3	5.0	—	+3000	-210	—	RNAV 1

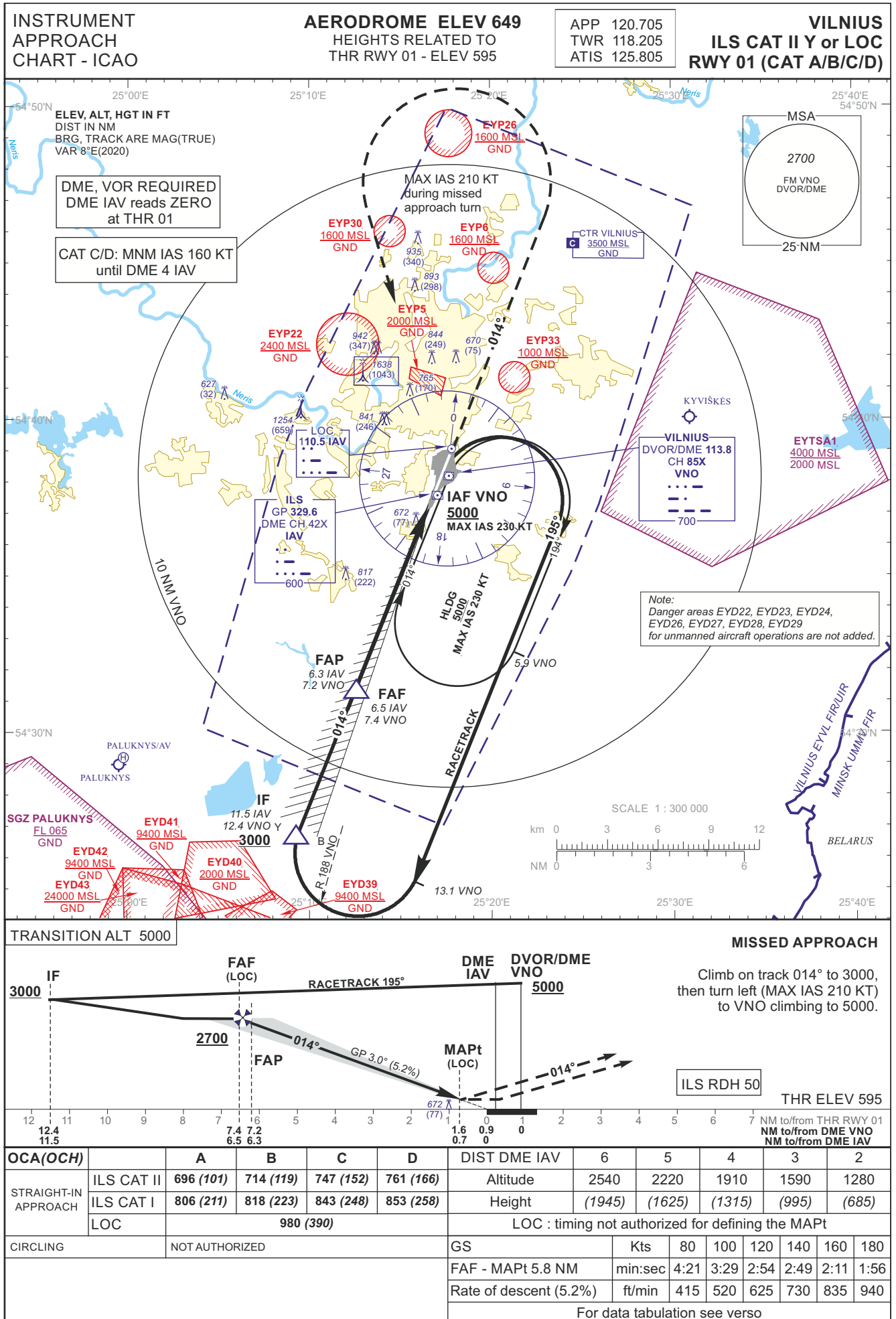
IAF NOLNA, INITIAL APPROACH

Serial Number	Path Descriptor	Waypoint Identifier	Fly-over	Course/Track °M(°T)	Magnetic Variation	Distance (NM)/ Time	Turn Direction	Altitude (FT)/ Flight level	Speed (KT)	VPA/TCH	Navigation Specification
001	IF	NOLNA	—	—	8.3	—	—	+4000	-230	—	RNAV 1
002	TF	VI312	—	014(022.0)	8.3	6.2	—	+3000	-210	—	RNAV 1

MISSED APPROACH

001	—	RW01	—	—	8.3	—	—	—	—	—	RNAV 1
002	CF	VI314	Y	014(022.0)	8.3	15.30	—	—	—	—	RNAV 1
003	DF	VI315	—	—	8.3	—	R	@5000	-210	—	RNAV 1
004	TF	VI316	—	177(184.9)	8.3	11.4	—	—	—	—	RNAV 1
005	TF	INSOL	—	232(240.0)	8.3	11.3	—	+5000	-230	—	RNAV 1
006	HM	INSOL	—	204(212.4)	8.3	1 min	L	+5000	-230	—	RNAV 1

FIX/POINTS	COORDINATES	FIX FORMATION
VNO	54 38 09.8N 025 17 37.1E	
INSOL (IAF/MAHF)	54 28 37.0N 025 21 03.5E	
BILDI (IAF)	54 35 16.4N 024 56 43.1E	
NOLNA (IAF)	54 21 46.6N 025 05 54.5E	
ODETU	54 29 01.7N 025 03 21.0E	
VI313	54 25 39.4N 025 17 49.9E	
VI312 (IF)	54 27 28.7N 025 09 51.3E	11.62 NM VNO ; BRG 013.66° / 10.73 NM IAV
FAP	54 31 32.7N 025 12 39.1E	7.23 NM VNO ; BRG 013.66° / 6.34 NM IAV
RW01	54 37 25.27N 025 16 42.70E	
VI314 (MATF)	54 51 35.4N 025 26 35.3E	
VI315	54 45 39.1N 025 39 36.6E	
VI316	54 34 16.1N 025 37 56.0E	
DME IAV	54 37 33.7N 025 16 55.8E	
LOC IAV	54 38 55.0N 025 17 44.9E	



INSTRUMENT
APPROACH
CHART - ICAO

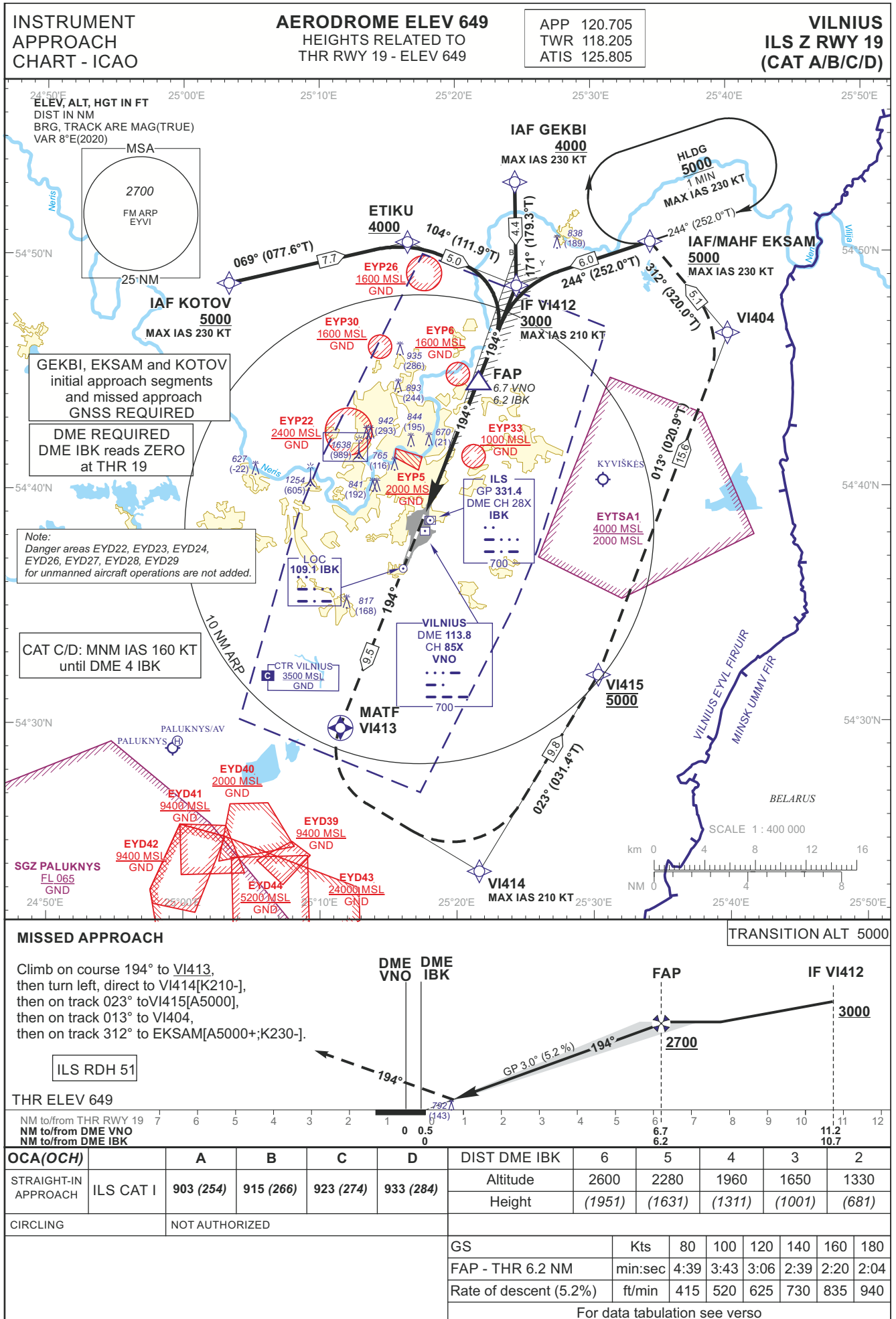
AERODROME ELEV 649
HEIGHTS RELATED TO
THR RWY 01 - ELEV 595

APP 120.705
TWR 118.205
ATIS 125.805

VILNIUS
ILS CAT II Y or LOC
RWY 01 (CAT A/B/C/D)

TABULAR DESCRIPTION

ILS or LOC INSTRUMENT APPROACH from IAF (VNO)		
FIX/POINTS	COORDINATES	FIX FORMATION
VNO (IAF)	54 38 09.8N 025 17 37.1E	
IF	54 26 45.4N 025 09 21.6E	BRG 014.63° / 12.40 NM VNO ; BRG 013.66° / 11.51 NM IAV
FAF	54 31 23.5N 025 12 32.8E	BRG 015.30° / 7.40 NM VNO ; BRG 013.66° / 6.51 NM IAV
FAP	54 31 32.7N 025 12 39.1E	BRG 015.33° / 7.23 NM VNO ; BRG 013.66° / 6.34 NM IAV
MAPt	54 36 46.4N 025 16 15.8E	BRG 021.25° / 1.60 NM VNO ; BRG 013.66° / 0.70 NM IAV
THR RWY 01	54 37 25.27N 025 16 42.70E	
LOC IAV	54 38 55.0N 025 17 44.9E	
DME IAV	54 37 33.7N 025 16 55.8E	
Final approach (LOC) descent angle: 3.00°		

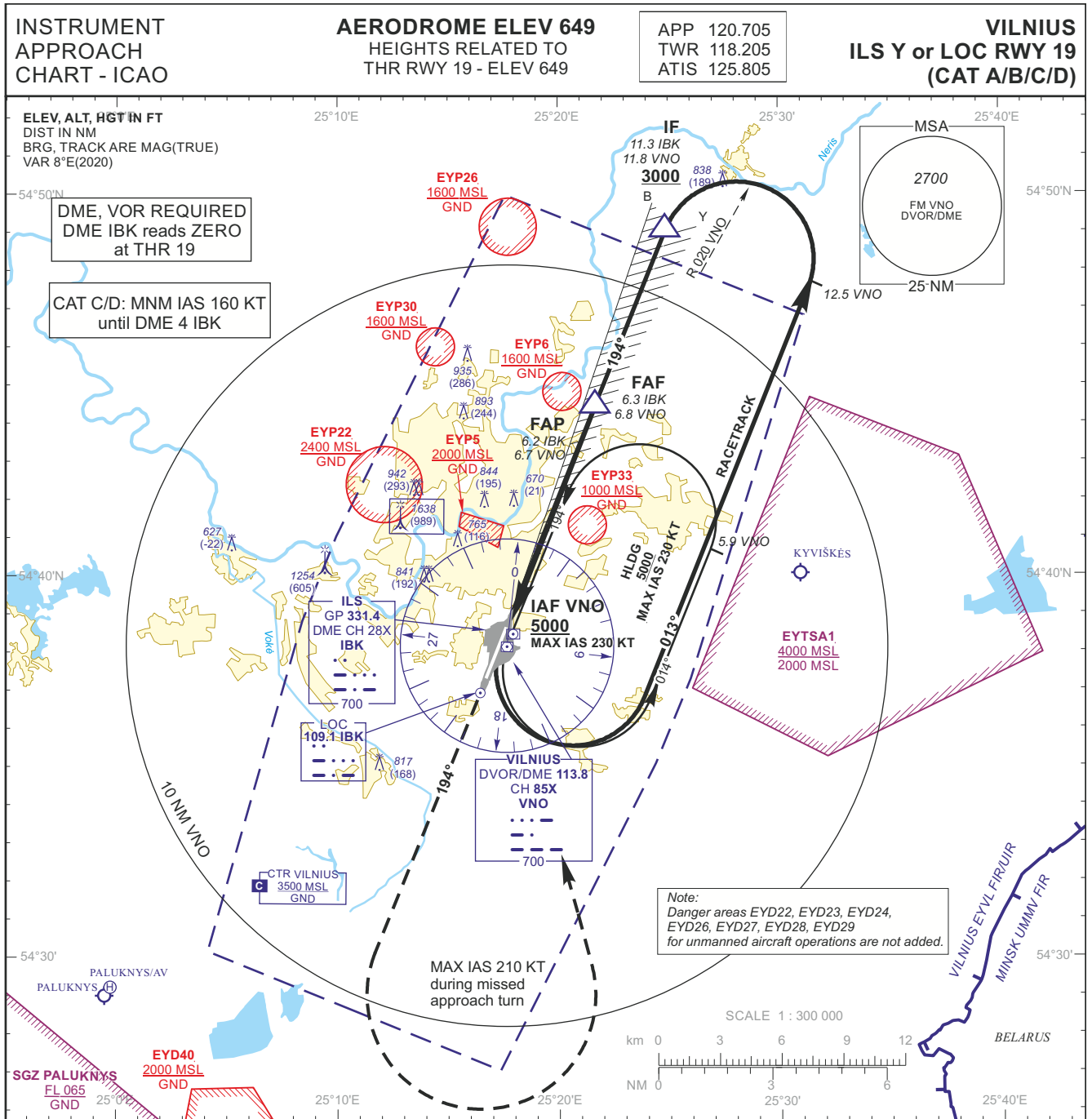


INSTRUMENT APPROACH CHART - ICAO	AERODROME ELEV 649 HEIGHTS RELATED TO THR RWY 19 - ELEV 649	APP 120.705 TWR 118.205 ATIS 125.805	VILNIUS ILS Z RWY 19 (CAT A/B/C/D)
--	--	--	---

TABULAR DESCRIPTION

Serial Number	Path Descriptor	Waypoint Identifier	Fly-over	Course/Track °M(°T)	Magnetic Variation	Distance (NM)/ Time	Turn Direction	Altitude (FT)/ Flight level	Speed (KT)	VPA/TCH	Navigation Specification
IAF EKSAM, INITIAL APPROACH											
001	IF	EKSAM	—	—	8.3	—	—	+5000	-230	—	RNAV 1
002	TF	VI412	—	244(252.0)	8.3	6.0	—	+3000	-210	—	RNAV 1
IAF GEKBI, INITIAL APPROACH											
001	IF	GEKBI	—	—	8.3	—	—	+4000	-230	—	RNAV 1
002	TF	VI412	—	171(179.3)	8.3	4.4	—	+3000	-210	—	RNAV 1
IAF KOTOV, INITIAL APPROACH											
001	IF	KOTOV	—	—	8.3	—	—	+5000	-230	—	RNAV 1
002	TF	ETIKU	—	069(077.6)	8.3	7.7	—	+4000	—	—	RNAV 1
003	TF	VI412	—	104(111.9)	8.3	5.0	—	+3000	210	—	RNAV 1
MISSED APPROACH											
001	—	RW19	—	—	8.3	—	—	—	—	—	RNAV 1
002	CF	VI413	Y	194(201.8)	8.3	9.50	—	—	—	—	RNAV 1
003	DF	VI414	—	—	8.3	—	L	—	-210	—	RNAV 1
004	TF	VI415	—	023(031.4)	8.3	9.8	—	@5000	—	—	RNAV 1
005	TF	VI404	—	013(020.9)	8.3	15.6	—	—	—	—	RNAV 1
006	TF	EKSAM	—	312(320.0)	8.3	5.1	—	+5000	-230	—	RNAV 1
007	HM	EKSAM	—	244(252.0)	8.3	1 min	R	+5000	-230	—	RNAV 1

FIX/POINTS	COORDINATES	FIX FORMATION
VNO	54 38 09.8N 025 17 37.1E	
GEKBI (IAF)	54 53 01.4N 025 24 24.6E	
EKSAM (IAF/MAHF)	54 50 28.1N 025 34 22.5E	
KOTOV (IAF)	54 48 48.5N 025 03 25.3E	
ETIKU	54 50 28.9N 025 16 28.8E	
VI412 (IF)	54 48 37.4N 025 24 30.6E	11.22 NM VNO ; BRG 193.64° / 10.74 NM IBK
FAP	54 44 24.0N 025 21 33.6E	6.65 NM VNO ; BRG 193.64° / 6.18 NM IBK
RW19	54 38 40.73N 025 17 34.99E	
VI413 (MATF)	54 29 52.5N 025 11 30.2E	
VI414	54 23 40.3N 025 21 37.7E	
VI415	54 32 01.1N 025 30 23.8E	
VI404	54 46 34.0N 025 40 02.2E	
LOC IBK	54 36 59.4N 025 16 24.8E	
DME IBK	54 38 29.0N 025 17 34.2E	



MISSED APPROACH TRANSITION ALT 5000

Climb on track 194° to 2400, then turn left (MAX IAS 210 KT) to VNO climbing to 5000.

ILS RDH 51

THR ELEV 649

NM to/from THR RWY 19	7	6	5	4	3	2	1	0	0.5	1.2	3.5	6.7	6.8	11.8
NM to/from DME VNO														
NM to/from DME IBK														

OCA(OCH)		A	B	C	D	DIST DME IBK	6	5	4	3	2		
STRAIGHT-IN APPROACH	ILS CAT I	903 (254)	915 (266)	923 (274)	933 (284)	Altitude	2600	2280	1960	1650	1330		
	LOC	1040 (400)				Height	(1951)	(1631)	(1311)	(1001)	(681)		
	LOC (when SDF not received)	1070 (420)				LOC : timing not authorized for defining the MAPt							
CIRCLING	NOT AUTHORIZED					GS	Kts	80	100	120	140	160	180
						FAF - MAPt 5.6 NM	min:sec	4:12	3:21	2:48	2:24	2:06	1:52
						Rate of descent (5.2%)	ft/min	415	520	625	730	835	940

For data tabulation see verso

INSTRUMENT
APPROACH
CHART - ICAO

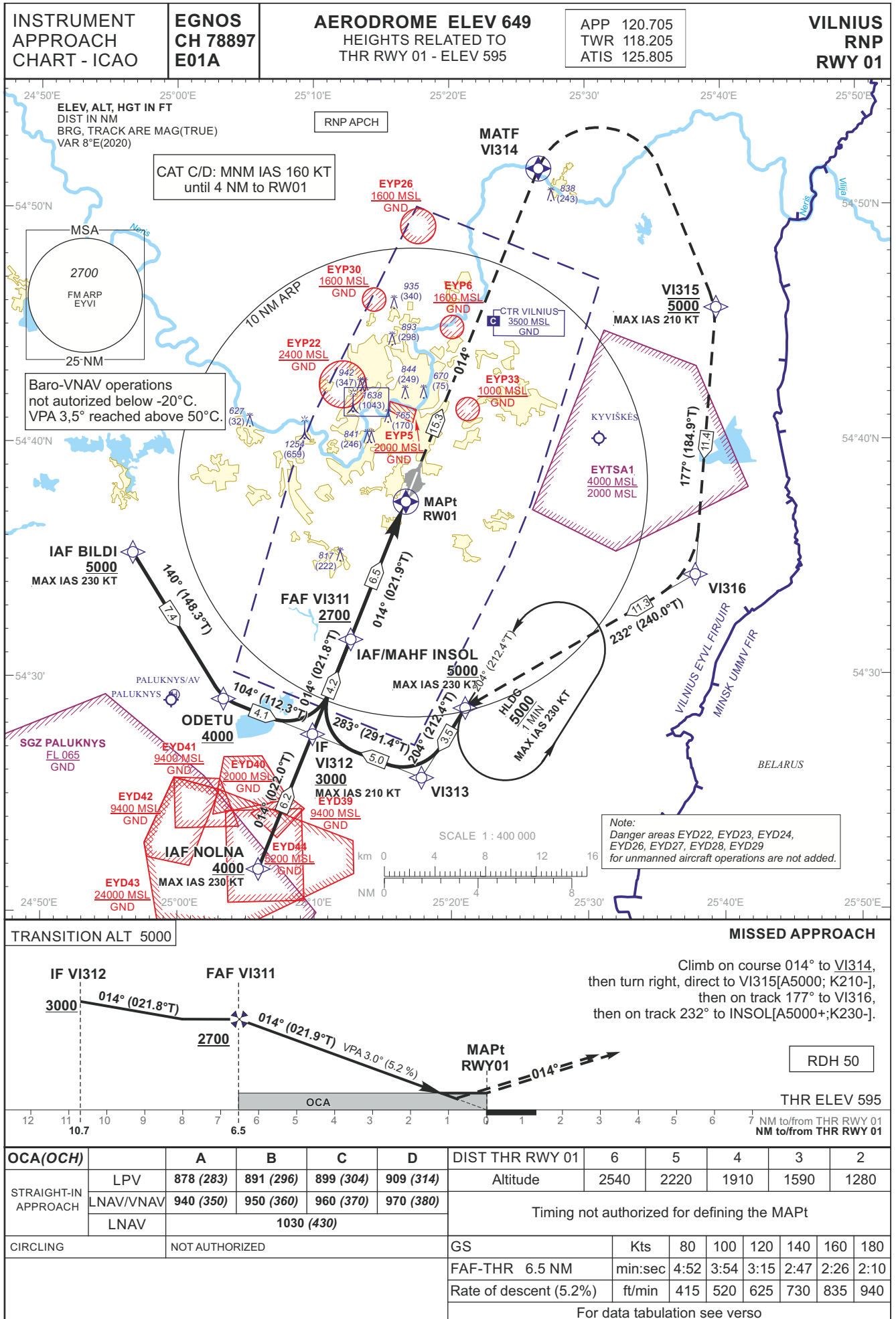
AERODROME ELEV 649
HEIGHTS RELATED TO
THR RWY 19 - ELEV 649

APP 120.705
TWR 118.205
ATIS 125.805

VILNIUS
ILS Y or LOC RWY 19
(CAT A/B/C/D)

TABULAR DESCRIPTION

ILS or LOC INSTRUMENT APPROACH from IAF (VNO)		
FIX/POINTS	COORDINATES	FIX FORMATION
VNO (IAF)	54 38 09.8N 025 17 37.1E	
IF	54 49 10.7N 025 24 53.9E	BRG 192.63° / 11.81 NM VNO ; BRG 193.64° / 11.34 NM IBK
FAF	54 44 32.9N 025 21 39.8E	BRG 191.88° / 6.81 NM VNO ; BRG 193.64° / 6.34 NM IBK
FAP	54 44 24.0N 025 21 33.6E	BRG 191.84° / 6.65 NM VNO ; BRG 193.64° / 6.18 NM IBK
SDF	54 41 28.2N 025 19 31.3E	BRG 190.18° / 3.49 NM VNO ; BRG 193.64° / 3.02 NM IBK
MAPt	54 39 19.6N 025 18 02.0E	BRG 183.42° / 1.19 NM VNO ; BRG 193.64° / 0.70 NM IBK
THR RWY 19	54 38 40.73N 025 17 34.99E	
LOC IBK	54 36 59.4N 025 16 24.8E	
DME IBK	54 38 29.0N 025 17 34.2E	
Final approach (LOC) descent angle: 3.00°		



INSTRUMENT APPROACH CHART - ICAO	EGNOS CH 78897 E01A	AERODROME ELEV 649 HEIGHTS RELATED TO THR RWY 01 - ELEV 595	APP 120.705 TWR 118.205 ATIS 125.805	VILNIUS RNP RWY 01
---	----------------------------	---	--	---------------------------

TABULAR DESCRIPTION

IAF BILDI

Serial Number	Path Descriptor	Waypoint Identifier	Fly-over	Course/Track °M(°T)	Magnetic Variation	Distance (NM)/ Time	Turn Direction	Altitude (FT)/ Flight level	Speed (KT)	VPA/TCH	Navigation Specification
001	IF	BILDI	—	—	8.3	—	—	+5000	-230	—	RNP APCH
002	TF	ODETU	—	140(148.3)	8.3	7.4	—	+4000	—	—	RNP APCH
003	TF	VI312	—	104(112.3)	8.3	4.1	—	+3000	-210	—	RNP APCH

IAF INSOL

Serial Number	Path Descriptor	Waypoint Identifier	Fly-over	Course/Track °M(°T)	Magnetic Variation	Distance (NM)/ Time	Turn Direction	Altitude (FT)/ Flight level	Speed (KT)	VPA/TCH	Navigation Specification
001	IF	INSOL	—	—	8.3	—	—	+5000	-230	—	RNP APCH
002	TF	VI313	—	204(212.4)	8.3	3.5	—	—	—	—	RNP APCH
003	TF	VI312	—	283(291.4)	8.3	5.0	—	+3000	-210	—	RNP APCH

IAF NOLNA

Serial Number	Path Descriptor	Waypoint Identifier	Fly-over	Course/Track °M(°T)	Magnetic Variation	Distance (NM)/ Time	Turn Direction	Altitude (FT)/ Flight level	Speed (KT)	VPA/TCH	Navigation Specification
001	IF	NOLNA	—	—	8.3	—	—	+4000	-230	—	RNP APCH
002	TF	VI312	—	014(022.0)	8.3	6.2	—	+3000	-210	—	RNP APCH
001	IF	VI312	—	—	8.3	—	—	+3000	-210	—	RNP APCH
002	TF	VI311	—	014(021.84)	8.3	4.22	—	+2700	—	—	RNP APCH
003	TF	RW01	Y	014(021.90)	8.3	6.51	—	@645	—	-3.00/50	RNP APCH
004	CF	VI314	Y	014(022.03)	8.3	15.30	—	—	—	—	RNP APCH
005	DF	VI315	—	—	8.3	—	R	@5000	-210	—	RNP APCH
006	TF	VI316	—	177(184.9)	8.3	11.4	—	—	—	—	RNP APCH
007	TF	INSOL	—	232(240.0)	8.3	11.3	—	+5000	-230	—	RNP APCH
008	HM	INSOL	—	204(212.4)	8.3	1 min	L	+5000	-230	—	RNAV 1

WAYPOINT COORDINATES

FIX/POINTS	COORDINATES	FIX/POINTS	COORDINATES
INSOL (IAF/MAHF)	54 28 37.0N 025 21 03.5E	VI311 (FAF)	54 31 23.4N 025 12 32.7E
BILDI (IAF)	54 35 16.4N 024 56 43.1E	FAP	54 31 32.7N 025 12 39.1E
NOLNA (IAF)	54 21 46.6N 025 05 54.5E	RW01 (MAPt)	54 37 25.3N 025 16 42.7E
ODETU	54 29 01.7N 025 03 21.0E	VI314 (MATF)	54 51 35.4N 025 26 35.3E
VI313	54 25 39.4N 025 17 49.9E	VI315	54 45 39.1N 025 39 36.6E
VI312 (IF)	54 27 28.7N 025 09 51.3E	VI316	54 34 16.1N 025 37 56.0E

INSTRUMENT APPROACH CHART - ICAO	EGNOS CH 78897 E01A	AERODROME ELEV 649 HEIGHTS RELATED TO THR RWY 01 - ELEV 595	APP 120.705 TWR 118.205 ATIS 125.805	VILNIUS RNP RWY 01
--	---------------------------	--	--	-----------------------------------

**SBAS FAS Data Block
Input Data**

Parameters	Values
Operation	0
SBAS Provider Identifier	1
Airport Identifier	EYVI
Runway Number	01
Runway Letter	0
Approach Performance Designator	0
Route Indicator	
Reference Path Data Selector	0
Reference Path Identifier	E01A
LTP/FTP Latitude	543725.2690N
LTP/FTP Longitude	0251642.7000E
LTP/FTP Height above ellipsoid (meters)	206.4
FPAP Latitude	543845.8010N
Delta FPAP Latitude (seconds)	80.5320
FPAP Longitude	0251738.5095E
Delta FPAP Longitude (seconds)	55.8095
Approach Threshold Crossing Height (TCH)	50.0
Approach TCH Units Selector	0
Glidepath Angle (GPA)	3.00
Course Width at threshold (meters)	105.00
Length Offset (meters)	168
Horizontal Alert Limit (HAL) (meters)	40.0
Vertical Alert Limit (VAL) (meters)	50.0
Final Approach Segment CRC	5926EE4C

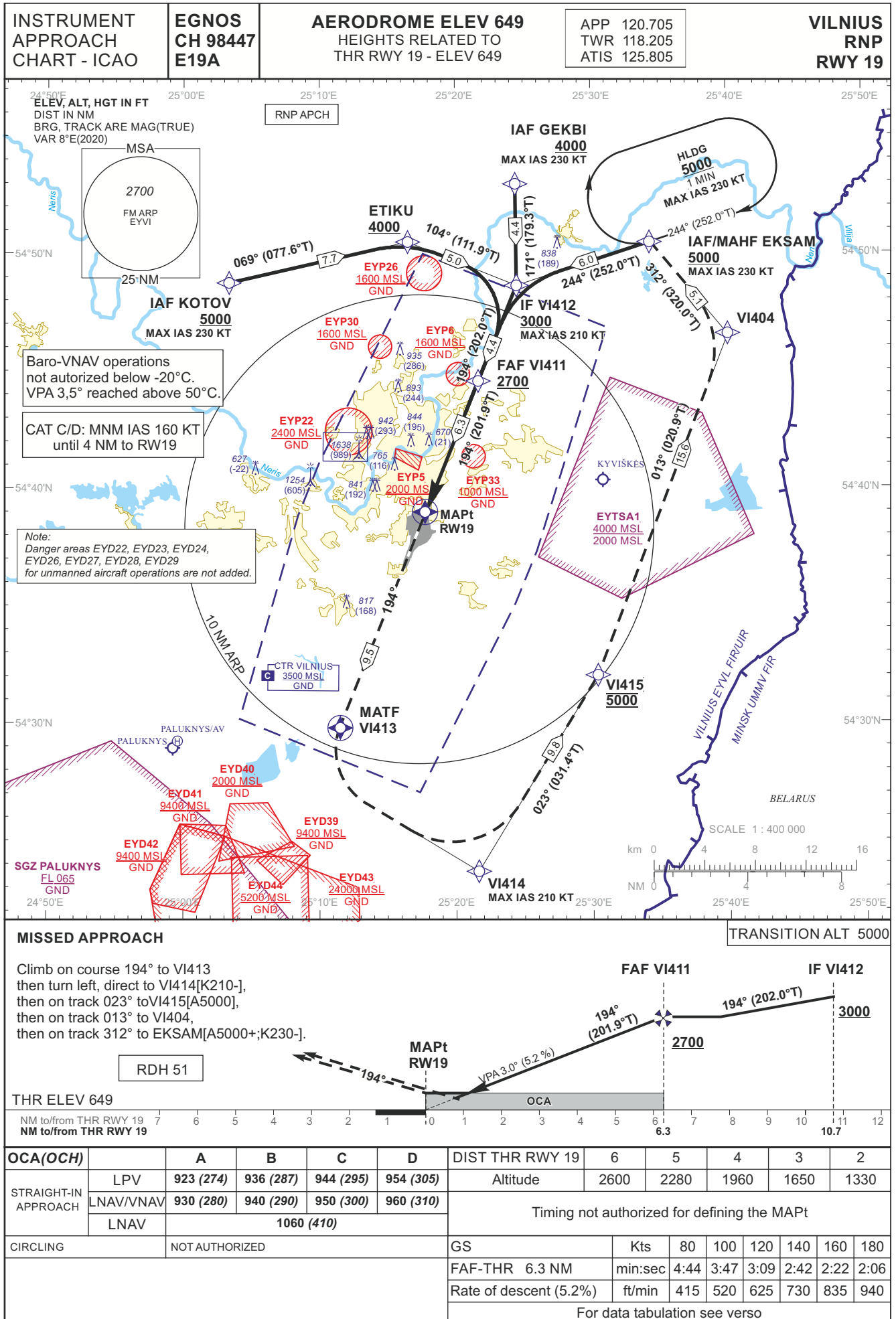
Output Data

Data Block	10 09 16 19 05 01 00 00 01 31 30 05 2A 23 71 17 98 2E D9 0A 10 1C 28 75 02 03 B4 01 F4 01 2C 01 64 15 C8 FA 59 26 EE 4C
------------	--

Required Additional Data (not CRC wrapped)

ICAO Code	EY
LTP/FTP Orthometric Height (meters)	181.4
FPAP Orthometric Height (meters)	195.1

THIS PAGE INTENTIONALLY LEFT BLANK



INSTRUMENT APPROACH CHART - ICAO	EGNOS CH 98447 E19A	AERODROME ELEV 649 HEIGHTS RELATED TO THR RWY 19 - ELEV 649	APP 120.705 TWR 118.205 ATIS 125.805	VILNIUS RNP RWY 19
----------------------------------	---------------------	---	--	---------------------------

TABULAR DESCRIPTION

IAF EKSAM

Serial Number	Path Descriptor	Waypoint Identifier	Fly-over	Course/Track °M(°T)	Magnetic Variation	Distance (NM)/ Time	Turn Direction	Altitude (FT)/ Flight level	Speed (KT)	VPA/TCH	Navigation Specification
001	IF	EKSAM	—	—	8.3	—	—	+5000	-230	—	RNP APCH
002	TF	VI412	—	244(252.0)	8.3	6.0	—	+3000	-210	—	RNP APCH

IAF GEKBI

Serial Number	Path Descriptor	Waypoint Identifier	Fly-over	Course/Track °M(°T)	Magnetic Variation	Distance (NM)/ Time	Turn Direction	Altitude (FT)/ Flight level	Speed (KT)	VPA/TCH	Navigation Specification
001	IF	GEKBI	—	—	8.3	—	—	+4000	-230	—	RNP APCH
002	TF	VI412	—	171(179.3)	8.3	4.4	—	+3000	-210	—	RNP APCH

IAF KOTOV

Serial Number	Path Descriptor	Waypoint Identifier	Fly-over	Course/Track °M(°T)	Magnetic Variation	Distance (NM)/ Time	Turn Direction	Altitude (FT)/ Flight level	Speed (KT)	VPA/TCH	Navigation Specification
001	IF	KOTOV	—	—	8.3	—	—	+5000	-230	—	RNP APCH
002	TF	ETIKU	—	069(077.6)	8.3	7.7	—	+4000	—	—	RNP APCH
003	TF	VI412	—	104(111.9)	8.3	5.0	—	+3000	-210	—	RNP APCH

001	IF	VI412	—	—	8.3	—	—	+3000	-210	—	RNP APCH
002	TF	VI411	—	194(201.96)	8.3	4.40	—	+2700	—	—	RNP APCH
003	TF	RW19	Y	194(201.91)	8.3	6.34	—	@700	—	-3.00/51	RNP APCH
004	CF	VI413	Y	194(201.82)	8.3	9.50	—	—	—	—	RNP APCH
005	DF	VI414	—	—	8.3	—	L	—	-210	—	RNP APCH
006	TF	VI415	—	023(031.4)	8.3	9.8	—	@5000	—	—	RNP APCH
007	TF	VI404	—	013(020.9)	8.3	15.6	—	—	—	—	RNP APCH
008	TF	EKSAM	—	312(320.0)	8.3	5.1	—	+5000	-230	—	RNP APCH
009	HM	EKSAM	—	244(252.0)	8.3	1 min	R	+5000	-230	—	RNAV 1

WAYPOINT COORDINATES

FIX/POINTS	COORDINATES	FIX/POINTS	COORDINATES
EKSAM (IAF/MAHF)	54 50 28.1N 025 34 22.5E	FAP	54 44 24.0N 025 21 33.6E
GEKBI (IAF)	54 53 01.4N 025 24 24.6E	RW19 (MAPt)	54 38 40.7N 025 17 35.0E
KOTOV (IAF)	54 48 48.5N 025 03 25.3E	VI413 (MATF)	54 29 52.5N 025 11 30.2E
ETIKU	54 50 28.9N 025 16 28.8E	VI414	54 23 40.3N 025 21 37.7E
VI412 (IF)	54 48 37.4N 025 24 30.6E	VI415	54 32 01.1N 025 30 23.8E
VI411 (FAF)	54 44 33.3N 025 21 40.1E	VI404	54 46 34.0N 025 40 02.2E

INSTRUMENT APPROACH CHART - ICAO	EGNOS CH 98447 E19A	AERODROME ELEV 649 HEIGHTS RELATED TO THR RWY 19 - ELEV 649	APP 120.705 TWR 118.205 ATIS 125.805	VILNIUS RNP RWY 19
--	---------------------------	---	--	--------------------------

**SBAS FAS Data Block
Input Data**

Parameters	Values
Operation	0
SBAS Provider Identifier	1
Airport Identifier	EYVI
Runway Number	19
Runway Letter	0
Approach Performance Designator	0
Route Indicator	
Reference Path Data Selector	0
Reference Path Identifier	E19A
LTP/FTP Latitude	543840.7320N
LTP/FTP Longitude	0251734.9950E
LTP/FTP Height above ellipsoid (meters)	222.7
FPAP Latitude	543708.5455N
Delta FPAP Latitude (seconds)	-92.1865
FPAP Longitude	0251631.1190E
Delta FPAP Longitude (seconds)	-63.8760
Approach Threshold Crossing Height (TCH)	51.0
Approach TCH Units Selector	0
Glidepath Angle (GPA)	3.00
Course Width at threshold (meters)	105.00
Length Offset (meters)	560
Horizontal Alert Limit (HAL) (meters)	40.0
Vertical Alert Limit (VAL) (meters)	50.0
Final Approach Segment CRC	722231A5

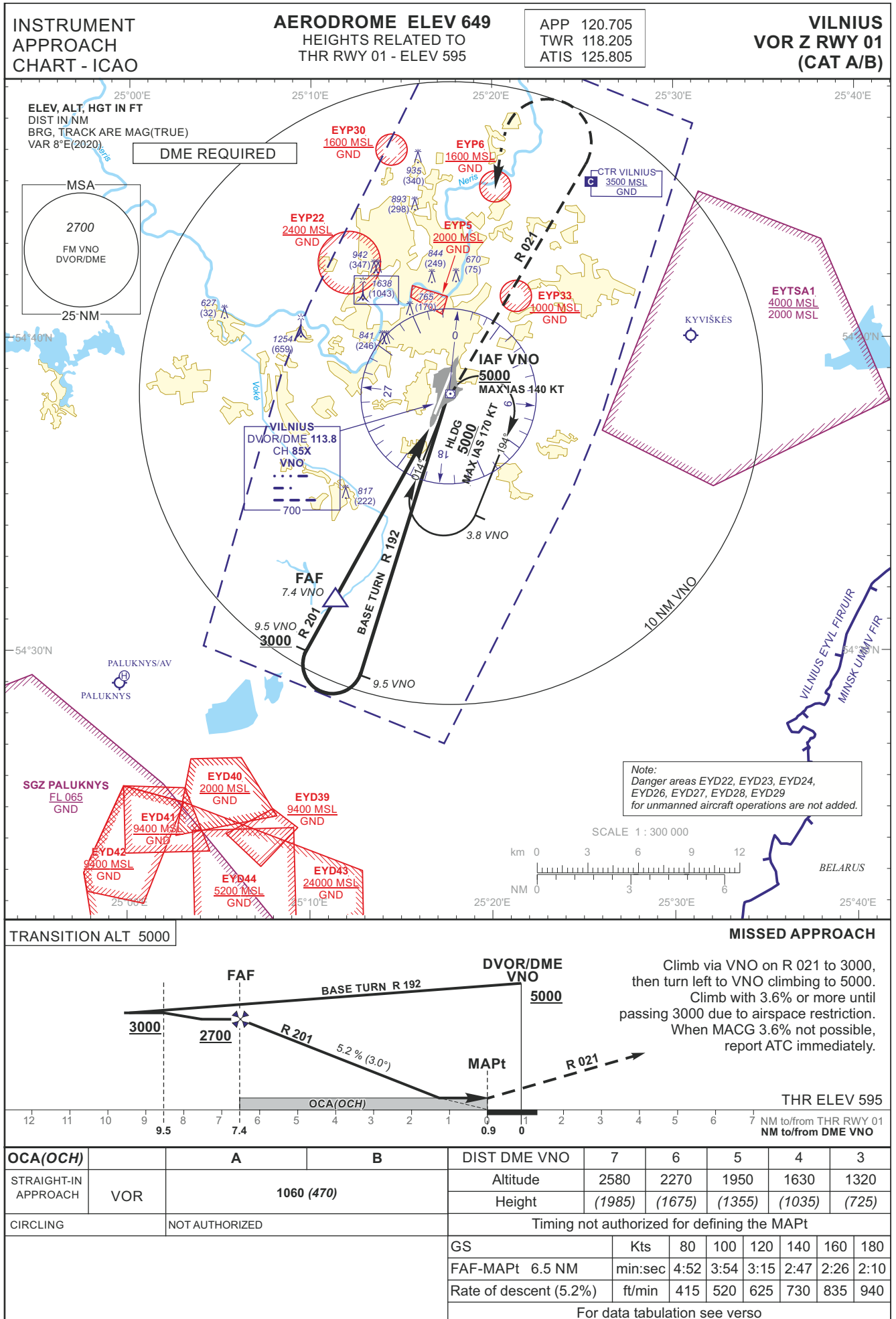
Output Data

Data Block	10 09 16 19 05 13 00 00 01 39 31 05 B8 70 73 17 26 C7 DA 0A B3 1C CB 2F FD F8 0C FE FE 01 2C 01 64 46 C8 FA 72 22 31 A5
------------	--

Required Additional Data (not CRC wrapped)

ICAO Code	EY
LTP/FTP Orthometric Height (meters)	197.7
FPAP Orthometric Height (meters)	185.8

THIS PAGE INTENTIONALLY LEFT BLANK



INSTRUMENT
APPROACH
CHART - ICAO

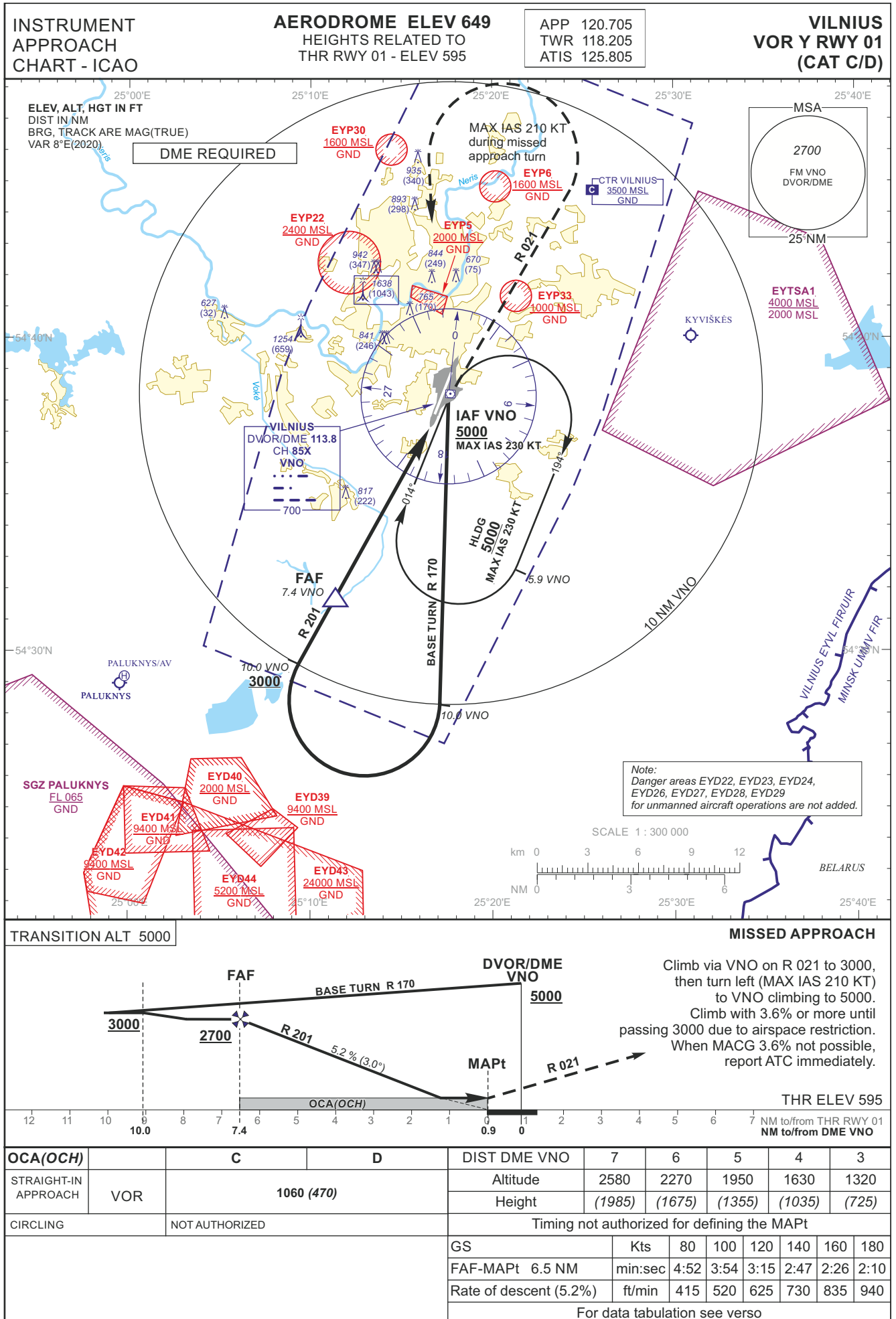
AERODROME ELEV 649
HEIGHTS RELATED TO
THR RWY 01 - ELEV 595

APP 120.705
TWR 118.205
ATIS 125.805

VILNIUS
VOR Z RWY 01
(CAT A/B)

TABULAR DESCRIPTION

VOR INSTRUMENT APPROACH from IAF(VNO)		
FIX/POINTS	COORDINATES	FIX FORMATION
VNO (IAF)	54 38 09.8N 025 17 37.1E	
FAF	54 31 41.5N 025 11 27.2E	BRG 020.75° / 7.41 NM VNO
MAPt	54 37 22.7N 025 16 52.1E	BRG 020.75° / 0.90 NM VNO
THR RWY 01	54 37 25.27N 025 16 42.70E	
Final approach descent angle: 3.00°		



INSTRUMENT
APPROACH
CHART - ICAO

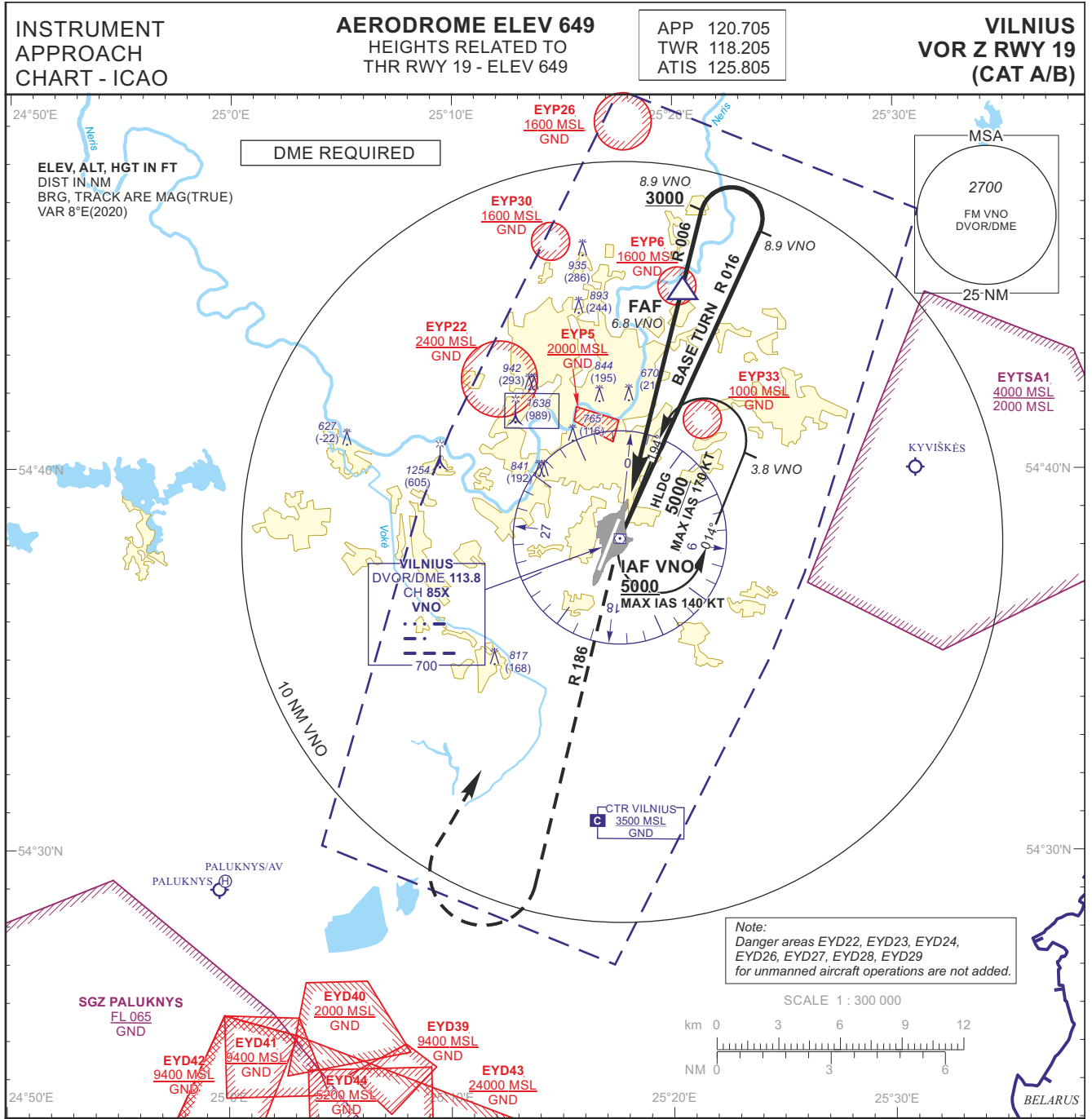
AERODROME ELEV 649
HEIGHTS RELATED TO
THR RWY 01 - ELEV 595

APP 120.705
TWR 118.205
ATIS 125.805

VILNIUS
VOR Y RWY 01
(CAT C/D)

TABULAR DESCRIPTION

VOR INSTRUMENT APPROACH from IAF(VNO)		
FIX/POINTS	COORDINATES	FIX FORMATION
VNO (IAF)	54 38 09.8N 025 17 37.1E	
FAF	54 31 41.5N 025 11 27.2E	BRG 020.75° / 7.41 NM VNO
MAPt	54 37 22.7N 025 16 52.1E	BRG 020.75° / 0.90 NM VNO
THR RWY 01	54 37 25.27N 025 16 42.70E	
Final approach descent angle: 3.00°		



MISSED APPROACH TRANSITION ALT 5000

Climb via VNO on R 186 to 3000, then turn right to VNO climbing to 5000. Climb with 3.6% or more until passing 3000 due to airspace restriction. When MACG 3.6% not possible, report ATC immediately.

THR ELEV 649

NM to/from THR RWY 19		NM to/from DME VNO														
				0	0.5	1	2	3	4	5	6	6.8	8.9	10	11	12
OCA(OCH)		A	B	DIST DME VNO		6	5	4	3	2						
STRAIGHT-IN APPROACH	VOR	1190 (540)		Altitude		2450	2130	1810	1500	1190						
				Height		(1801)	(1481)	(1161)	(851)	(541)						
CIRCLING		NOT AUTHORIZED		Timing not authorized for defining the MAPt												
				GS	Kts		80	100	120	140	160	180				
				FAF-MAPt 6.3 NM	min:sec		4:44	3:47	3:09	2:42	2:22	2:06				
				Rate of descent (5.2%)	ft/min		415	520	625	730	835	940				
For data tabulation see verso																

INSTRUMENT
APPROACH
CHART - ICAO

AERODROME ELEV 649
HEIGHTS RELATED TO
THR RWY 19 - ELEV 649

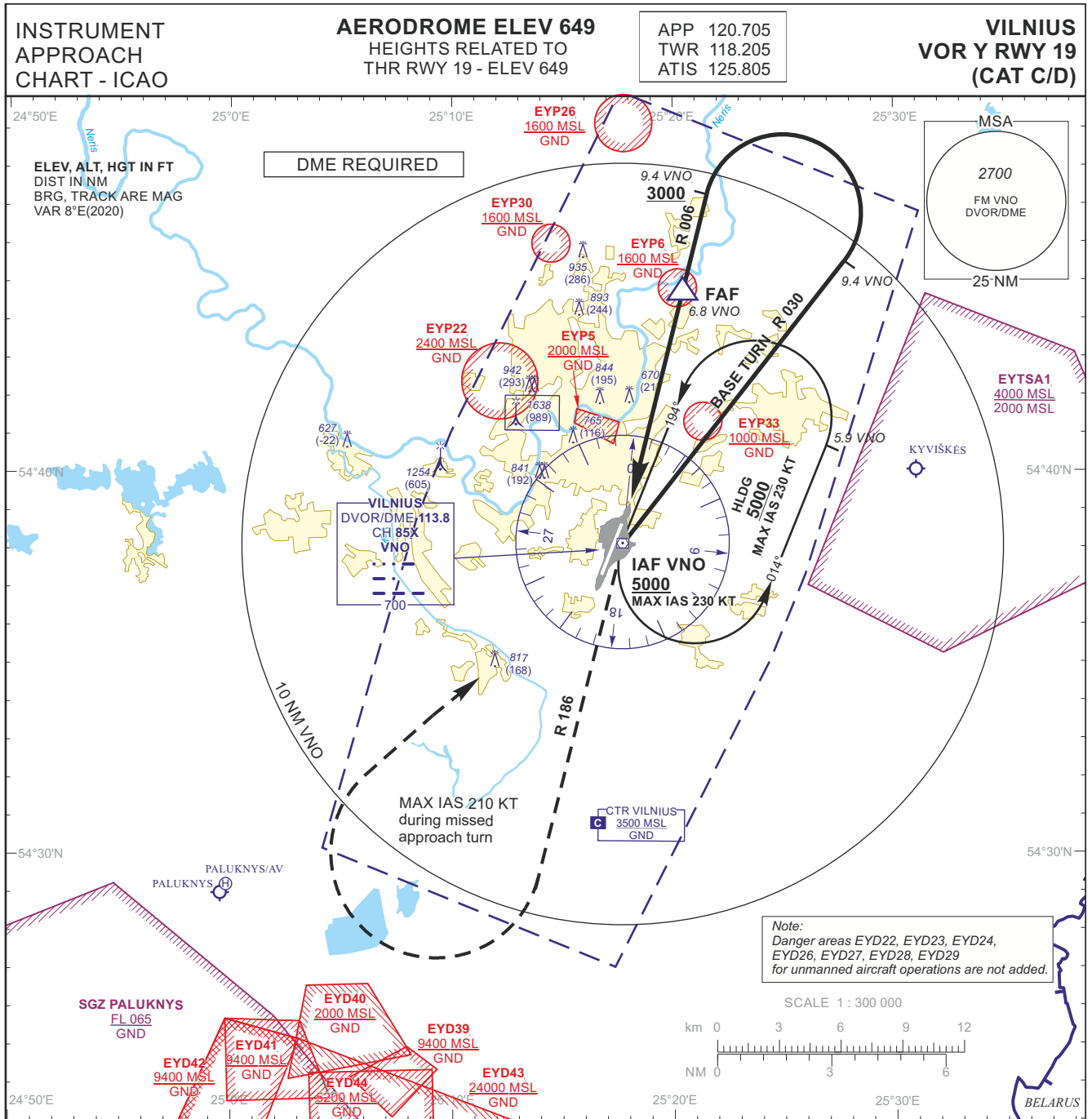
APP 120.705
TWR 118.205
ATIS 125.805

VILNIUS
VOR Z RWY 19
(CAT A/B)

TABULAR DESCRIPTION

VOR INSTRUMENT APPROACH from IAF(VNO)

FIX/POINTS	COORDINATES	FIX FORMATION
VNO (IAF)	54 38 09.8N 025 17 37.1E	
FAF	54 44 46.3N 025 20 28.0E	BRG 185.75° / 6.82 NM VNO
MAPt	54 38 38.1N 025 17 49.2E	BRG 185.75° / 0.49 NM VNO
THR RWY 19	54 38 40.73N 025 17 34.99E	
Final approach descent angle: 3.00°		

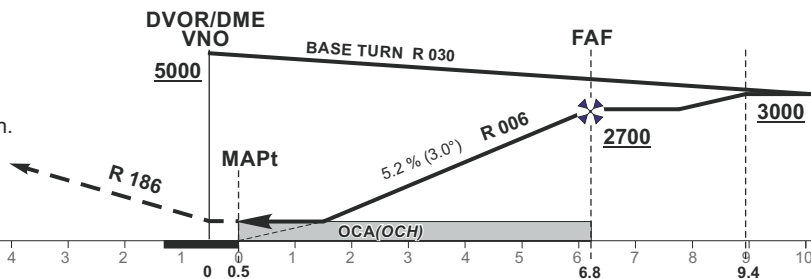


MISSED APPROACH

Climb via VNO on R 186 to 3000, then turn right (MAX IAS 210 KT) to VNO climbing to 5000.
Climb with 3.6% or more until passing 3000 due to airspace restriction.
When MACG 3.6% not possible, report ATC immediately.

THR ELEV 649

NM to/from THR RWY 19
NM to/from DME VNO



OCA(OCH)		C	D	DIST DME VNO	6	5	4	3	2		
STRAIGHT-IN APPROACH	VOR	1190 (540)		Altitude	2450	2130	1810	1500	1190		
				Height	(1801)	(1481)	(1161)	(851)	(541)		
CIRCLING		NOT AUTHORIZED		Timing not authorized for defining the MAPt							
				GS	Kts	80	100	120	140	160	180
				FAF-MAPt 6.3 NM	min:sec	4:44	3:47	3:09	2:42	2:22	2:06
				Rate of descent (5.2%)	ft/min	415	520	625	730	835	940
For data tabulation see verso											

INSTRUMENT
APPROACH
CHART - ICAO

AERODROME ELEV 649
HEIGHTS RELATED TO
THR RWY 19 - ELEV 649

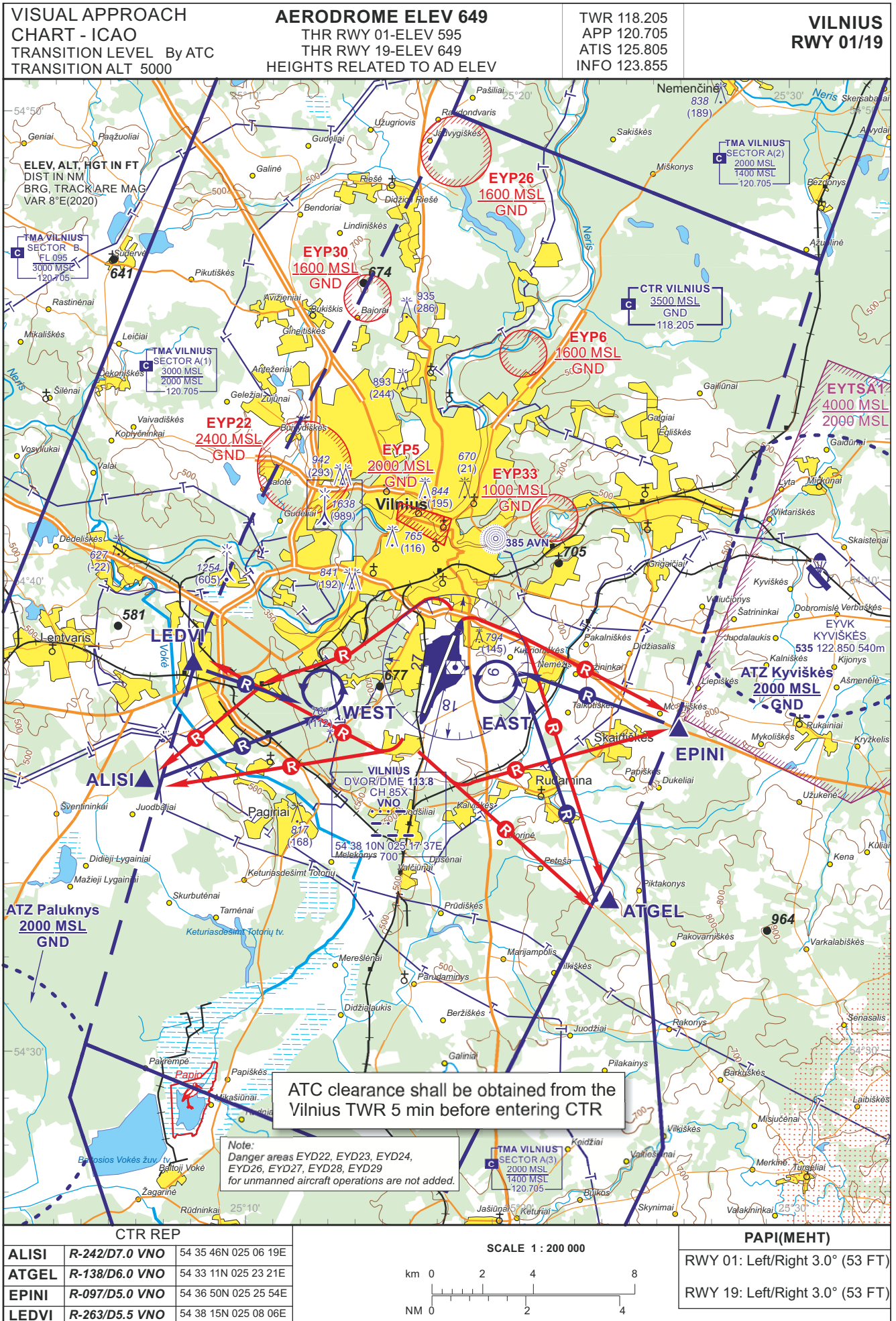
APP 120.705
TWR 118.205
ATIS 125.805

VILNIUS
VOR Y RWY 19
(CAT C/D)

TABULAR DESCRIPTION

VOR INSTRUMENT APPROACH from IAF(VNO)

FIX/POINTS	COORDINATES	FIX FORMATION
VNO (IAF)	54 38 09.8N 025 17 37.1E	
FAF	54 44 46.3N 025 20 28.0E	BRG 185.75° / 6.82 NM VNO
MAPt	54 38 38.1N 025 17 49.2E	BRG 185.75° / 0.49 NM VNO
THR RWY 19	54 38 40.73N 025 17 34.99E	
Final approach descent angle: 3.00°		



THIS PAGE INTENTIONALLY LEFT BLANK